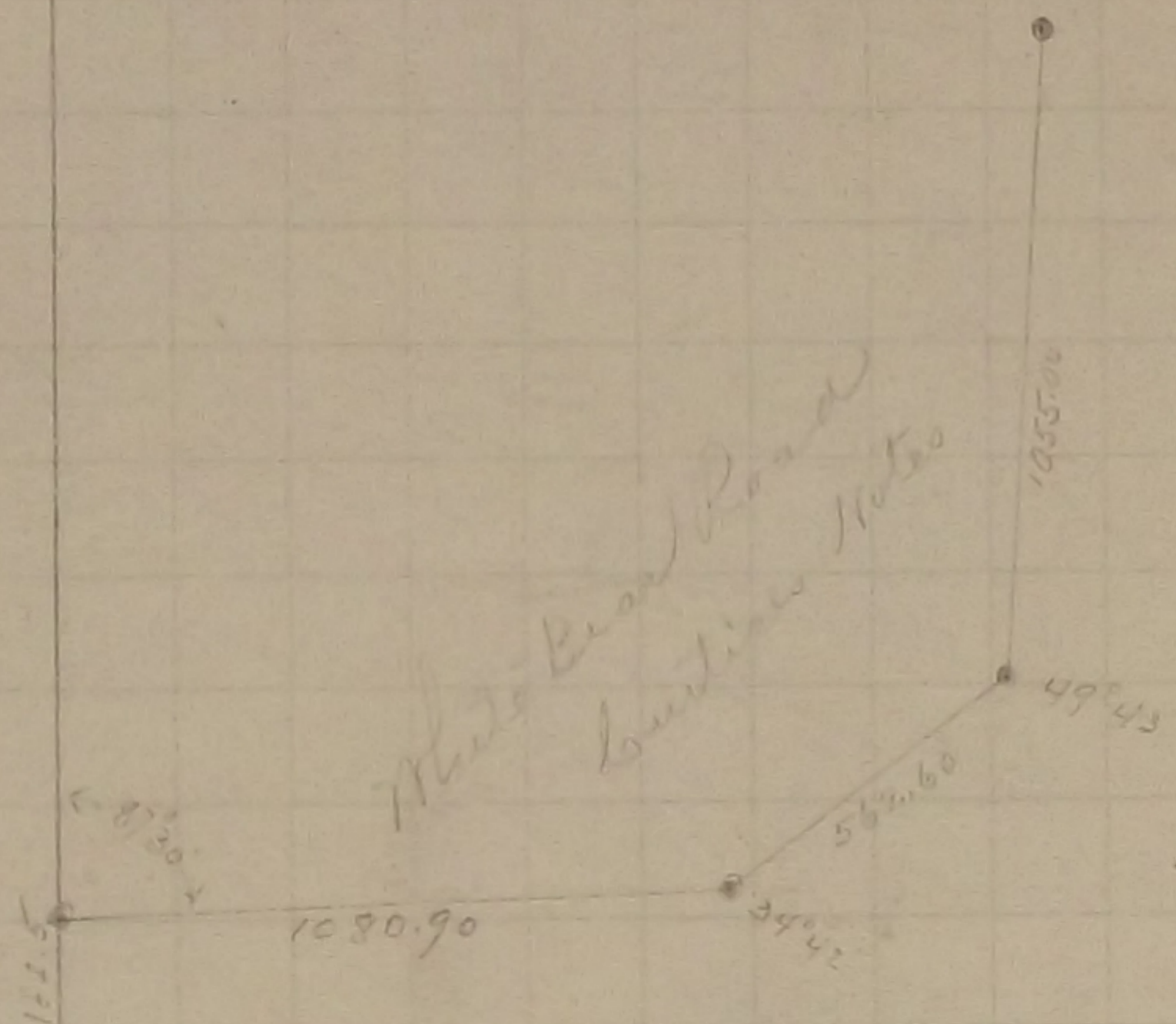






SEC 16





The South West corner of Section 16 Fixed by City Engineer Monument

The South East corner of Section 16 Fixed by City Engineer Monument

Meander corners fixed by City Engineer

The North West corner of Section 16 was fixed from some old notes Aug 1896  
Monument set

For  $\frac{1}{4}$  corner between Sections 15 and 16 Found Iron Monument at corner 1896

In Establishing the  $\frac{1}{4}$  corner between Sections 16 and 17 fixed from some old notes  
found stake Gov. trees gone Dec. 12 - 1898  
Set Mont. Nov. 1899

In Establishing the N.E. corner of Section 16 found old stake 4 ft under ground  
Government trees gone Set Mont. Nov. 1899

Found Monument at the  $\frac{1}{4}$  corner between Sections 9 and 16 Sept 1 - 1899  
Government witness trees gone

Fixed the center of Section by Intersection and set monument Oct 17 1900