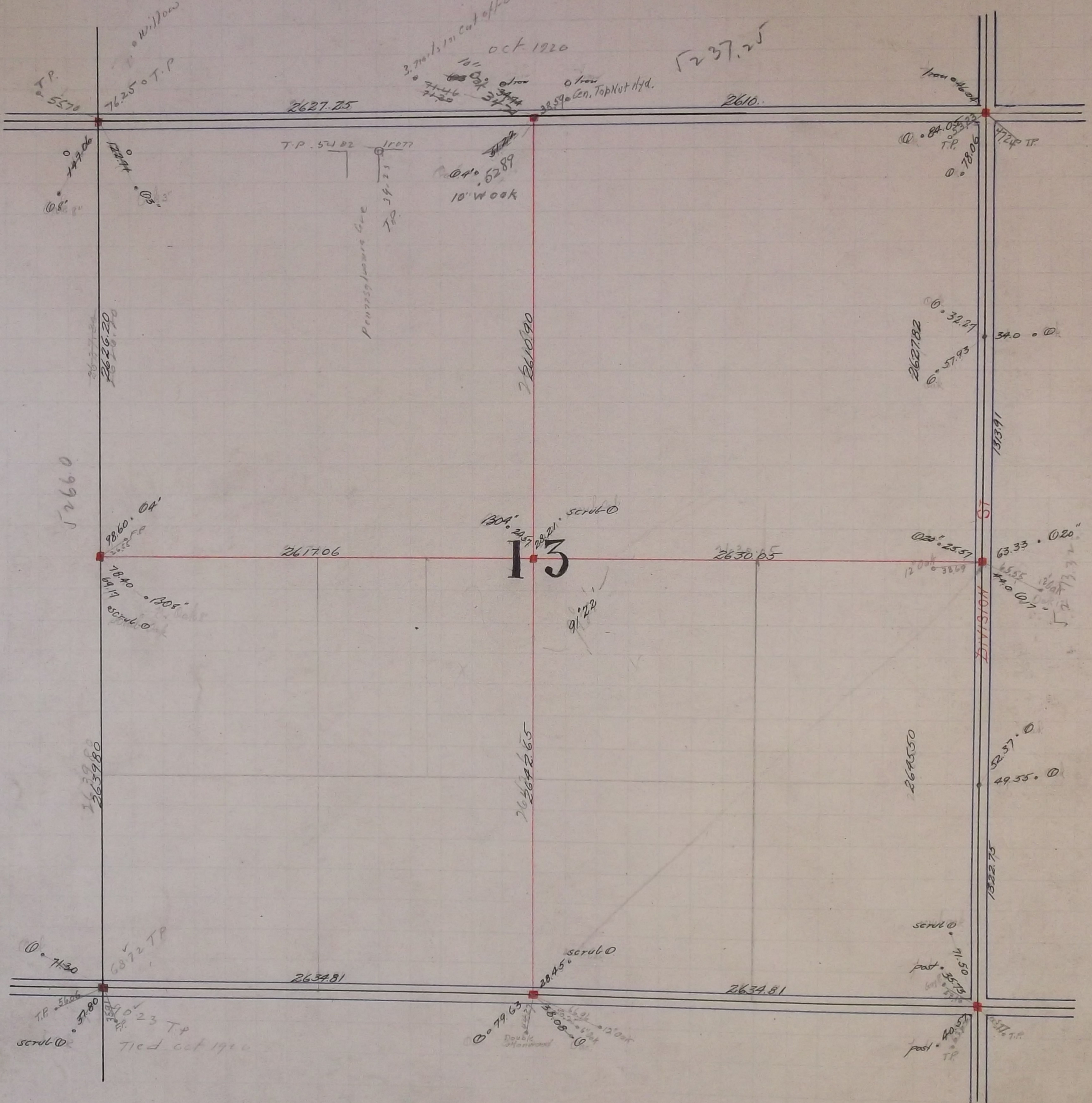


Oct-1920

3.7mils cut off limbs of oak tree
Oct-1920

237.25



T.P. 5570

76.25 T.P.

2627.25

2610.

Iron ed. oak

4700
08'

4700
08'

T.P. 5482 11077

04° 52' 89
10' W oak

Peninsularis etc

To 14.23

Gen. Top Nut Hyd.

08.03
T.P. 7806

4720 T.P.

2626.20

2610.90

2627.82
032.27
057.93

34.0

2660

98.60 04'

2617.06

1304' 2037' 2821' scrub 0

13

2630.05

020° 25' 57
1200' 3869

63.33 020"
44.0 017"
13.32
5.2

78.40
69.17 scrub 0
1308'

91' 22"

2639.80

2624.65

2645.50

52.37 0
49.55 0

07430

6872 T.P.

2634.81

2045' scrub 0

2634.81

scrub 0
11.50
35.50
10.50

T.P. 5666
37.80
scrub 0

7023 T.P.
Tied Oct 1920

07963
38.08
Double Standard

post 40.50
T.P.

269.62

The NE corner of Section 13 was fixed from stakes found in North St. Paul. Proper
and also found old stake at Section corner. Government witness trees gone
tid it and set monument Sept. 21 - 1897

The $\frac{1}{4}$ corner on E side of Section 13 on County line Found one Government witness tree
tid it and set Monument Sept 20 - 1897

The S.E. corner of Section 13 was fixed by prorating
tid it and set monument Sept 20 - 1897

The $\frac{1}{4}$ corner between Sections 13 and 24 was fixed Sept 17 - 1897 - set monument
Prorated and fixed $\frac{1}{4}$ corner halfway Government witness trees gone

The S.W. corner of Section 13 was fixed by City Engineer

In Establishing the N.W. corner of Section 13 found Iron stake at Section corner
Government trees gone

Set Mont. Nov. 1899

In Establishing the $\frac{1}{4}$ corner between Sections 12 and 13 found Iron stake at $\frac{1}{4}$ corner
Government trees gone

Set Mont. Nov. 1899

In Establishing the $\frac{1}{4}$ corner between Sections 13 and 14 found old stake at $\frac{1}{4}$ corner
which was fixed when Government trees were standing Fixed corner and set Mont.
Aug - 1900

Fixed the Centre of Section 13 by Intersection and set Mont. Aug 1900