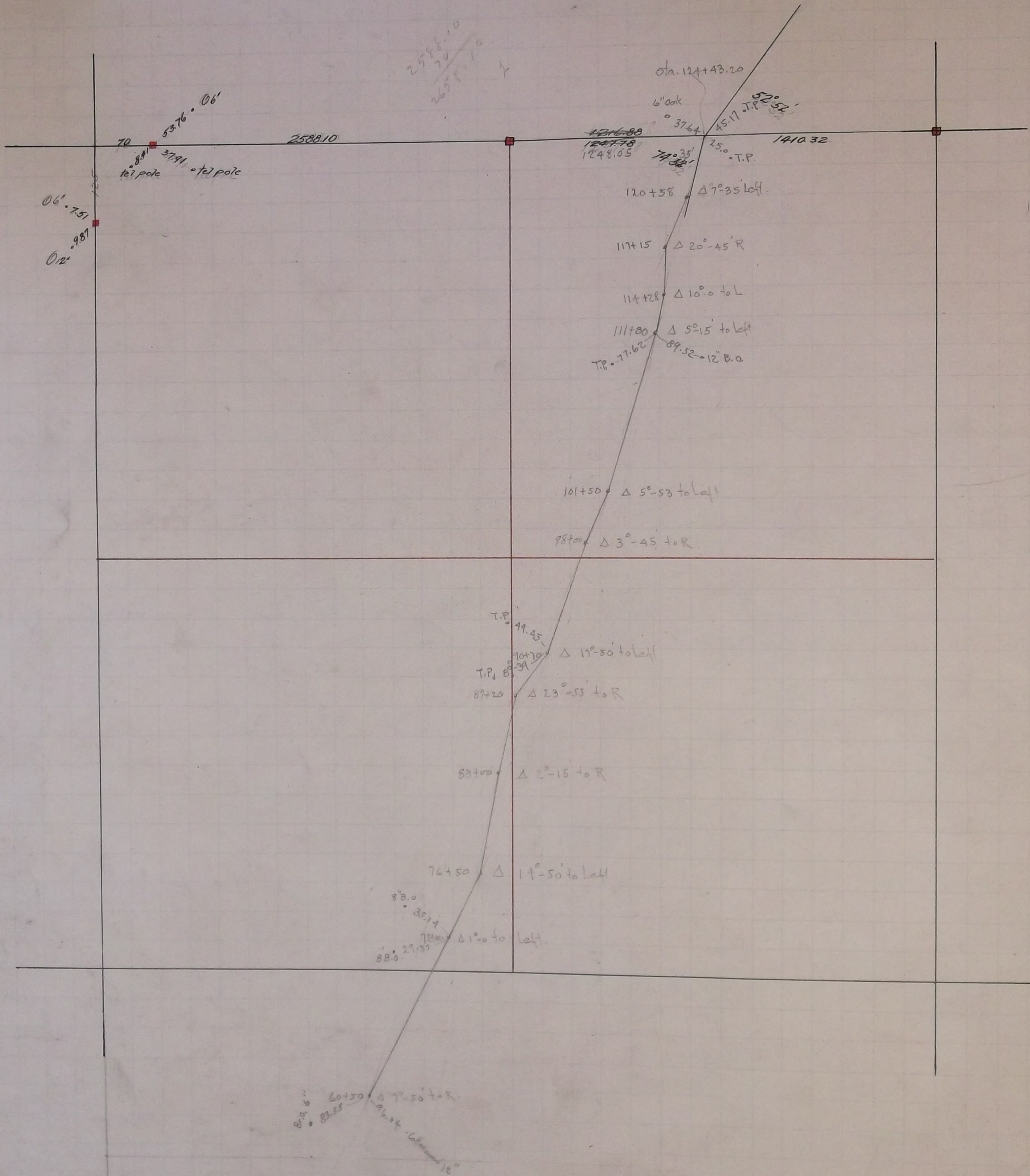


SEC 9



The $\frac{1}{4}$ corner between Section 8 and 9 was fixed in June 1891 Set Monument 1896

The South West corner of Section 9 was fixed from some old notes and Monument set in 1896

In Establishing the North East corner of Section 9 Found old ties
Government witness trees gone Set monument Aug 18 - 1898

In Establishing the $\frac{1}{4}$ corner between Section 4 and 9 found Boulder Monument
and Iron stake Government witness trees gone Set monument Aug 18 - 1898

In Establishing the $\frac{1}{4}$ corner between Sections 9 and 16 found Monument at corner.
July 1899

In Establishing the S.E. corner of Section 9 found old stake at Section corner
4ft underground Retied it and set mont. Nov. 1899

In Establishing the $\frac{1}{4}$ corner between Sections 9 and 10 Ran straight line from
corner to corner and fixed $\frac{1}{4}$ corner $\frac{1}{2}$ way Government ties gone
Set Mont. Nov. 1899

In Establishing the N.W. corner of Section 9 found one Government stump
corner in Lake Jan 13. 1899.

