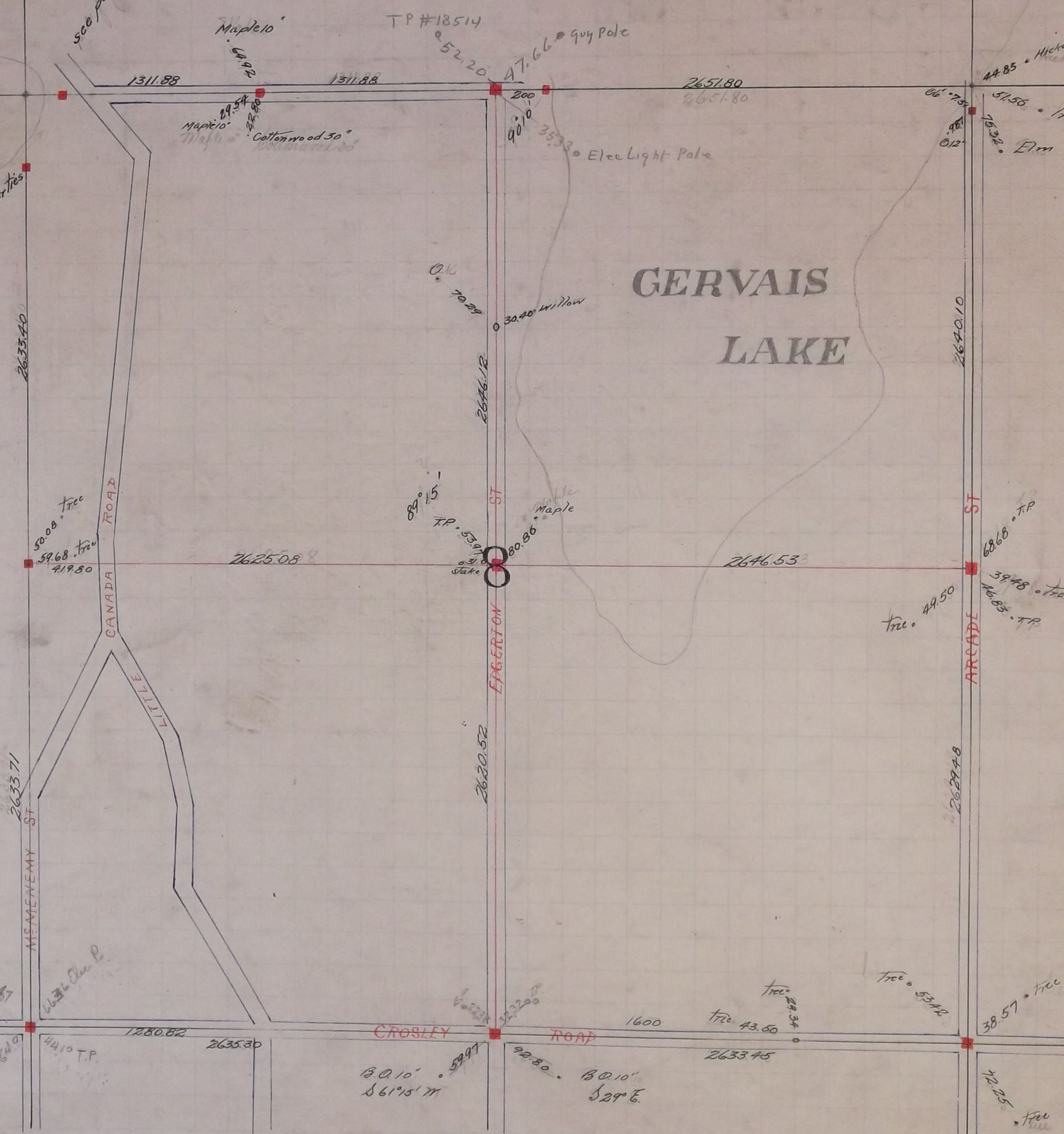


SAVAGE
LAKE

GERVAIS
LAKE

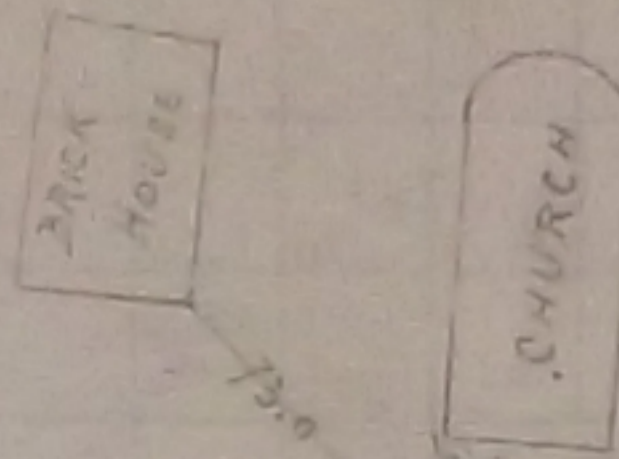
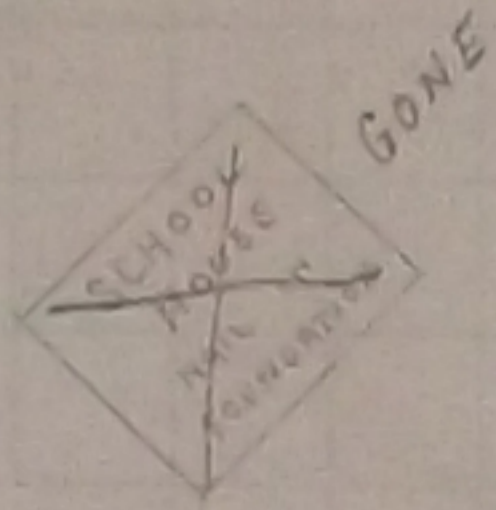
see page 35 for ties

see page 35 for ties



SEC 8

SAVAGE LAKE



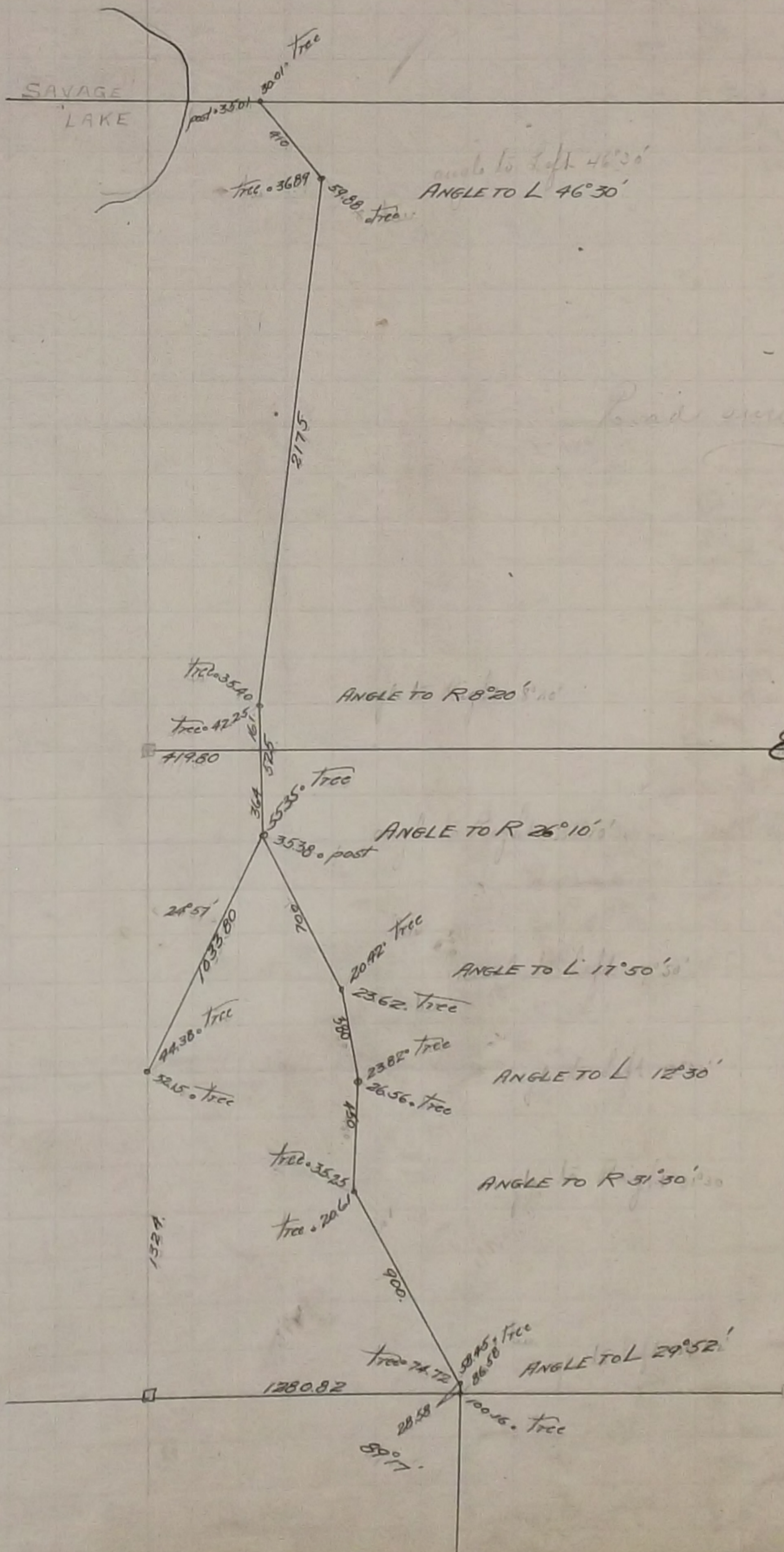
212.50

564.50

352.00

2060 feet 1/4 corner

lin. 52.91
lin. 70.92
lin. 50.43



Road survey through Sec 8

GEN 70 SEC 8

lin. 50.00
lin. 47.01
lin. 45.72

The $\frac{1}{4}$ corner between Sections 5 and 8 was fixed by running up from monument
at center of Section 8 and running East on Section line N side Section 8 using
sub'd stakes found and set Monument Found old Boulder Monument at this corner
June 1895

Made Survey of Road through Section 8 December 12 1896

The North West corner of Section 8 is in Savage Lake Dec 23 - 1896

For $\frac{1}{4}$ corner between Sections 7 and 8 was fixed by Gates A Johnson Jr in Nov 1885
and was retied 1896 found Government tree Set monument 1896

The $\frac{1}{4}$ corner between Section 8 and 9 was fixed in June 1891 Set Monument 1896

The South West corner of Section 8 was fixed in 1885 by Gates A Johnson Jr
when old Government witness tree was standing and Monument set 1895

The $\frac{1}{4}$ corner between Sections 8 and 17 was fixed in 1885 by G. A. J. Jr.
and Monument set Retied and reset monument Aug 1896

The South East corner of Section 8 was fixed from some old notes and
monument set in 1896

The N.E. corner of Section 8 was fixed from one Government witness stump
corner in Lake Jan 13 - 1899