

Telegraph T.P. 3022

Mont. Gona Drove Spike in Bridge

Tree 66.62
54.04 10' Oak

F.P. 2367.60
807
3594

Mont. East. Tank line Water Wks. Right of Way

Tank 23.63
4215 Tank
Inns 2 Jar. Stumps

2645.40

59.10 Tree
1035 Tree

Tree 85.94

1570.8

2890.80

2982 Elm tree

38.25
30 Cottonwood

MPLS ST. PAUL & S. STE M. RY.

T.P. 30.14
10" BE 40.3

1320

T.P. 45.00

44.17 T.P.

03 34.68

G

1320.82
2642.64

Tree
41.10
33.25
35.25
44.80 Tree

1320.82

stump 10.50

1315.95

2921.40

3042 Tree

F.P. 33

34.61 BEG
42.26 Tree

2630.20

2639 rough

F.P. 46.41

11.03 T.P.
39.71 T.P.

2422.27

FAIRCHILD

AVE 700.

Tree 64.12

Tree 42.46

Tree 48.94

2624.50

SAVAGE LAKE

Wood Lake

see page 27 for ties

T.P. 37.17

52.82 T.P.

T.P. 27.60

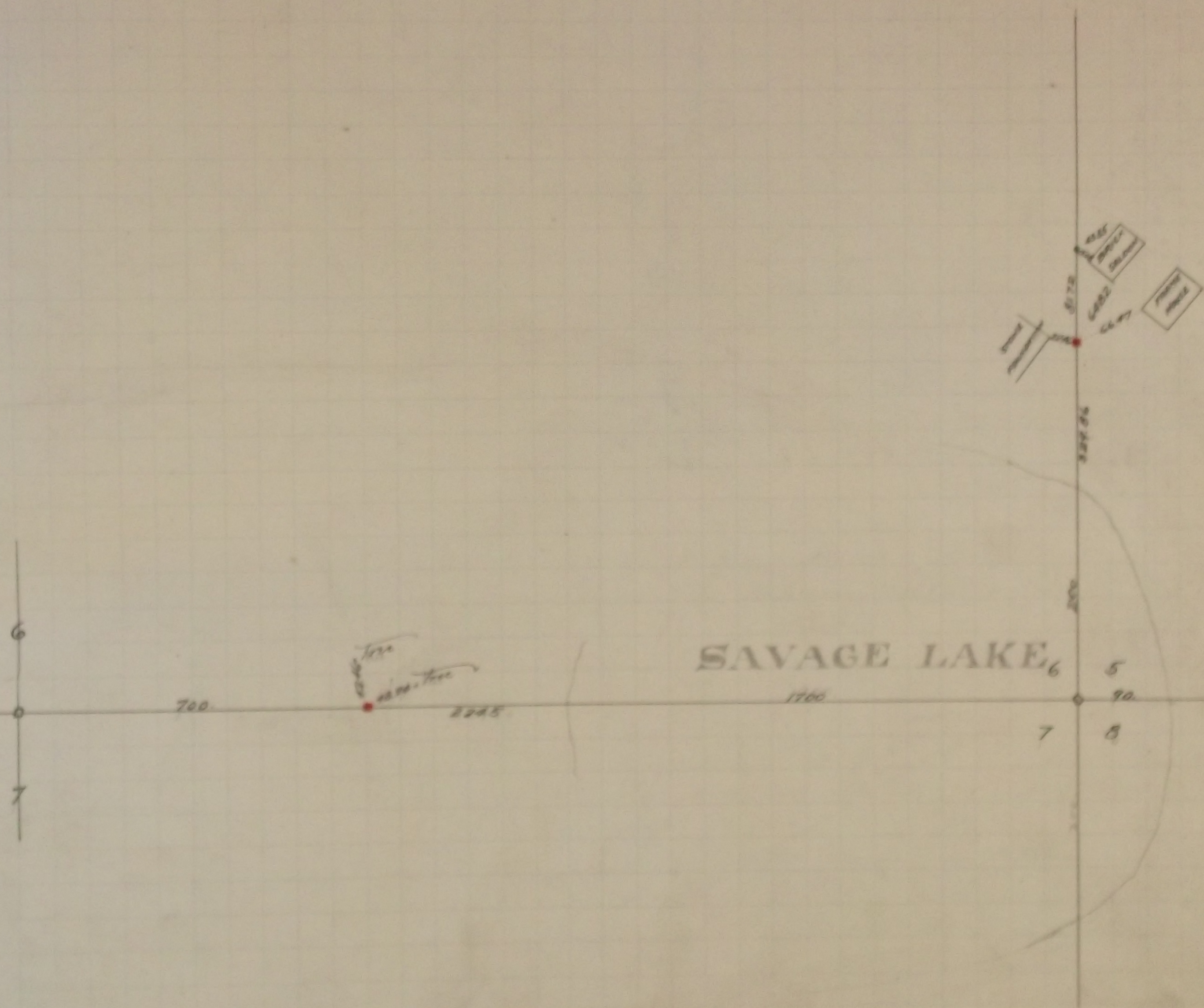
77.11

42.56 400.

24.00

53.23 21' 80.

SEC 6



Made Survey of Little Canada Road in Section 6 December 12 - 1896

The $\frac{1}{4}$ corner between Section 6 and 7 was fixed from stakes found in — — — — — Add.
Government witness trees gone Fixed corner tied it and set monument Dec 22 1896

The South East corner of Section 6 is in Savage Lake.

This corner was fixed December 23 - 1896

The $\frac{1}{4}$ corner between Sections 5 and 6 was fixed Dec 22 - 1896 found Iron stake at $\frac{1}{4}$ cor.
Government witness trees gone

The North West corner of Section 6 was fixed in June 1896 and set monument.

The North East corner of Section 6 was fixed in 1895 found old stake at Section cor.
which checked the lines of old fences. Government witness trees gone tied it
and set monument. 1896

The $\frac{1}{4}$ corner between Section 6 T 29 R 22 and Sec. 1 T 29 R 23 was fixed from line of
fences which checked about the Government distances from Section corner
Government witness trees gone Fixed corner tied it and set monument June - 1896

In Establishing the $\frac{1}{4}$ corner on the N of Section 6 Found Iron monument
and two Government witness stumps June 1st 1898
Set monument June 2nd - 1898

The Centre of Section 6 fixed by Intersection and tied June 2 - 1898
Set monument June 22 1898