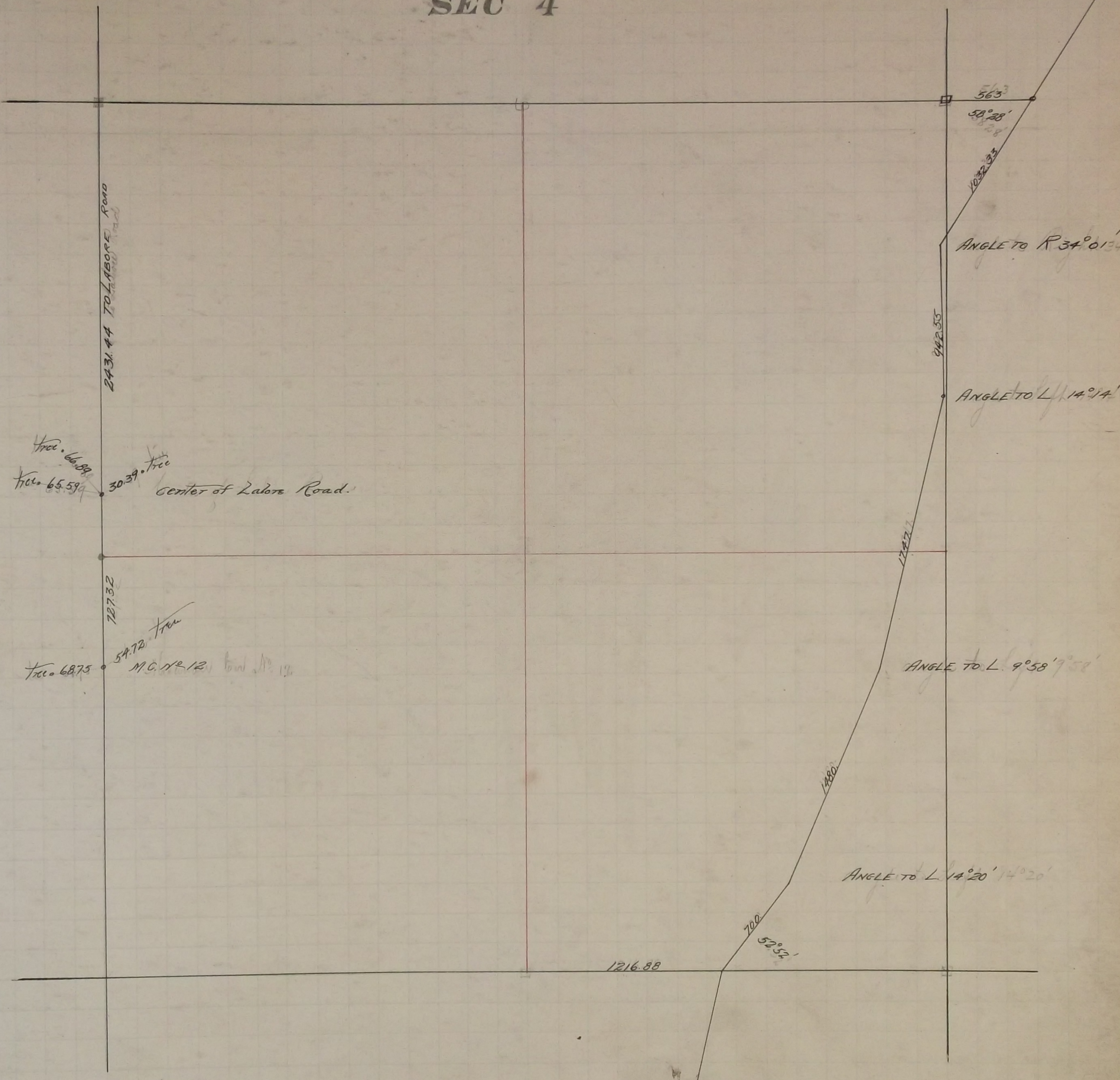






SEC 4



2431.44 TO LABOR ROAD

tree 66.89  
tree 65.59

30.39 tree

center of Labor Road

727.32

tree 68.75

54.72 tree

M.C. NR 12, 13

563  
58°28'

1032.33

ANGLE TO R 34°01'34"

942.55

ANGLE TO L 14°14'

1747.1

ANGLE TO L 9°58'7.50"

1480

ANGLE TO L 14°20'14.20"

700

52°54'

1216.88



Fixed  $\frac{1}{4}$  corner between Sections 4 and 5 June 30 - 1896  
Set monument June 22 - 1898

Fixed Meander corner No. 12 June 30 - 1896

The North West corner of Section 4 was fixed in 1895 found old stake which checked the line of old fences 1 Government witness stump tied it and set monument.

In Establishing the  $\frac{1}{4}$  corner on the North of Section 4 Found some old ties  
Government witness trees gone July 19 - 1898  
Set monument Aug 16 - 1898

In Establishing the North East corner of Section 4 Found some old ties  
Government witness trees gone July 18. 1898  
Set monument Aug 16 1898

In Establishing the South East corner of Section 4 Found old ties  
Government witness trees gone Set monument Aug 18 - 1898

In Establishing the  $\frac{1}{4}$  corner between Sections 4 and 9. Found Boulder  
monument and an iron stake Government witness trees gone  
Set monument Aug 18. 1898

In Establishing the S. W. corner of Section 4 found one Government stump and fixed  
corner in Lake Jan. 13 - 1899

In Establishing the  $\frac{1}{4}$  corner between Sections 3 and 4 Ran straight line from corner to corner  
and prorated fixed corner and set monument Nov. 1899

Fixed the centre of Section 4 by Intersection and set monument  
Oct. - 1900