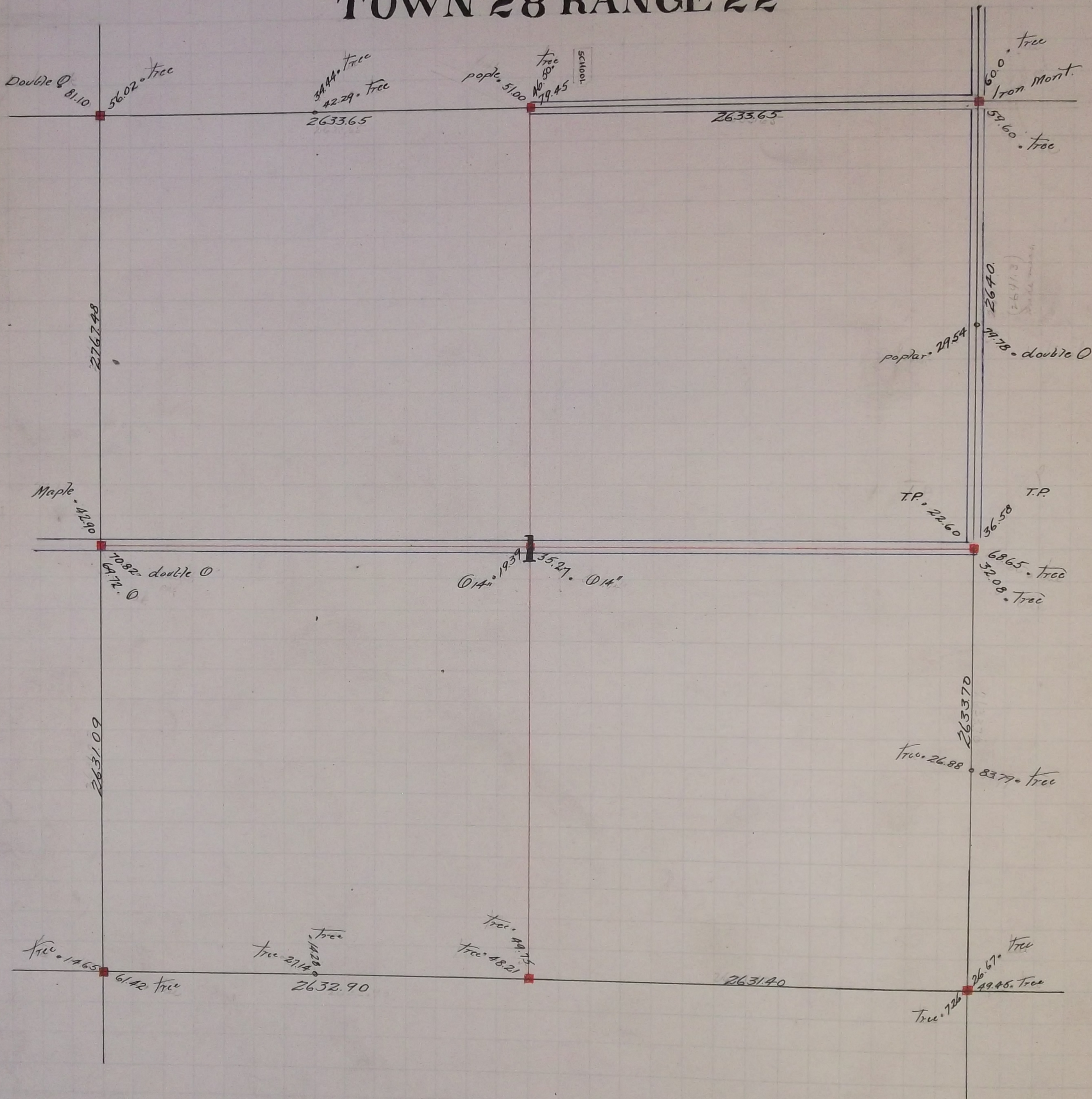


M^cLEAN

TOWN 28 RANGE 22



Section Corner North East Corner Section 1 Found Iron Monument set by State
Government witness trees gone tied it May 30 - 1896

Section Corner South East Corner Section 1 Found two Government witness trees
Fixed corner and tied it June 1 - 1896 set monument Aug 12 - 1897

In Establishing the $\frac{1}{4}$ corner between Sections 1 and 12 found old stake
Government witness trees gone. Fixed corner and tied it June 30 - 1897 - Set monument Aug 12 - 1897

Fixed the Centre of Section 1 by Intersection July 2 - 1897 set monument Aug 12 - 1897

In Establishing the $\frac{1}{4}$ corner between Sections 1 T²⁸ R²² and S. 36 T²⁹ R²²
found old stake Government witness trees gone June 24 - 1897
set monument Aug 12 - 1897

The $\frac{1}{4}$ corner on East side of Section 1 (on County line) set monument Aug 12 - 1897