

# MONUMENT 98N

## CERTIFICATE OF LOCATION OF GOVERNMENT CORNER

Witness Corner to Meander Corner No. 10 on the East line of Section 11, Township 30 North, Range 22 West, County of Ramsey, State of Minnesota.

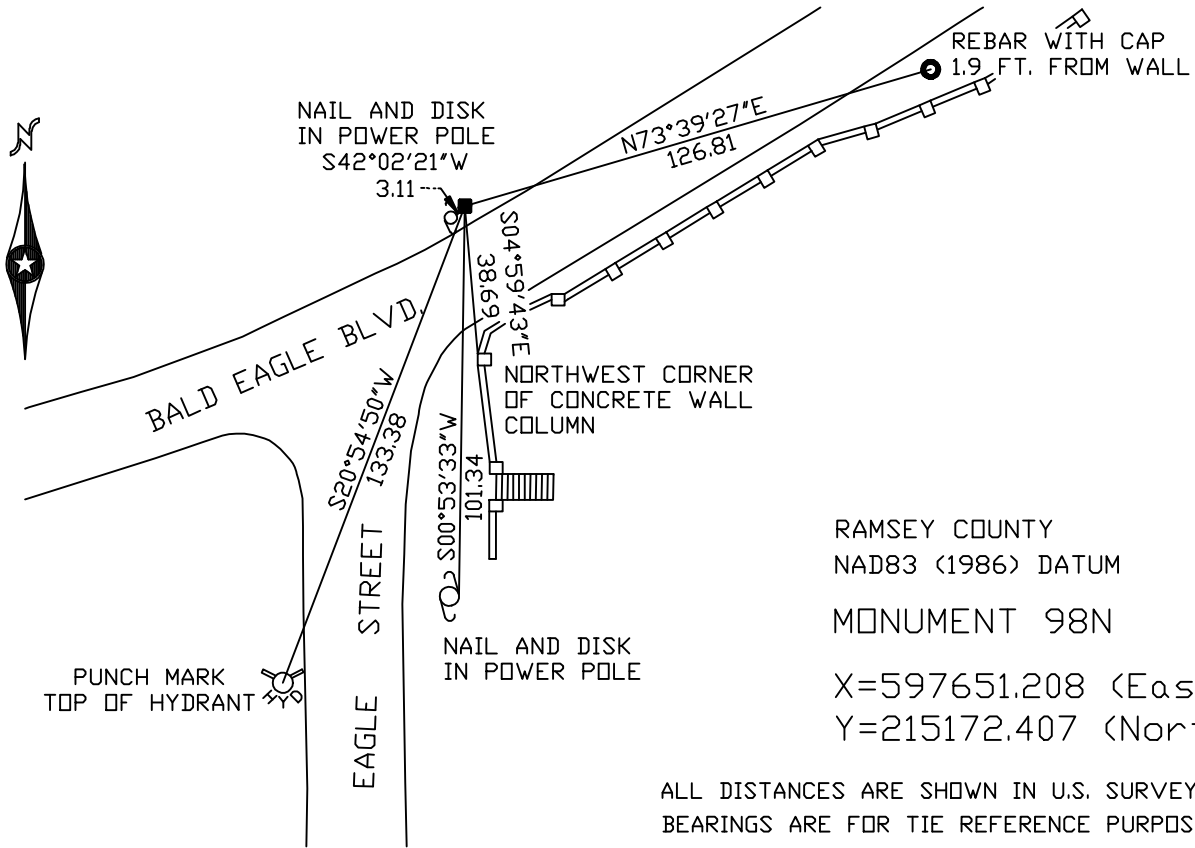
At the corner location shown on the sketch

On October 13, 2004 found a granite monument.

left monument as found,  lowered monument,  removed monument (explain)

On \_\_\_\_\_ placed a \_\_\_\_\_

### SKETCH OF REFERENCE TIES



Statements of evidence relative to this corner are on the following page(s).

I hereby certify that this document and the data contained herein was prepared by me or under my direct supervision this \_\_\_\_\_ day of \_\_\_\_\_, 20\_\_\_\_.

\_\_\_\_\_  
SIGNATURE

Minnesota License No. \_\_\_\_\_

Land Surveyor     Professional Engineer

County Surveyor     County Engineer

OFFICE OF COUNTY SURVEYOR  
County of Ramsey

I hereby certify that this document was filed in the County Surveyor's office on the \_\_\_\_\_ day of \_\_\_\_\_, 20\_\_\_\_.

David D. Claypool, P.L.S., County Surveyor

By \_\_\_\_\_, Deputy

## MONUMENT 98N

**Granite monument set 12 ft. south of original Meander Corner No. 10, November 10, 1901.**

**Old field book shows monument was moved a total of 50 feet south of Meander Corner No. 10, no date given.**

**Found granite monument down 0.1 ft., retied, July 16, 1974.**

**Granite monument down 0.2 ft., retied, December 4, 1992.**

**Granite monument down 0.2 ft., retied, December 7, 1999.**

**Set sign and post, December 8, 1999.**

**Retied monument, October 13, 2004.**