

# MONUMENT 96

## CERTIFICATE OF LOCATION OF GOVERNMENT CORNER

West Quarter Corner of Section 11, Township 30 North, Range 22 West, County of Ramsey, State of Minnesota.

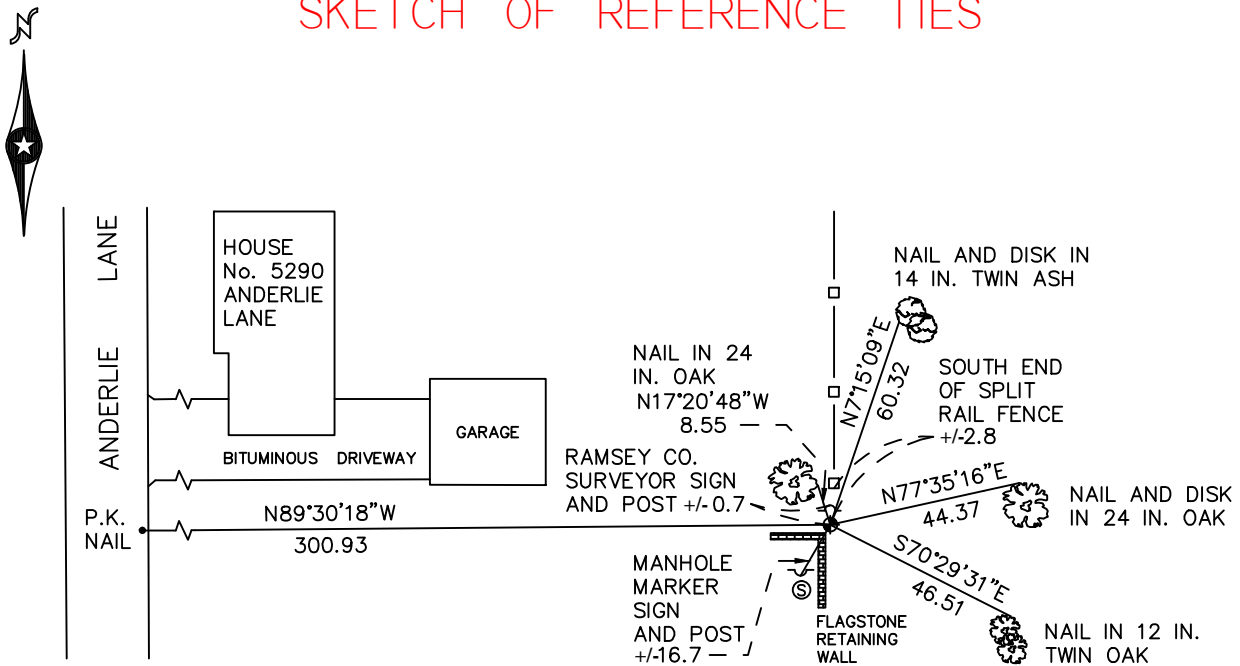
At the corner location shown on the sketch

On August 6, 2010 found a cast iron monument, down 0.4 feet.

left monument as found       raised/lowered monument       removed monument (explain)

On \_\_\_\_\_ placed a \_\_\_\_\_

### SKETCH OF REFERENCE TIES



RAMSEY COUNTY  
NAD83 (1986)

### MONUMENT 96

X= 592383.547 (Easting)  
Y= 213187.021 (Northing)

ALL DISTANCES ARE SHOWN IN U.S. SURVEY FEET.  
BEARINGS ARE FOR TIE REFERENCE PURPOSES ONLY.

Statements of evidence relative to this corner are on the following page.

I hereby certify that this document has been prepared by me or under my direct supervision this \_\_\_\_\_ day of \_\_\_\_\_, 20\_\_\_\_.

\_\_\_\_\_  
SIGNATURE

Minnesota License No. \_\_\_\_\_

- County Surveyor       Land Surveyor  
 Deputy County Surveyor

OFFICE OF COUNTY SURVEYOR  
County of Ramsey

I hereby certify that this document was filed in the County Surveyor's office this \_\_\_\_\_ day of \_\_\_\_\_, 20\_\_\_\_.

\_\_\_\_\_  
SIGNATURE  
Craig W. Hinzman, L.S.  
Ramsey County Surveyor

Found 1/2 in. inside diameter iron pipe placed by La Vayne Dupslaff (M.W. Carley).  
Replaced with a cast iron monument, May 15, 1974.

Cast iron monument at corner of wall, tied, December 4, 1992.

Retied monument, October 4, 1999.

Corner of flagstone wall is over monument. Set sign and post 8 in. north of  
monument, October 22, 1999.

Retied monument, October 26, 2004.

Retied monument, August 6, 2010.