

MONUMENT 94N

CERTIFICATE OF LOCATION OF GOVERNMENT CORNER

Witness Monument North of the East Quarter Corner of Section 9, Township 30 North, Range 22 West, County of Ramsey, State of Minnesota.

At the corner location shown on the sketch

On May 19, 2011 found a granite monument, with drill hole, up 0.6 ft.

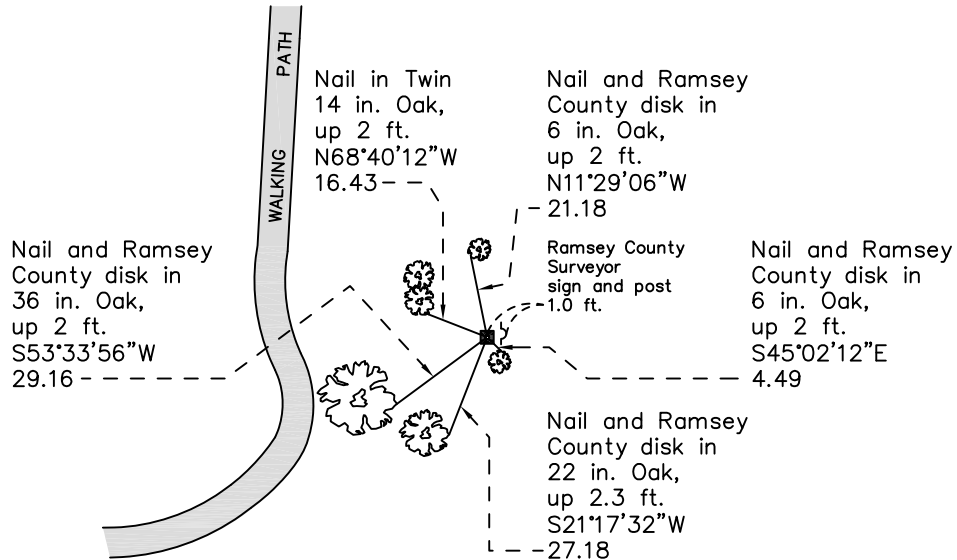
left monument as found raised/lowered monument removed monument (explain)

On _____ placed a _____

SKETCH OF REFERENCE TIES



BALD EAGLE-OTTER LAKES
REGIONAL PARK



RAMSEY COUNTY
NAD83 (1986)

MONUMENT 94N

Formerly known as 119NN

X= 587099.458 (Easting)
Y= 213828.061 (Northing)

ALL DISTANCES ARE SHOWN IN U.S. SURVEY FEET.
BEARINGS ARE FOR TIE REFERENCE PURPOSES ONLY.

Statements of evidence relative to this corner are on the following page.

I hereby certify that this document was prepared by me or under my direct supervision and that I am a duly Licensed Land Surveyor under the laws of the State of Minnesota.

Daniel D. Baar Date _____
Minnesota License No. 45816

County Surveyor
 Deputy County Surveyor Land Surveyor

OFFICE OF COUNTY SURVEYOR
County of Ramsey

I hereby certify that this document was filed in the County Surveyor's office this _____ day of _____, 20 ____.

Craig W. Hinzman, L.S.
Ramsey County Surveyor

MONUMENT 94N

In establishing the 1/4 Corner between Sections 9 and 10. Ran straight line from Corner to Corner and fixed 1/4 Corner half way; no Government trees, February 13, 1902.

Set monument 658.63 North, January, 1903.

Found a granite monument, up 0.4 ft., by Frank Kvidera (survey for the County Highway Department). Tied, September 24, 1973.

Set a sign and post; tied, December 6, 1999.

Retied a granite monument with drill hole, up 0.6 ft., May 19, 2011.