

# MONUMENT 93

## CERTIFICATE OF LOCATION OF FOUND MONUMENT

Center of Section 9, Township 30 North, Range 22 West, County of Ramsey, State of Minnesota.

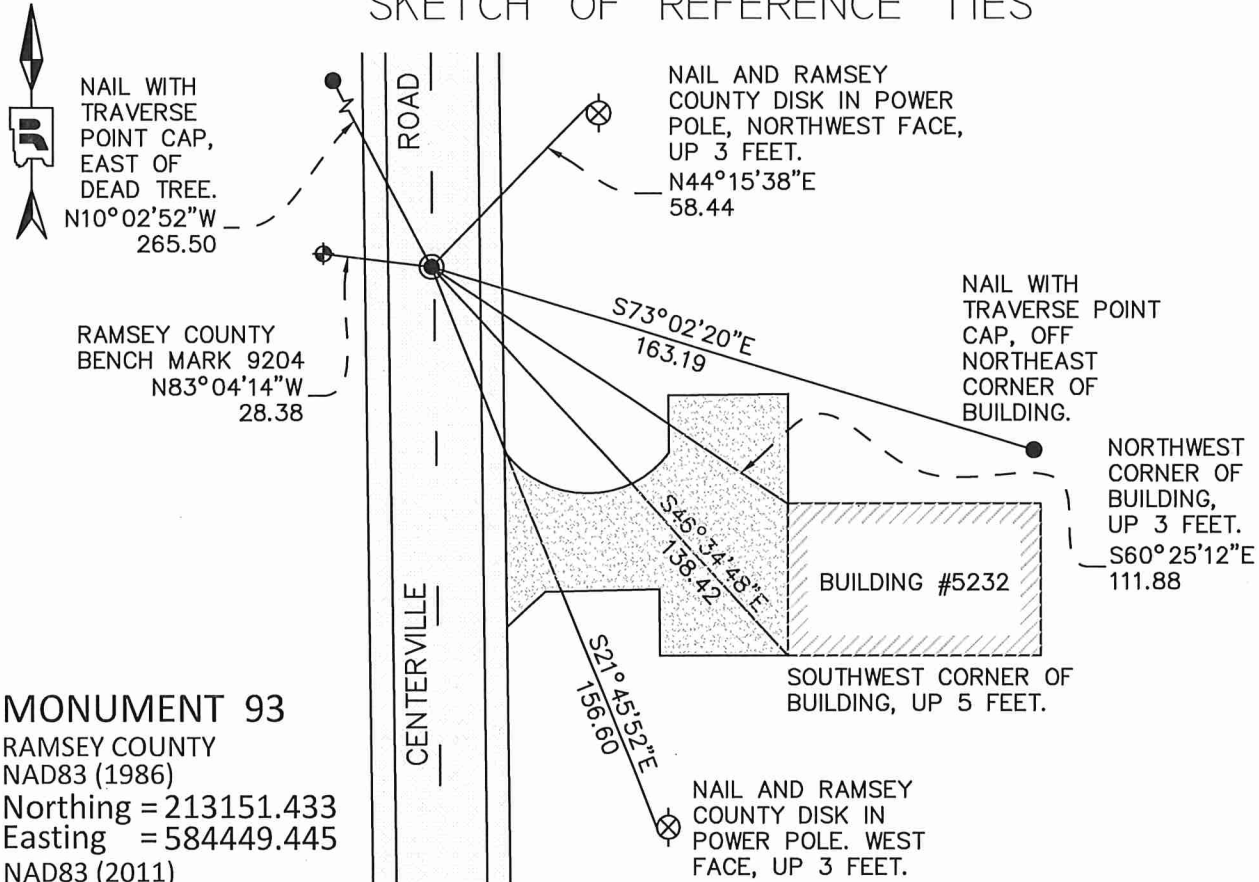
At the corner location shown on the sketch

On \_\_\_\_\_ found \_\_\_\_\_

left monument as found       raised/lowered monument       removed monument (explain)

On August 24, 2017 placed a 20 inch "Ramsey County" cast iron monument within a manhole  
assembly using construction offsets.

### SKETCH OF REFERENCE TIES



**MONUMENT 93**  
 RAMSEY COUNTY  
 NAD83 (1986)  
 Northing = 213151.433  
 Easting = 584449.445  
 NAD83 (2011)  
 Northing = 213152.170  
 Easting = 584448.834

ALL DISTANCES ARE SHOWN IN U.S. SURVEY FEET.  
 BEARINGS ARE FOR TIE REFERENCE PURPOSES ONLY.

Statements of evidence relative to this corner are on the following page.

I hereby certify that this survey, plan, or report was prepared by me or under my direct supervision, that I am a duly Licensed Land Surveyor under the laws of the state of Minnesota, and that this certificate is correct and complete to the best of my knowledge and belief.

Daniel D. Baar      9-30-21  
 Daniel D. Baar      Date  
 Ramsey County Surveyor  
 Minnesota License No. 45816

OFFICE OF COUNTY SURVEYOR  
 County of Ramsey

I hereby certify that this document was filed in the County Surveyor's office this 30<sup>th</sup> day of September, 20 21.

Daniel D. Baar  
 Daniel D. Baar, L.S.  
 Ramsey County Surveyor

# MONUMENT 93

Center of Section 9, Township 30 North, Range 22 West

January 29, 1910	The 1/4 Corner center of Section 9 was fixed by running the North and South 1/4 lines and the East and West 1/4 lines. Retied it. Ramsey County Re-Monumentation Survey
October, 1939	Checked cast iron monument. Ramsey County Engineer's Office
February, 1946	Checked cast iron monument. Ramsey County Engineer's Office
April, 1965	Checked cast iron monument. Ramsey County Engineer's Office
May 23, 1974	Found a cast iron monument, down 0.1 feet. Ramsey County Surveyor's Office
July 2, 1974	Retied monument. Ramsey County Surveyor's Office
May, 1989	Removed monument for construction. Ramsey County Surveyor's Office
November 24, 1992	Reset 20 inch cast iron monument. Ramsey County Surveyor's Office
January 24, 1993	Retied monument. Ramsey County Surveyor's Office
November 15, 1999	Retied monument. Ramsey County Surveyor's Office
October 5, 2004	Retied monument. Ramsey County Surveyor's Office
October 14, 2009	Found a cast iron monument, down 0.1 feet. Retied monument. Ramsey County Surveyor's Office
May 22, 2014	Found a cast iron monument, down 0.2 feet. Checked ties using certificate of location dated October 14, 2009. All ties present and in good condition except could not locate a nail and disk in 12 inch cottonwood bearing S44-04-16W at 113.56 feet. Ramsey County Surveyor's Office
May 9, 2016	Found a cast iron monument, down 0.2 feet. Ran static GPS observation to obtain NAD 83 (2011) coordinates. Ramsey County Surveyor's Office
May 8, 2017	Found a cast iron monument, down 0.2 feet. Set monument offsets prior to removal due to road construction. Ramsey County Surveyor's Office
Summer, 2017	Monument removed by contractor due to road construction. Exact date unknown. Ramsey County Surveyor's Office
August 24, 2017	Set a 20 inch "Ramsey County" cast iron monument within a cast iron manhole assembly. Tied out monument. Ramsey County Surveyor's Office
September 9, 2020	Check monument and ties; all in and in good condition. Ramsey County Surveyor's Office