

MONUMENT 9SC

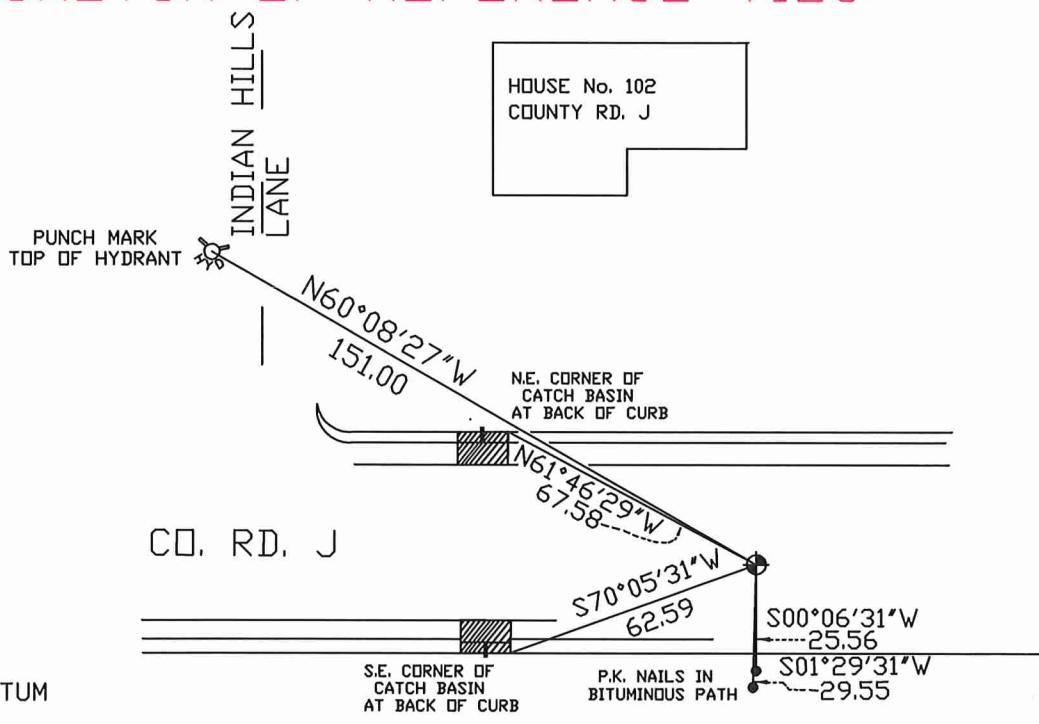
CERTIFICATE OF LOCATION OF GOVERNMENT CORNER

Northwest Corner of Section 2, Township 30 North, Range 23 West,
County of Ramsey, State of Minnesota.

At the corner location shown on the sketch

- On November 21, 2006 found cast iron monument marked "3RD CORRECTION LINE", flush, (2639.79 ft. east of monument 8SC).
- left monument as found, lowered monument, removed monument (explain)
- On _____ placed a _____

SKETCH OF REFERENCE TIES



RAMSEY COUNTY
NAD83 (1986) DATUM

MONUMENT 9SC

X=560770.355 (Easting)
Y=221542.251 (Northing)

'Closing Corner' is 5.62 ft. north.

ALL DISTANCES ARE SHOWN IN U.S. SURVEY FEET.
BEARINGS ARE FOR TIE REFERENCE PURPOSES ONLY.

Statements of evidence relative to this corner are on the following page(s).

I hereby certify that this document and the data contained herein was prepared by me or under my direct supervision this 22nd day of February, 2007.

David D. Claypool
SIGNATURE

Minnesota License No. 13298

- Land Surveyor Professional Engineer
 County Surveyor County Engineer

OFFICE OF COUNTY SURVEYOR

County of Ramsey

I hereby certify that this document was filed in the County Surveyor's office on the 22nd day of February, 2007.

David D. Claypool, P.L.S., County Surveyor

By David D. Claypool, Deputy

MONUMENT 9SC

Found granite monument, flush; retied, October 25, 1974.

Tied out cast iron monument, for construction removal, May 21, 1992.

Relocated position, August 30, 1993.

Retied monument location, September 1, 1993.

Placed a 20 in. cast iron monument, September 8, 1993.

Placed "Set 45" concrete around monument, October 10, 1993.

Set a 20 in. cast iron standard corner (SC) monument, marked "3RD CORRECTION LINE", 5.62 ft. south of "Closing Corner" (original granite monument location), October 21, 1995.

Tied monument 9SC, December 14, 1998.

Tied monument 9SC, June 15, 2004.

Tied monument 9SC, November 21, 2006.