

# MONUMENT 82

## CERTIFICATE OF LOCATION OF GOVERNMENT CORNER

East Quarter Corner of Section 9, Township 30 North, Range 23 West, County of Ramsey, State of Minnesota.

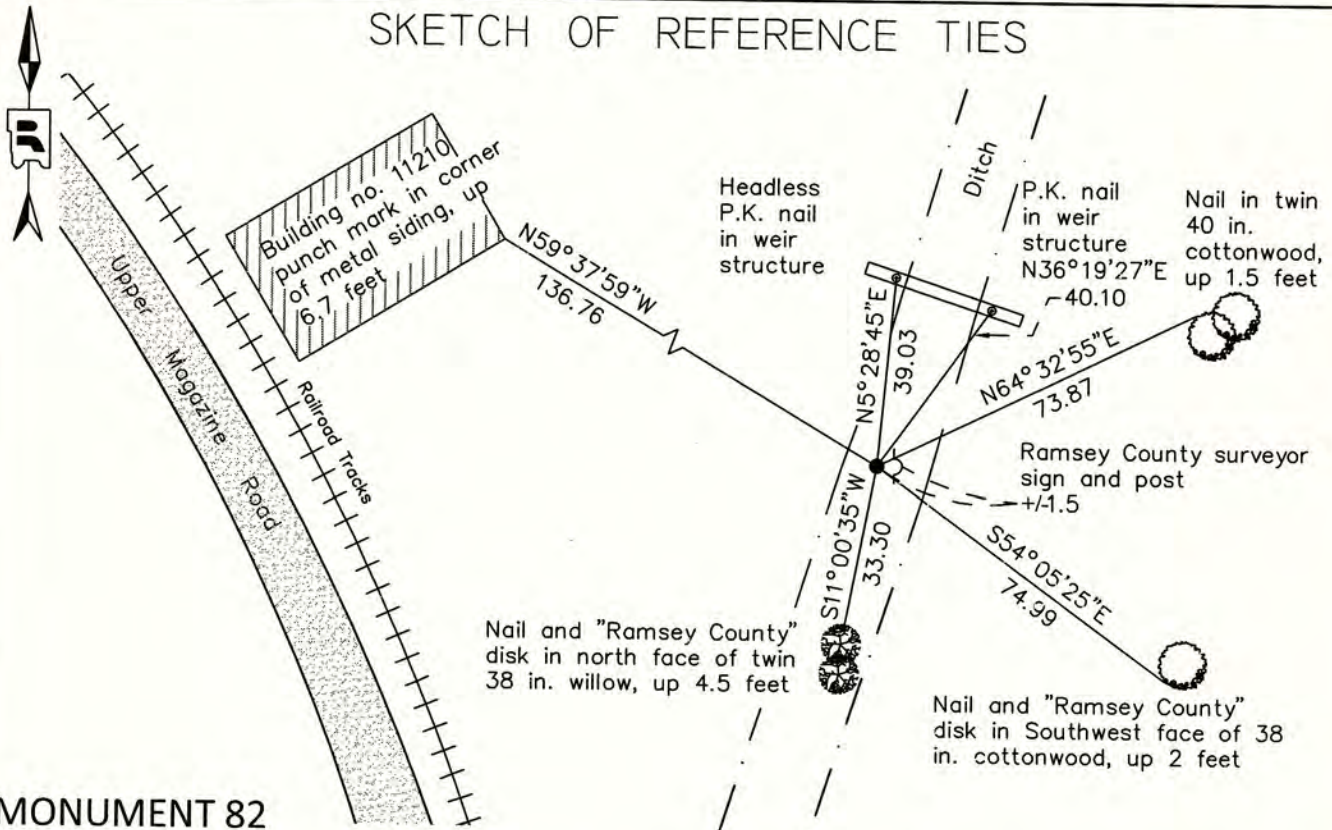
At the corner location shown on the sketch

On June 17, 2014 found a 3.5 inch diameter galvanized metal pipe, up 2.8 feet, leaning +/-0.3 ft. southerly. Coordinates established on top of monument (see corner history).

left monument as found       raised/lowered monument       removed monument (explain)

On \_\_\_\_\_ placed a \_\_\_\_\_

### SKETCH OF REFERENCE TIES



### MONUMENT 82

RAMSEY COUNTY

NAD83 (1986)

X= 555597.795 (Easting)  
Y= 212979.118 (Northing)

NAD83 (1996)

X= 555597.419 (Easting)  
Y= 212979.773 (Northing)

ALL DISTANCES ARE SHOWN IN U.S. SURVEY FEET. BEARINGS ARE FOR TIE REFERENCE PURPOSES ONLY.

Statements of evidence relative to this corner are on the following page.

I hereby certify that this survey, plan, or report was prepared by me or under my direct supervision, that I am a duly Licensed Land Surveyor under the laws of the state of Minnesota, and that this certificate is correct and complete to the best of my knowledge and belief.

Daniel D. Baar      6-3-15  
 Daniel D. Baar      Date  
 Deputy County Surveyor  
 Minnesota License No. 45816

OFFICE OF COUNTY SURVEYOR  
 County of Ramsey

I hereby certify that this document was filed in the County Surveyor's office this 3rd day of June, 20 15.

Daniel D. Baar  
 Daniel D. Baar  
 Deputy Ramsey County Surveyor



# MONUMENT 82

East Quarter Corner of Section 9, Township 30 North, Range 23 West

- |                   |  |
|-------------------|--|
| December 16, 1847 | Set Quarter post between Sections 9 and 10<br>(Bur Oak 12 S67E 1.28; White Oak 13 N58E 1.53)<br>Isaac Higbee, Deputy Surveyor  |
| June 11, 1898     | In Establishing the 1/4 Corner between Sections 9 and 10, Ran straight line from corner to corner and fixed 1/4 Corner 1/2 way. Government witness trees gone. Ramsey County Re-monumentation Survey   |
| July 16, 1942     | The United States of America acquired 2,425 acres, more or less, for an ammunition plant per document number A04501182. The East Quarter Corner of Section 9 is located within the acquisition area.   |
| July, 1961        | Twin Cities Arsenal Reservation Map dated January 20, 1942, last revised July 27, 1973 states "Re-established position and set new iron corner," at the East Quarter Corner of Section 9.  |
| August 8, 1991    | Found a 4 in. iron pipe in concrete base, up +/-3 ft. in ditch; tied pipe out. Ramsey County Surveyor's Office   |
| August 26, 1991   | Placed a Ramsey County "Survey Marker" sign and post +/-2 ft. east. Ramsey County Surveyor's Office  |
| April 6, 2001     | Retied monument (4 in. pipe leaning southerly).<br>Ramsey County Surveyor's Office   |
| March 9, 2005     | Retied monument. Ramsey County Surveyor's Office   |
| November 3, 2010  | Retied monument. Ramsey County Surveyor's Office   |
| June 17, 2014     | Checked 4 inch iron pipe monument, leaning 0.3 ft. southerly. Established NAD83 (1996 Adjusted) coordinates on the top of the cast iron monument. Top of monument has historically been used for the published position of the monument. Work was performed as part of a County Surveyor's Office survey project in Sections 9 and 16 in support of the redevelopment of former TCAAP property. Coordinates established utilizing historic traverse data, complimenting current traverse data and GPS measurements, all analyzed and adjusted by least squares. Ramsey County Surveyor's Office. |