

MONUMENT 78

CERTIFICATE OF LOCATION OF GOVERNMENT CORNER

East Quarter Corner of Section 7, Township 30 North, Range 23 West, County of Ramsey, State of Minnesota.

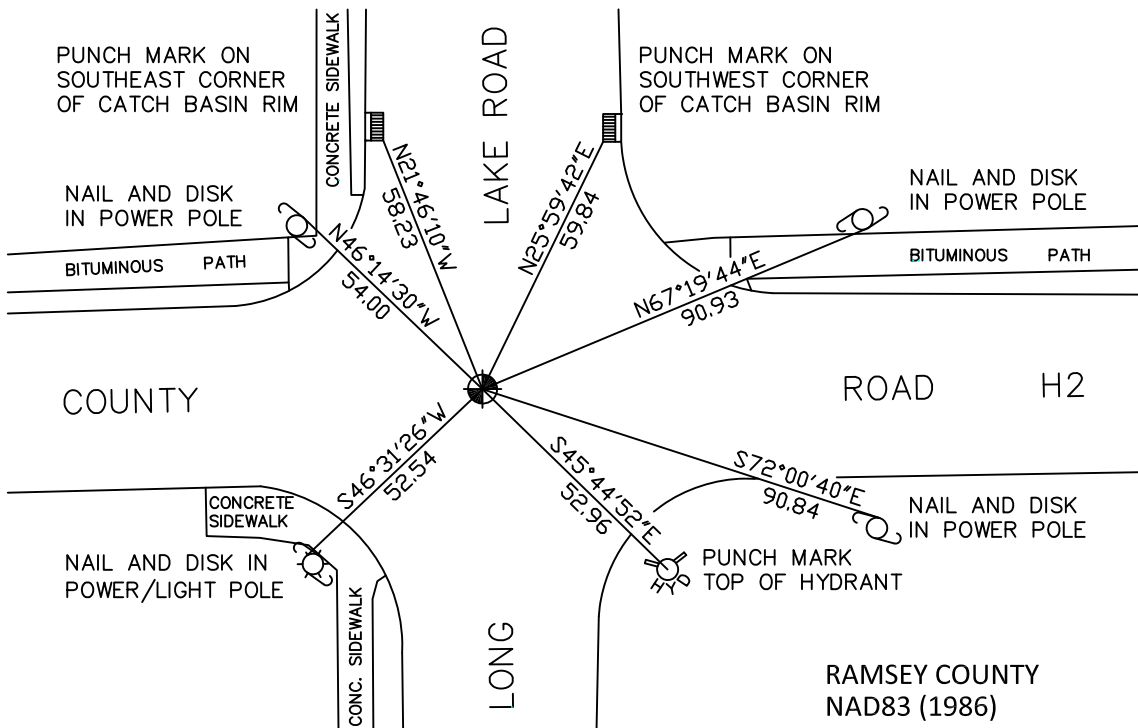
At the corner location shown on the sketch

On June 3, 2010 found a cast iron monument, within a cast iron manhole assembly.

left monument as found raised/lowered monument removed monument (explain)

On _____ placed a _____

SKETCH OF REFERENCE TIES



RAMSEY COUNTY
NAD83 (1986)

MONUMENT 78

ALL DISTANCES ARE SHOWN IN U.S. SURVEY FEET.
BEARINGS ARE FOR TIE REFERENCE PURPOSES ONLY.

X= 545055.034 (Easting)
Y= 212962.440 (Northing)

Statements of evidence relative to this corner are on the following page.

I hereby certify that this document has been prepared by me or under my direct supervision this _____ day of _____, 20____.

Minnesota License No. _____

- County Surveyor Deputy County Surveyor Land Surveyor

OFFICE OF COUNTY SURVEYOR
County of Ramsey

I hereby certify that this document was filed in the County Surveyor's office this _____ day of _____, 20____.

Michael D. Fiebiger, P.L.S.
Ramsey County Surveyor

MONUMENT 78

Found a cast iron monument, down 0.2 ft. and tied, August 19, 1974.

Monument removed by County Construction Dept., 1991.

Re-established monument position and placed a 20 in. cast iron monument, August 10, 1994.

Tied monument, December 2, 1994.

Retied monument, February 28, 1999.

Tied out monument for City of Mounds View reconstruction of County Road H2, August 12, 2002.

Relocated monument position and placed a 20 in. cast iron monument within a cast iron manhole assembly, May 23, 2003.

Tied monument, March 8, 2005.

Retied monument, June 3, 2010.