

MONUMENT 760

CERTIFICATE OF LOCATION OF GOVERNMENT CORNER

East Quarter Corner of Section 23, Township 28 North, Range 22 West, County of Ramsey, State of Minnesota.

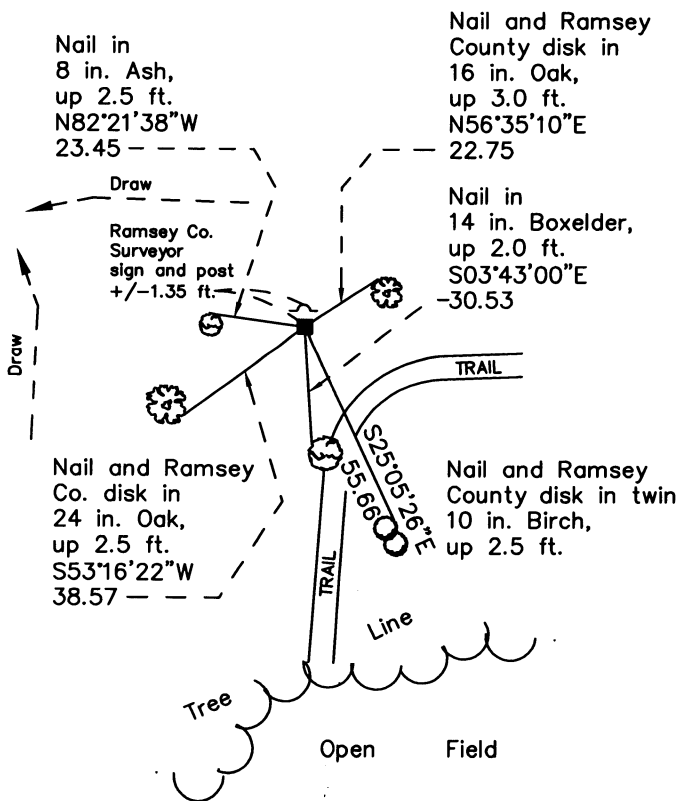
At the corner location shown on the sketch

On October 20, 2011 found a granite monument with drill hole, down 0.10 ft.

left monument as found raised/lowered monument removed monument (explain)

On _____ placed a _____

SKETCH OF REFERENCE TIES



RAMSEY COUNTY
NAD83 (1986)

MONUMENT 760

X= 598219.197 (Easting)
Y= 139174.838 (Northing)

ALL DISTANCES ARE SHOWN IN U.S. SURVEY FEET.
BEARINGS ARE FOR TIE REFERENCE PURPOSES ONLY.

Statements of evidence relative to this corner are on the following page.

I hereby certify that this document was prepared by me or under my direct supervision and that I am a duly Licensed Land Surveyor under the laws of the State of Minnesota.

Daniel D. Baar 9-5-12
Daniel D. Baar Date
Minnesota License No. 45816

County Surveyor Land Surveyor
 Deputy County Surveyor

OFFICE OF COUNTY SURVEYOR
County of Ramsey

I hereby certify that this document was filed in the County Surveyor's office this 5th day of September, 20 12.

Craig W. Hinzman
Craig W. Hinzman, L.S.
Ramsey County Surveyor

MONUMENT 760

East Quarter Corner of Section 23, Township 28 North, Range 22 West

Set 1/4 Section post, B. Oak 10, N6°W, 15; Burr Oak 12, S20°W, 35,
October 27, 1847.

Ramsey County Re-Survey map shows a monument at this location, +/-1897.

Found granite monument flush, no date given in survey field book.

Tied granite monument; set sign and post, April 17, 2001.

Retied monument, October 6, 2006.

Retied a granite monument with drill hole, down 0.1 ft., October 20, 2011.