

MONUMENT 76

CERTIFICATE OF LOCATION OF GOVERNMENT CORNER

West Quarter Corner of Section 7, Township 30 North, Range 23 West, County of Ramsey, State of Minnesota.

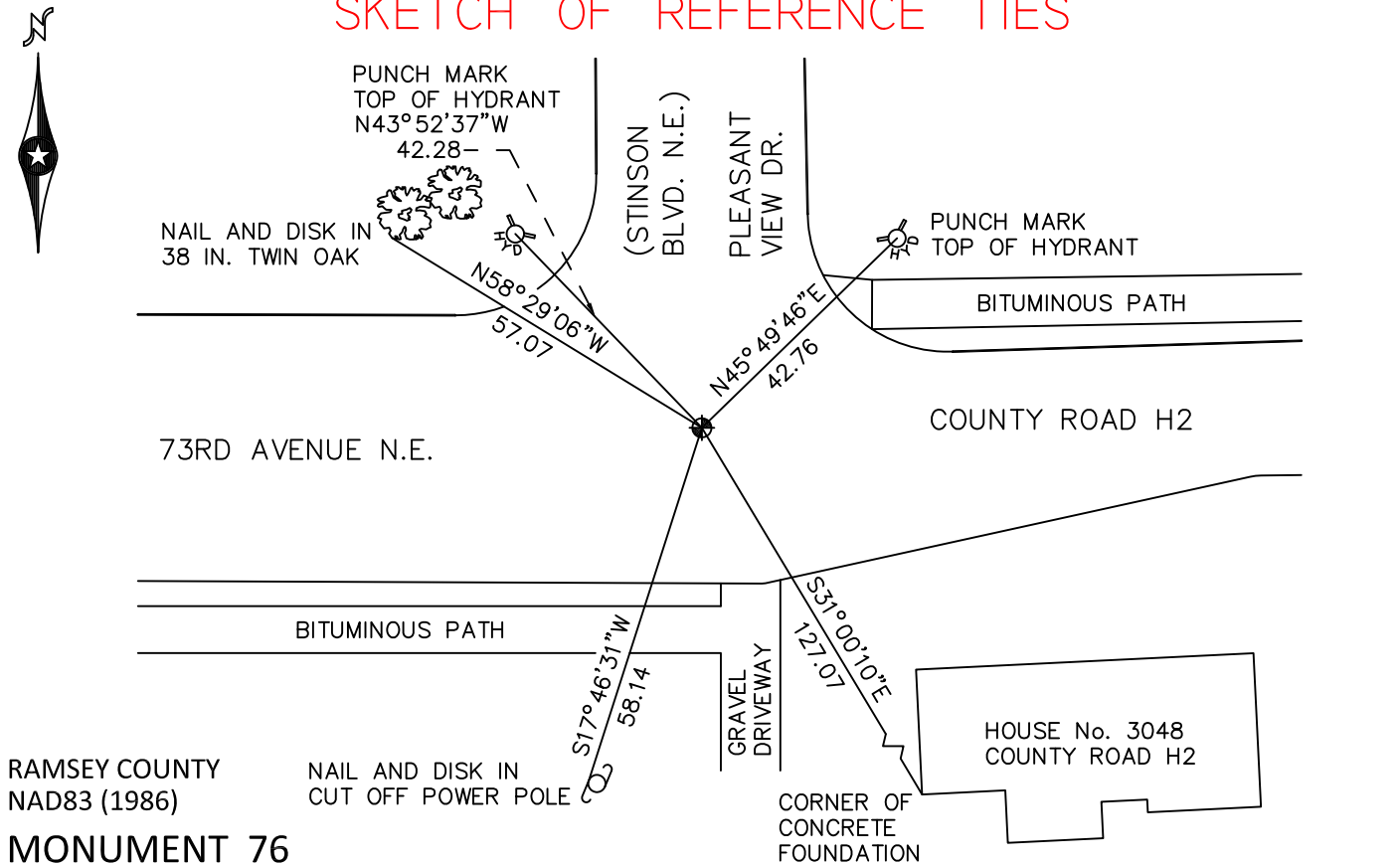
At the corner location shown on the sketch

On July 13, 2010 found cast iron monument, within a cast iron manhole assembly.

left monument as found raised/lowered monument removed monument (explain)

On _____ placed a _____

SKETCH OF REFERENCE TIES



RAMSEY COUNTY
NAD83 (1986)

NAIL AND DISK IN
CUT OFF POWER POLE

MONUMENT 76

X= 540174.913 (Easting)
Y= 212820.092 (Northing)

ALL DISTANCES ARE SHOWN IN U.S. SURVEY FEET.
BEARINGS ARE FOR TIE REFERENCE PURPOSES ONLY.

Statements of evidence relative to this corner are on the following page.

I hereby certify that this document has been prepared by me or under my direct supervision this _____ day of _____, 20____.

SIGNATURE

Minnesota License No. _____

County Surveyor Deputy County Surveyor Land Surveyor

OFFICE OF COUNTY SURVEYOR
County of Ramsey

I hereby certify that this document was filed in the County Surveyor's office this _____ day of _____, 20____.

SIGNATURE

Michael D. Fiebiger, P.L.S.
Ramsey County Surveyor

MONUMENT 76

Found a broken off cast iron monument; replaced monument, August 14, 1975.

Tied monument, January 28, 1976.

Retied monument, down +/-0.1 ft., February 1, 1993.

Retied monument, down +/-0.15 ft., October 17, 2000.

Tied out monument for City of Mounds View reconstruction of County Road H2, August 12, 2002.

Relocated monument position and placed a 20 in. cast iron monument within a cast iron manhole assembly, April 30, 2003.

Tied monument, March 8, 2005.

Retied monument, July 13, 2010.