

MONUMENT 701

CERTIFICATE OF LOCATION OF GOVERNMENT CORNER

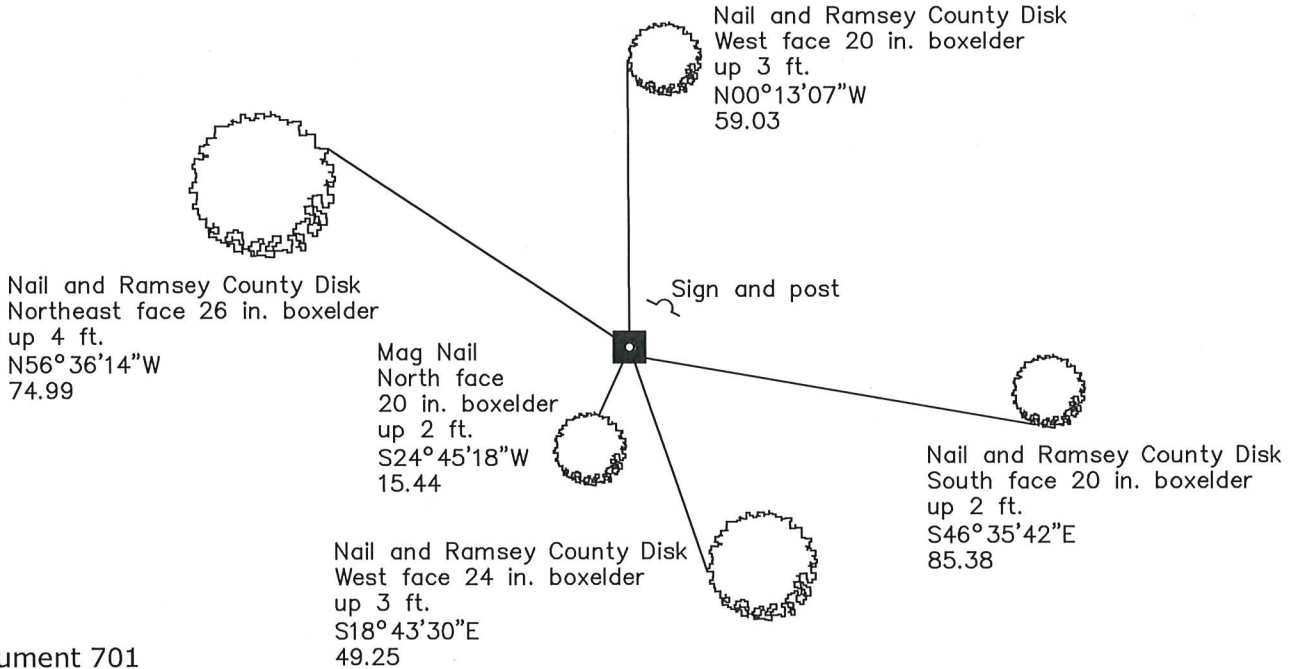
Center of Section 14, Township 28 North, Range 23 West, County of Ramsey, State of Minnesota.

At the corner location shown on the sketch

On December 10, 2020 found a granite monument, flush.

On _____ placed a _____

SKETCH OF REFERENCE TIES



Monument 701	
Ramsey County	
NAD83 (1986)	NAD83 (2011)
Northing = 144324.45	Northing = 144325.14
Easting = 563958.25	Easting = 563958.00

All distances are shown in U.S. Survey Feet.
Bearings are for tie reference purposes only.

Statements of evidence relative to this corner are on the following page.

I hereby certify that this survey, plan, or report was prepared by me or under my direct supervision, that I am a duly Licensed Land Surveyor under the laws of the state of Minnesota, and that this certificate is correct and complete to the best of my knowledge and belief.

Devin R. Ball 4/7/22
Date

Devin R. Ball
Deputy County Surveyor
Minnesota License No. 56023

OFFICE OF COUNTY SURVEYOR
County of Ramsey

I hereby certify that this document was filed in the County Surveyor's office this 7th day of April, 2022.

Daniel D. Baar

Daniel D. Baar
Ramsey County Surveyor
Minnesota License No. 45816

MONUMENT 701

Center of Section 14, Township 28, Range 23

August 1894	Monument set by J H Armstrong. St. Paul Surveyor's Office
March 24, 1987	Found a granite monument at grade. Placed 1/2 inch rebars along side monument and recorded local ties. St. Paul Surveyor's Office
February 12, 2007	Found granite monument 0.3 ft above grade. St. Paul Surveyor's Office
February 13, 2007	Placed ties on granite monument. St. Paul Surveyor's Office
May 2020	Found a granite monument, flush and inspected City of St. Paul ties. Ramsey County Surveyor's Office
December 10, 2020	Found a granite monument, flush and recorded new local ties. Ramsey County Surveyor's Office