

# MONUMENT 7SC

## CERTIFICATE OF LOCATION OF GOVERNMENT CORNER

Northeast Corner of Section 4, Township 30 North, Range 23 West, County of Ramsey, State of Minnesota.

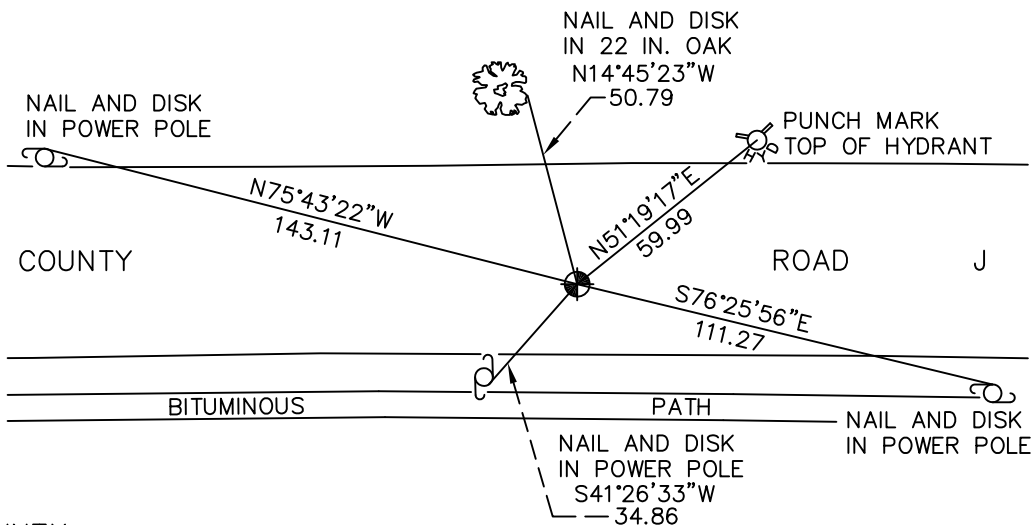
At the corner location shown on the sketch

On September 2, 2009 found a cast iron monument, marked "3RD CORRECTION LINE",  
(2622.77 feet east of monument 6SC), flush.

left monument as found     lowered monument     removed monument (explain)

On \_\_\_\_\_ placed a \_\_\_\_\_

## SKETCH OF REFERENCE TIES



RAMSEY COUNTY

NAD83 (1986)

MONUMENT 7SC

X= 555491.666 (Easting)  
 Y= 221556.095 (Northing)  
 "CLOSING CORNER" IS 5.88 FT. NORTH.

ALL DISTANCES ARE SHOWN IN U.S. SURVEY FEET.  
 BEARINGS ARE FOR TIE REFERENCE PURPOSES ONLY.

Statements of evidence relative to this corner are on the following page(s).

I hereby certify that this document and the data contained herein was prepared by me or under my direct supervision this \_\_\_\_\_ day of \_\_\_\_\_, 20\_\_\_\_.

SIGNATURE

Minnesota License No. \_\_\_\_\_

- County Surveyor  
 Deputy County Surveyor     Land Surveyor

OFFICE OF COUNTY SURVEYOR

County of Ramsey

I hereby certify that this document was filed in the County Surveyor's office on the \_\_\_\_\_ day of \_\_\_\_\_, 20\_\_\_\_.

SIGNATURE

Michael D. Fiebiger, P.L.S.  
 Ramsey County Surveyor

## MONUMENT 7SC

Found granite monument, down 0.33 ft.; set a cast iron cap and bolt monument, July 16, 1975.

Retied monument, December 9, 1975.

Construction destroyed monument during 1987.

Relocated position, and tied, August 31, 1988.

Placed 20 in. cast iron monument, October 25, 1988.

Retied monument, September 1, 1993.

Placed "Set 45" concrete around monument, October 10, 1993.

Set 20 in. cast iron monument marked "3RD CORRECTION LINE", 5.88 ft. south of the original granite monument location, July 20, 1995.

Tied monument 7SC, December 14, 1998.

Retied monument, June, 2004.

Retied monument, September 2, 2009.