

MONUMENT 69E

CERTIFICATE OF LOCATION OF GOVERNMENT CORNER

Witness Corner to the South Quarter Corner of Section 3, Township 30 North,
Range 22 West, County of Ramsey, State of Minnesota.

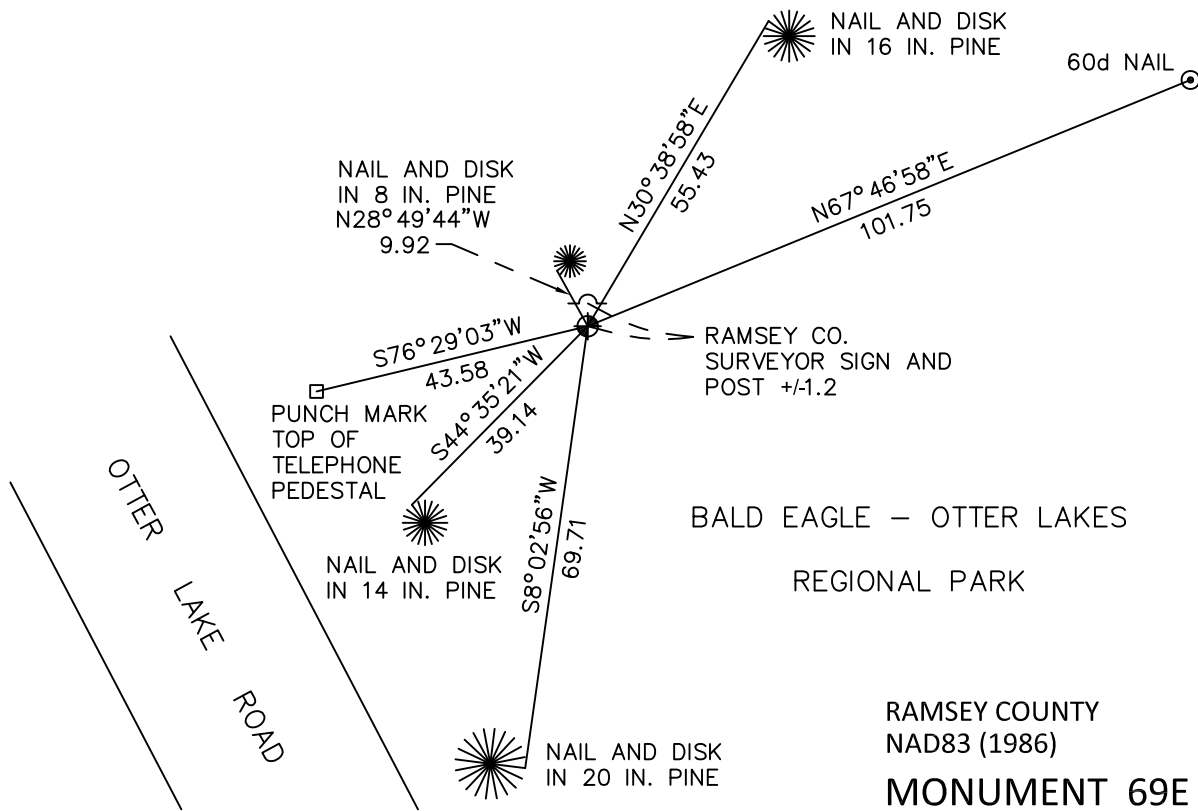
At the corner location shown on the sketch

On April 5, 2010 found a cast iron monument, down 0.25 feet.

left monument as found raised/lowered monument removed monument (explain)

On _____ placed a _____

SKETCH OF REFERENCE TIES



ALL DISTANCES ARE SHOWN IN U.S. SURVEY FEET.
BEARINGS ARE FOR TIE REFERENCE PURPOSES ONLY.

BALD EAGLE - OTTER LAKES
REGIONAL PARK

RAMSEY COUNTY
NAD83 (1986)

MONUMENT 69E

X= 589473.296 (Easting)
Y= 215796.903 (Northing)

Statements of evidence relative to this corner are on the following page.

I hereby certify that this document has been prepared by me or under my direct supervision this _____ day of _____, 20____.

Minnesota License No. _____

- County Surveyor Land Surveyor
 Deputy County Surveyor

OFFICE OF COUNTY SURVEYOR
County of Ramsey

I hereby certify that this document was filed in the County Surveyor's office this _____ day of _____, 20____.

Michael D. Fiebiger, P.L.S.
Ramsey County Surveyor

MONUMENT 69E

Placed 20 in. cast iron monument on the south line of the Southwest Quarter, September 2, no year recorded in field book.

Placed sign and post +/-1.0 ft. north of monument, September 28, 1991.

Tied monument, December 28, 1992.

Retied monument, December 6, 1999.

Retied monument, August 27, 2004.

Retied monument, April 5, 2010.