

OFFICE

0235-1292-A

(CITY) Index No. 235

OLD INDEX No 1292

# CERTIFICATE OF LOCATION OF GOVERNMENT CORNER

1/4 Corner of Section 16, Township 28, Range 23, \_\_\_\_\_ P.M.

STATE OF MINNESOTA, County of RAMSEY

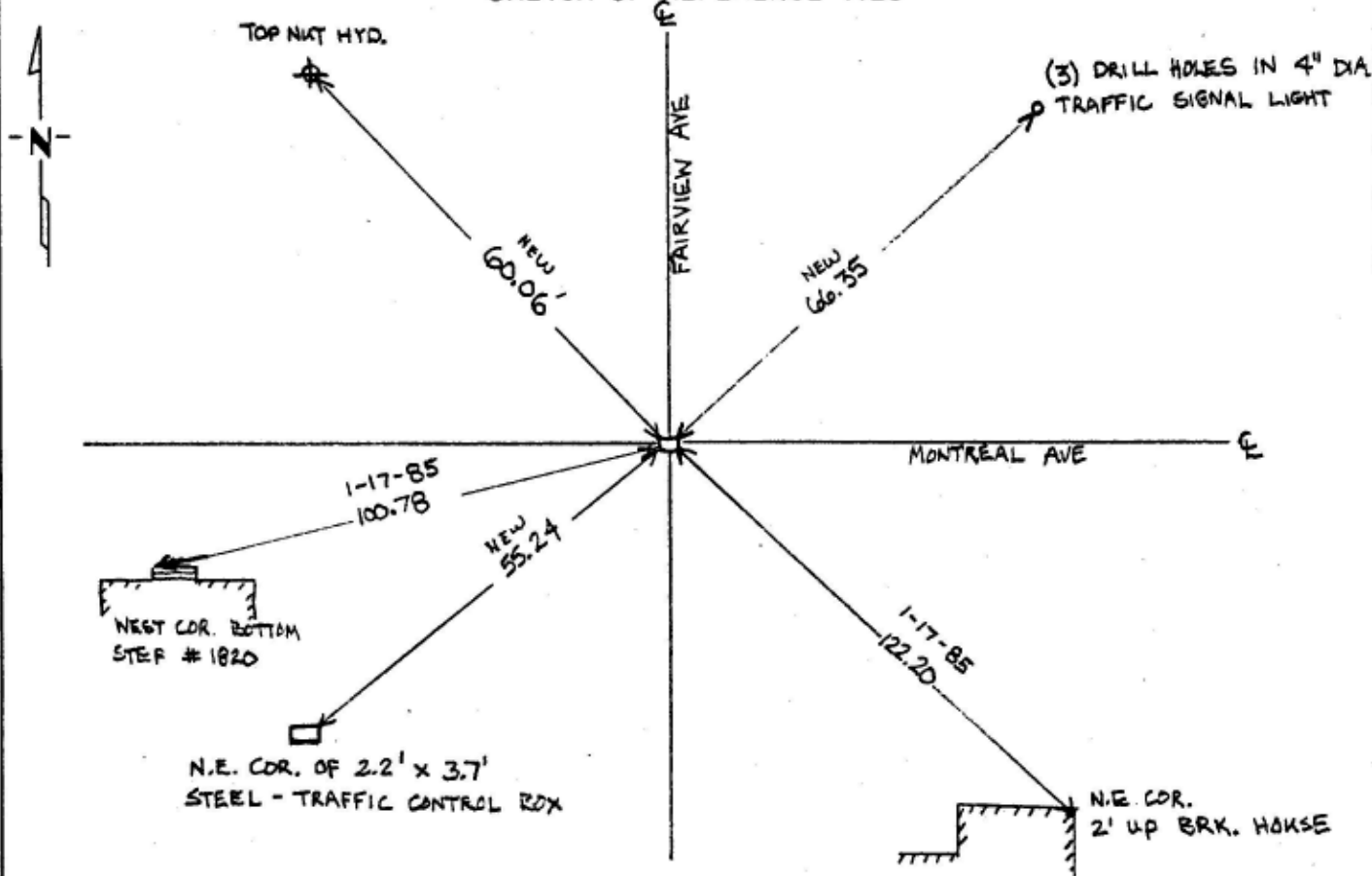
At the corner location shown on the sketch:

On SEPT. 30, 1994 found a CAST IRON MONT. AT GRADE  
DATE

left monument as found,  lowered monument,  removed monument (explain)

On \_\_\_\_\_ placed a \_\_\_\_\_  
DATE

## SKETCH OF REFERENCE TIES



SKETCH BY: M. WASSMAN ON OCT. 3, 1994

FIELD TIES BY: D. NELSON, M.W. # 88711 9-30-94

Statement of evidence relative to this corner location is on back of page.

I hereby certify that this document and the data contained herein was prepared by me or under my direct supervision.

\_\_\_\_\_  
SIGNATURE DATE

Registration No. \_\_\_\_\_

Land Surveyor,  Professional Engineer

County Surveyor,  County Engineer

OFFICE OF THE COUNTY RECORDER

County of \_\_\_\_\_

I hereby certify that this document was filed in the Co. Recorders office at \_\_\_\_\_ .M. on the \_\_\_\_\_ day of \_\_\_\_\_ A.D., 19 \_\_\_\_\_

County Recorder \_\_\_\_\_

By \_\_\_\_\_, Deputy

DOCUMENT NO. \_\_\_\_\_