

# MONUMENT 69

## CERTIFICATE OF LOCATION OF GOVERNMENT CORNER

Northeast Corner of Section 9, Township 30 North, Range 22 West, County of Ramsey, State of Minnesota.

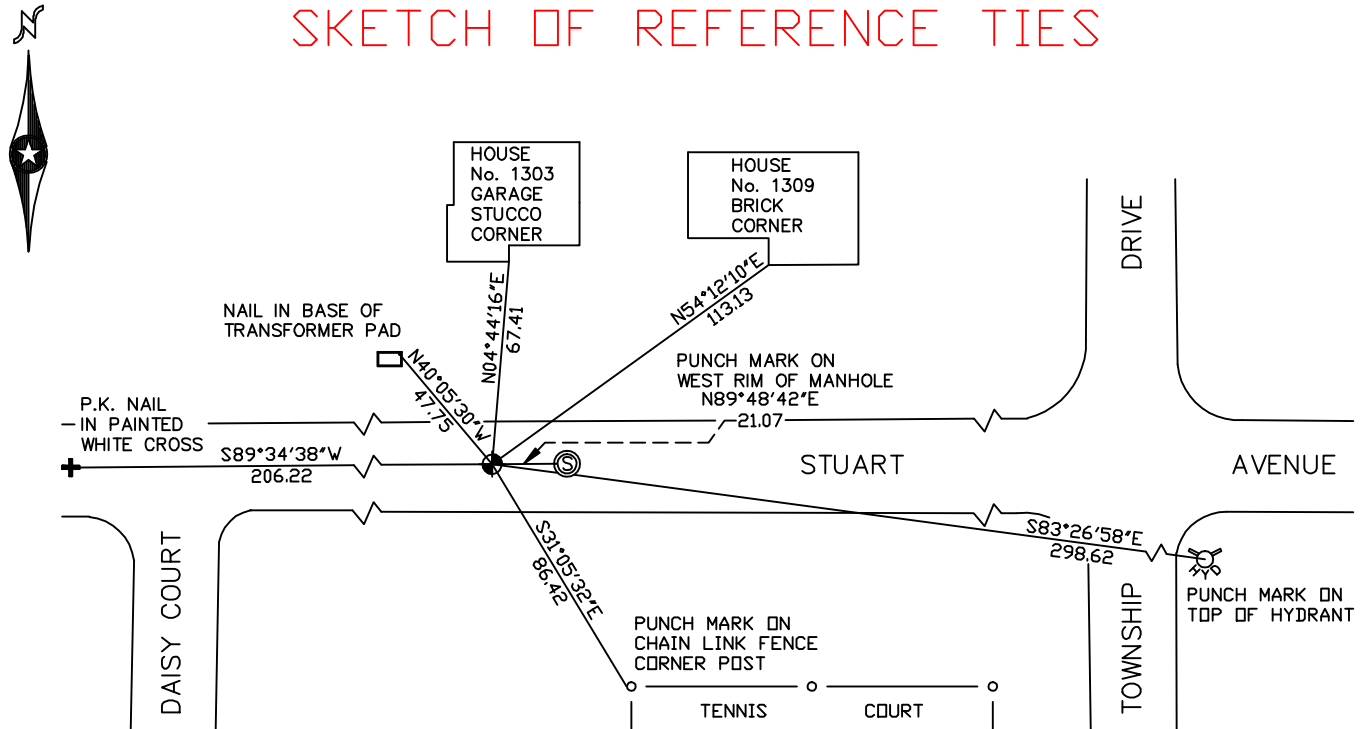
At the corner location shown on the sketch

On November 9, 2009 found a cast iron monument, within a cast iron manhole assembly.

left monument as found     lowered monument     removed monument (explain)

On \_\_\_\_\_ placed a \_\_\_\_\_

### SKETCH OF REFERENCE TIES



RAMSEY COUNTY

NAD83 (1986)

MONUMENT 69

X= 587081.199 (Easting)  
Y= 215804.270 (Northing)

ALL DISTANCES ARE SHOWN IN U.S. SURVEY FEET.  
BEARINGS ARE FOR TIE REFERENCE PURPOSES ONLY.

Statements of evidence relative to this corner are on the following page(s).

I hereby certify that this document and the data contained herein was prepared by me or under my direct supervision this \_\_\_\_\_ day of \_\_\_\_\_, 20\_\_\_\_.

SIGNATURE

Minnesota License No. \_\_\_\_\_

- County Surveyor  
 Deputy County Surveyor     Land Surveyor

OFFICE OF COUNTY SURVEYOR

County of Ramsey

I hereby certify that this document was filed in the County Surveyor's office on the \_\_\_\_\_ day of \_\_\_\_\_, 20\_\_\_\_.

SIGNATURE

Michael D. Fiebiger, P.L.S.  
Ramsey County Surveyor

## MONUMENT 69

**Found a 2 in. pipe over a granite monument; granite down 2.4 ft.; placed a 20 in. cast iron monument flush with surface, June 19, 1974.**

**Development removed monuments; placed a 20 in. cast iron monument in street, flush, 1977.**

**Tied monument, down +/-0.1 ft., April 12, 1990.**

**Retied monument, down +/-0.1 ft., November 15, 1999.**

**Retied monument, September 26, 2004.**

**Retied monument, November 9, 2009.**