

MONUMENT 670

CERTIFICATE OF LOCATION OF GOVERNMENT CORNER

East Quarter Corner of Section 12, Township 28 North, Range 22 West, County of Ramsey, State of Minnesota.

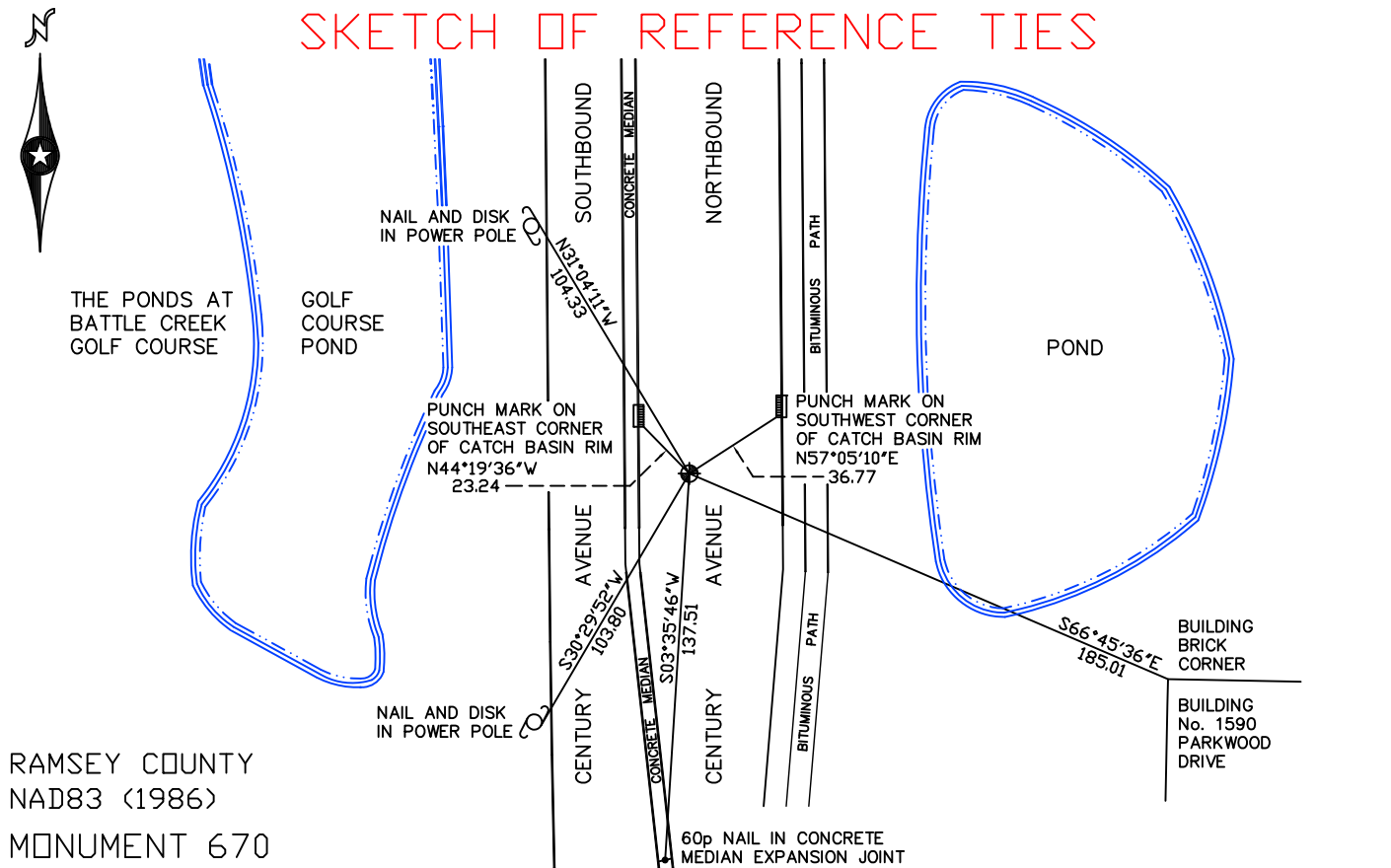
At the corner location shown on the sketch

On June 16, 2010 found a cast iron monument, within a cast iron manhole assembly.

left monument as found lowered monument removed monument (explain)

On _____ placed a _____

SKETCH OF REFERENCE TIES



RAMSEY COUNTY
NAD83 (1986)
MONUMENT 670

X= 603313.702 (Easting)
Y= 149793.512 (Northing)

ALL DISTANCES ARE SHOWN IN U.S. SURVEY FEET.
BEARINGS ARE FOR TIE REFERENCE PURPOSES ONLY.

Statements of evidence relative to this corner are on the following page(s).

I hereby certify that this document and the data contained herein was prepared by me or under my direct supervision this _____ day of _____, 20____.

SIGNATURE

Minnesota License No. _____

County Surveyor
 Deputy County Surveyor Land Surveyor

OFFICE OF COUNTY SURVEYOR
County of Ramsey

I hereby certify that this document was filed in the County Surveyor's office on the _____ day of _____, 20____.

SIGNATURE

Michael D. Fiebiger, P.L.S.
Ramsey County Surveyor

MONUMENT 670

Found a cast iron monument down 1 in., tied, August 5, 1974.

Dug for granite monument. Hole was 3 ft. long (north and south), 3 ft. wide (east and west), and 5 ft. deep; hit natural ground at approximately 3 1/2 ft., found nothing. Digging done by Washington County Surveyors office, December 26, 1974.

Reset Washington County monument at old location to fit field stone at Sixteenth Corner, west of the East Quarter Corner and tied monument, April 12, 1976.

Retied monument, April 10, 2001.

Tied out monument for removal during road reconstruction, October 14, 2008.

Monument removed for road reconstruction, June, 2009.

Reset a 20 in. cast iron monument within a cast iron manhole assembly; manhole assembly set by road construction crew, June 9, 2010.

Tied monument, June 16, 2010.