

MONUMENT 669

CERTIFICATE OF LOCATION OF SECTION SUBDIVISION MONUMENT

Center of Section 12, Township 28 North, Range 22 West, County of Ramsey, State of Minnesota.

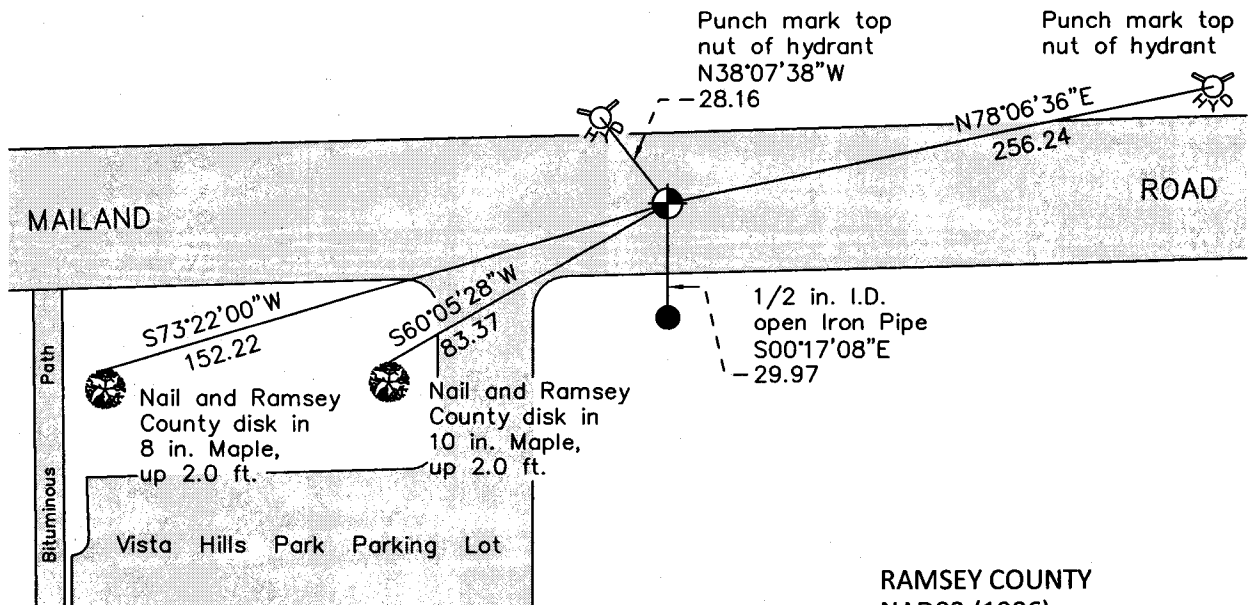
At the corner location shown on the sketch

On June 3, 2011 found a cast iron monument, within a cast iron manhole assembly.

left monument as found raised/lowered monument removed monument (explain)

On _____ placed a _____

SKETCH OF REFERENCE TIES



RAMSEY COUNTY
NAD83 (1986)
MONUMENT 669

ALL DISTANCES ARE SHOWN IN U.S. SURVEY FEET.
BEARINGS ARE FOR TIE REFERENCE PURPOSES ONLY.

X= 600678.476 (Easting)
Y= 149719.028 (Northing)

Statements of evidence relative to this corner are on the following page.

I hereby certify that this document was prepared by me or under my direct supervision and that I am a duly Licensed Land Surveyor under the laws of the State of Minnesota.

Daniel D. Baar 7-24-12
Daniel D. Baar Date
Minnesota License No. 45816

- County Surveyor Land Surveyor
 Deputy County Surveyor

OFFICE OF COUNTY SURVEYOR
County of Ramsey

I hereby certify that this document was filed in the County Surveyor's office this 24th day of July, 20 12.

Craig W. Hinzman
Craig W. Hinzman, L.S.
Ramsey County Surveyor

MONUMENT 669

Center of Section 12, Township 28 North, Range 22 West

Fixed the Center of Section 12 by intersection, April, 1899.

Set monument, August 12, 1899.

Found a granite monument up +/-7 in. and tied, August 5, 1974.

Monument destroyed by construction; set a cast iron monument, 1980.

Tied out for the City of Maplewood construction, July 31, 1997.

Removed cast iron monument, August 26, 1997.

Set a 20 in. cast iron monument down 18 in. within a cast iron manhole assembly, 1998.

Tied monument, April 18, 2001.

Retied monument, September 7, 2006.

Retied a cast iron monument, within a cast iron manhole assembly, June 3, 2011.