

# MONUMENT 66

## CERTIFICATE OF LOCATION OF GOVERNMENT CORNER

North Quarter Corner of Section 8, Township 30 North, Range 22 West,  
County of Ramsey, State of Minnesota.

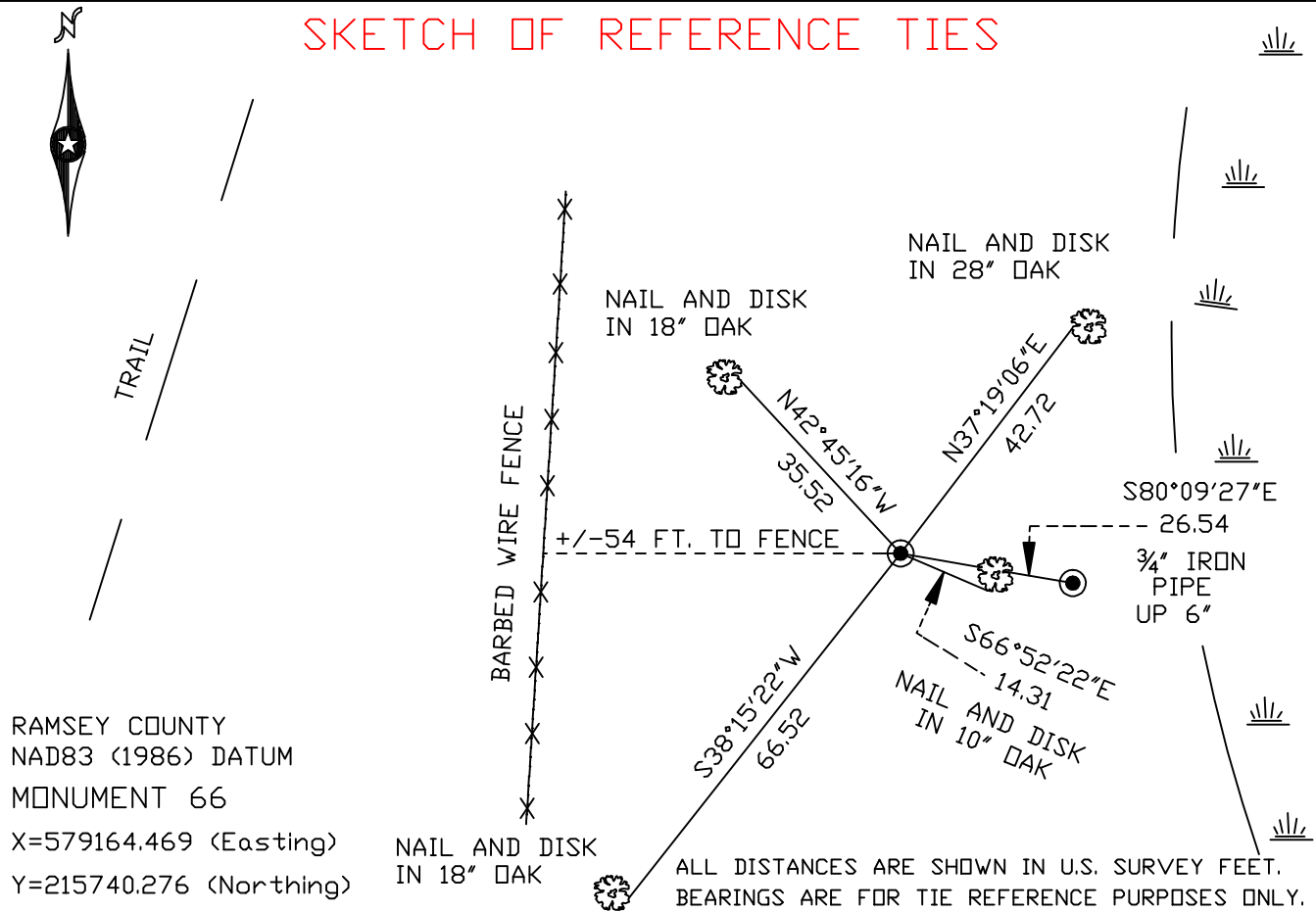
At the corner location shown on the sketch

On February 17, 2005 found an iron pipe in concrete.

left monument as found,  lowered monument,  removed monument (explain)

On \_\_\_\_\_ placed a \_\_\_\_\_

### SKETCH OF REFERENCE TIES



Statements of evidence relative to this corner are on the following page(s).

I hereby certify that this document and the data contained herein was prepared by me or under my direct supervision this \_\_\_\_\_ day of \_\_\_\_\_, 20\_\_\_\_.

SIGNATURE

Minnesota License No. \_\_\_\_\_

- Land Surveyor     Professional Engineer  
 County Surveyor     County Engineer

#### OFFICE OF COUNTY SURVEYOR

County of Ramsey

I hereby certify that this document was filed in the County Surveyor's office on the \_\_\_\_ day of \_\_\_\_\_, 20\_\_\_\_.

David D. Claypool, P.L.S., County Surveyor

By \_\_\_\_\_, Deputy

## MONUMENT 66

**Found iron pipe in concrete placed by Milner W. Carley and Associates;  
tied monument, March, 1988.**

**Retied monument, February 17, 2005.**