

# MONUMENT 65N

## CERTIFICATE OF LOCATION OF GOVERNMENT CORNER

Monument on the East line of the Southeast Quarter of Section 6, Township 30 North, Range 22 West, County of Ramsey, State of Minnesota.

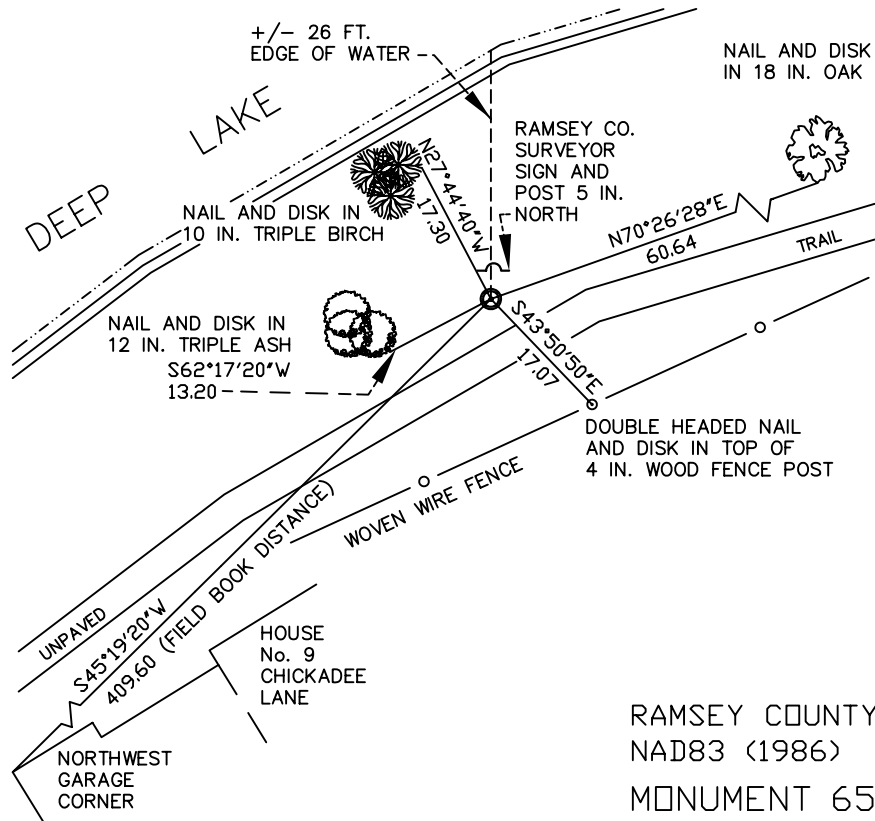
At the corner location shown on the sketch

On July 11, 2007 found a 1/2 in. iron pipe within a 5 in. iron pipe and concrete, down 5 inches.

left monument as found     lowered monument     removed monument (explain)

On \_\_\_\_\_ placed a \_\_\_\_\_

### SKETCH OF REFERENCE TIES



RAMSEY COUNTY  
NAD83 (1986)

MONUMENT 65N

X= 576542.968 (Easting)  
Y= 217194.002 (Northing)

ALL DISTANCES ARE SHOWN IN U.S. SURVEY FEET.  
BEARINGS ARE FOR TIE REFERENCE PURPOSES ONLY.

Statements of evidence relative to this corner are on the following page(s).

I hereby certify that this document and the data contained herein was prepared by me or under my direct supervision this \_\_\_\_\_ day of \_\_\_\_\_, 20\_\_\_\_.

SIGNATURE

Minnesota License No. \_\_\_\_\_

- County Surveyor  
 Deputy County Surveyor     Land Surveyor

OFFICE OF COUNTY SURVEYOR  
County of Ramsey

I hereby certify that this document was filed in the County Surveyor's office on the \_\_\_\_ day of \_\_\_\_\_, 20\_\_\_\_.

David D. Claypool, P.L.S., County Surveyor

By \_\_\_\_\_, Deputy

# MONUMENT 65N

Found an iron pipe in concrete and pipe; set by Milner W. Carley and Associates.  
Placed a sign and post, May 9, 1991.

Retied monument, October 16, 2001.

Retied monument down 5 in., July 11, 2007.