

# MONUMENT 655

## CERTIFICATE OF LOCATION OF GOVERNMENT CORNER

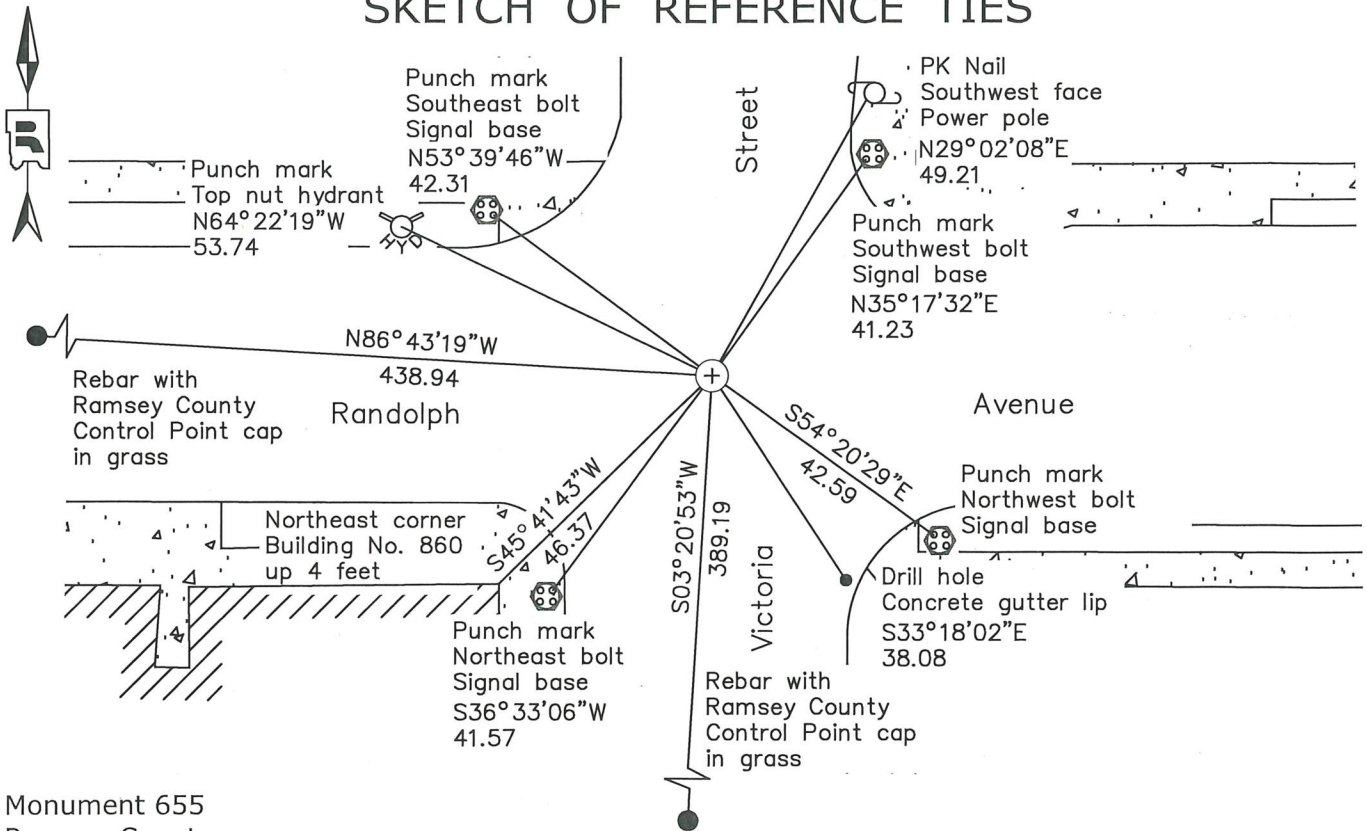
Center of Section 11, Township 28 North, Range 23 West, County of Ramsey, State of Minnesota.

At the corner location shown on the sketch

On October 11, 2022 found a cast iron monument in bituminous.

On October 9, 2023 placed a 5/8 inch by 4 1/2 inch rebar with 3 inch aluminum cap stamped "Ramsey County Surveyor" over a broken cast iron monument.

### SKETCH OF REFERENCE TIES



Monument 655  
 Ramsey County  
 NAD83 (1986)  
 Northing = 149604.35  
 Easting = 563958.04

All distances are shown in U.S. Survey Feet.  
 Bearings are for tie reference purposes only.

Statements of evidence relative to this corner are on the following page.

I hereby certify that this survey, plan, or report was prepared by me or under my direct supervision, that I am a duly Licensed Land Surveyor under the laws of the state of Minnesota, and that this certificate is correct and complete to the best of my knowledge and belief.

Devin R. Ball 5/31/24  
 Devin R. Ball Date  
 Deputy County Surveyor  
 Minnesota License No. 56023

OFFICE OF COUNTY SURVEYOR  
 County of Ramsey  
 I hereby certify that this document was filed in the County Surveyor's office this 4<sup>th</sup> day of June, 2024.

Daniel D. Baar  
 Daniel D. Baar  
 Ramsey County Surveyor  
 Minnesota License No. 45816

# MONUMENT 655

Center of Section 11, Township 28 North, Range 23 West

July 7, 1881	The plat of WATSON'S ADDITION To The CITY OF ST PAUL calls out a stone monument at the Center of Section 11. Simar and Morton Civil Engineers
June 7, 1882	The plat of CLARKE'S ADDITION TO CITY OF ST PAUL shows a stone monument at the Center of Section 11. Simar and Morton Civil Engineers
July 17, 1888	Monument dug out by Water Dept. put in by J H Armstrong. St. Paul Surveyor's office
July 12, 1949	Placed ties. St. Paul Surveyor's Office
May, 1961	Placed ties. St. Paul Surveyor's Office
July 28, 1972	Set CIM cap with extension rod in concrete base over GM to bring to grade, GM 0.6 feet below grade. St. Paul Surveyor's Office
February 5, 1990	Found iron pin, measured to Monument 176. St. Paul Surveyor's Office
September 28, 1990	Fd GM, left GM as found, placed ties. St. Paul Surveyor's Office
November, 1994	Fd CIM, placed ties. St. Paul Surveyor's Office
November 7, 1994	Set CIM in concrete, placed ties. St. Paul Surveyor's Office
June 16, 2000	Fd CIM. St. Paul Surveyor's Office
November 7, 2002	Side Shot in place CIM. St. Paul Surveyor's Office
October 22, 2012	Found CIM at street grade. St. Paul Surveyor's Office
October 11, 2022	Found a cast iron monument in bituminous. Established offsets and checked local ties prior to removal during road construction. Ramsey County Surveyor's Office
October 9, 2023	Placed a 5/8 inch by 4½ inch rebar with 3 inch aluminum cap stamped "Ramsey County Surveyor" over broken cast iron monument following road construction using offsets. Recorded local ties. Ramsey County Surveyor's Office