

CERTIFICATE OF LOCATION OF FOUND MONUMENT

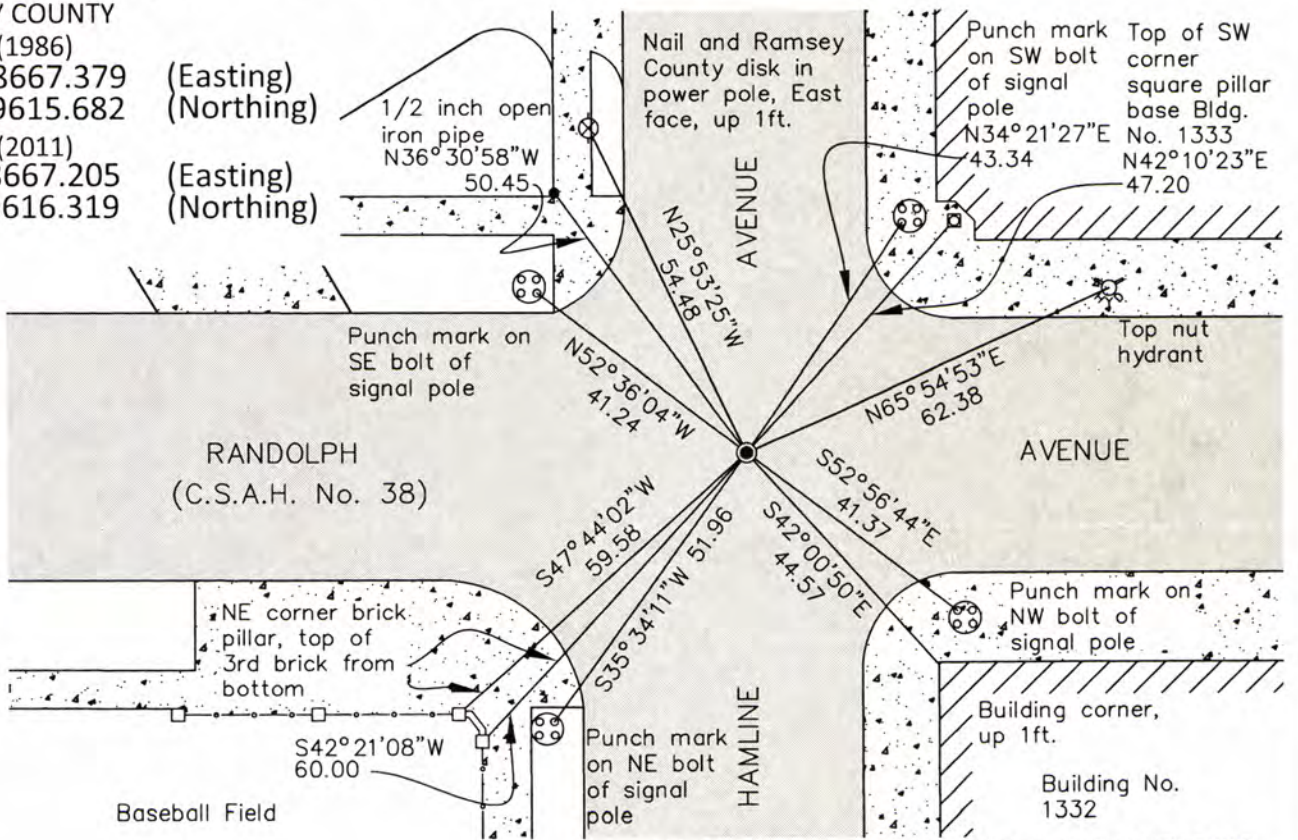
Center of Section 10, Township 28 North, Range 23 West, County of Ramsey, State of Minnesota.

At the corner location shown on the sketch

- On May 20, 2015 found Brass disk, flush with bituminous road. Top of brass disk damaged.
 Removed brass disk to expose rebar. Tied out rebar, in granite monument drill hole, for removal during road reconstruction.
 - left monument as found
 - raised/lowered monument
 - removed monument (explain)
- On May 16, 2016 placed a cast iron monument marked "Ramsey County". Cast iron manhole assembly over monument to be set by others.

MONUMENT 653 SKETCH OF REFERENCE TIES

RAMSEY COUNTY
 NAD83 (1986)
 X= 558667.379 (Easting)
 Y= 149615.682 (Northing)
 NAD83 (2011)
 X= 558667.205 (Easting)
 Y= 149616.319 (Northing)



ALL DISTANCES ARE SHOWN IN U.S. SURVEY FEET. BEARINGS ARE FOR TIE REFERENCE PURPOSES ONLY.

Statements of evidence relative to this corner are on the following page.

I hereby certify that this survey, plan, or report was prepared by me or under my direct supervision, that I am a duly Licensed Land Surveyor under the laws of the state of Minnesota, and that this certificate is correct and complete to the best of my knowledge and belief.

Daniel D. Baar 9-13-16
 Daniel D. Baar Date
 Deputy County Surveyor
 Minnesota License No. 45816

OFFICE OF COUNTY SURVEYOR
 County of Ramsey

I hereby certify that this document was filed in the County Surveyor's office this 13th day of September, 20 16.

Craig W. Hinzman
 Craig W. Hinzman, L.S.
 Ramsey County Surveyor

MONUMENT 653

Center of Section 10, Township 28, Range 23

January, 1887	Monument set by Murray at center of section. Ties from Elmer and Morrision. City of St. Paul Surveyor's Office
July 28, 1972	Patched around granite monument. Set cast iron monument cap in drill hole of granite monument. City of St. Paul Surveyor's Office
April, 1991	Found PK nail. City of St. Paul Surveyor's Office
March, 2000	Found bent 1/2 inch pin. Used base of pin. marked for painting target for 2000 aerial flight. City of St. Paul Surveyor's Office
September 24, 2002	Placed 4 large PK nails as 2 foot straddles in new asphalt overlay. Placed ties on granite monument. Recovered 1/2 inch diameter by 3 1/2 inch long bolt (bent over) embedded in drill hole of granite monument. Removed said bolt in granite monument. Granite monument left as found, top of granite monument chewed up. Set 1/2 inch diameter rebar with 2 inch diameter bronze cap epoxied into the center drill hole of granite monument. Bronze cap set to grade of 1 1/2 inch asphalt overlay. City of St. Paul Surveyor's Office
October 18, 2012	Found brass disc at street grade. photos taken. City of St. Paul Surveyor's Office
May 20, 2015	Found brass cap at grade. Brass cap in bad condition. Checked ties on brass cap to find that it was leaning Southerly. Removed brass cap to where rebar was straight again. Checked ties on rebar to find that they matched record distances from St. Paul Certificate of Location dated September 24, 2002. Tied out monument for removal during road reconstruction. Ramsey County Surveyor's Office
October 15, 2015	Granite monument exposed during road reconstruction. Checked ties directly on granite monument to compare to ties taken May 20, 2015. Granite monument removed shortly after ties checked. Ramsey County Surveyor's Office
May 16, 2016	Set 20 inch Ramsey County cast iron monument using construction ties and local ties. Performed 50 minute GPS static observation on cast iron monument and tied monument. Manhole assembly over monument to be set by others during construction. Ramsey County Surveyor's Office