

MONUMENT 647

CERTIFICATE OF LOCATION OF GOVERNMENT CORNER

Northeast Corner of Section 12, Township 28 North, Range 22 West, County of Ramsey, State of Minnesota.

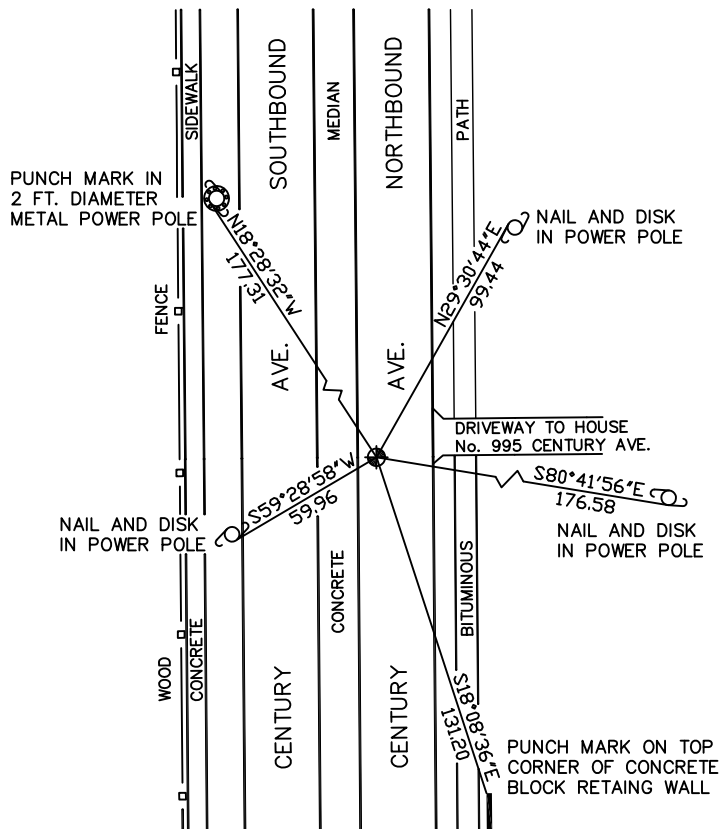
At the corner location shown on the sketch

On June 18, 2010 found a cast iron monument, within a cast iron manhole assembly.

left monument as found lowered monument removed monument (explain)

On _____ placed a _____

SKETCH OF REFERENCE TIES



RAMSEY COUNTY
NAD83 (1986)
MONUMENT 647

X= 603292.510 (Easting)
Y= 152434.066 (Northing)

ALL DISTANCES ARE SHOWN IN U.S. SURVEY FEET.
BEARINGS ARE FOR TIE REFERENCE PURPOSES ONLY.

Statements of evidence relative to this corner are on the following page(s).

I hereby certify that this document and the data contained herein was prepared by me or under my direct supervision this _____ day of _____, 20____.

SIGNATURE

Minnesota License No. _____

- County Surveyor
 Deputy County Surveyor Land Surveyor

OFFICE OF COUNTY SURVEYOR
County of Ramsey

I hereby certify that this document was filed in the County Surveyor's office on the _____ day of _____, 20____.

SIGNATURE

Michael D. Fiebiger, P.L.S.
Ramsey County Surveyor

MONUMENT 647

Found a granite monument under an iron pipe, down 8 1/2 in., January 9, 1975.

Placed a short (4 5/8 in.) cast iron monument, July 8, 1975.

Tied monument, February 18, 1976.

Short cast iron monument gone; dug down to granite monument, set a short (4 5/8 in.) cast iron monument in concrete, November 9, 1990.

Found top broken off of monument, July 2, 1999.

Tied monument out for removal during future road reconstruction, April 15, 2009.

Set a 20 in. cast iron monument within a cast iron manhole assembly, manhole assembly set by road construction crew, June 9, 2010.

Tied monument, June 18, 2010.