

# MONUMENT 646

## CERTIFICATE OF LOCATION OF GOVERNMENT CORNER

North Quarter Corner of Section 12, Township 28 North, Range 22 West, County of Ramsey, State of Minnesota.

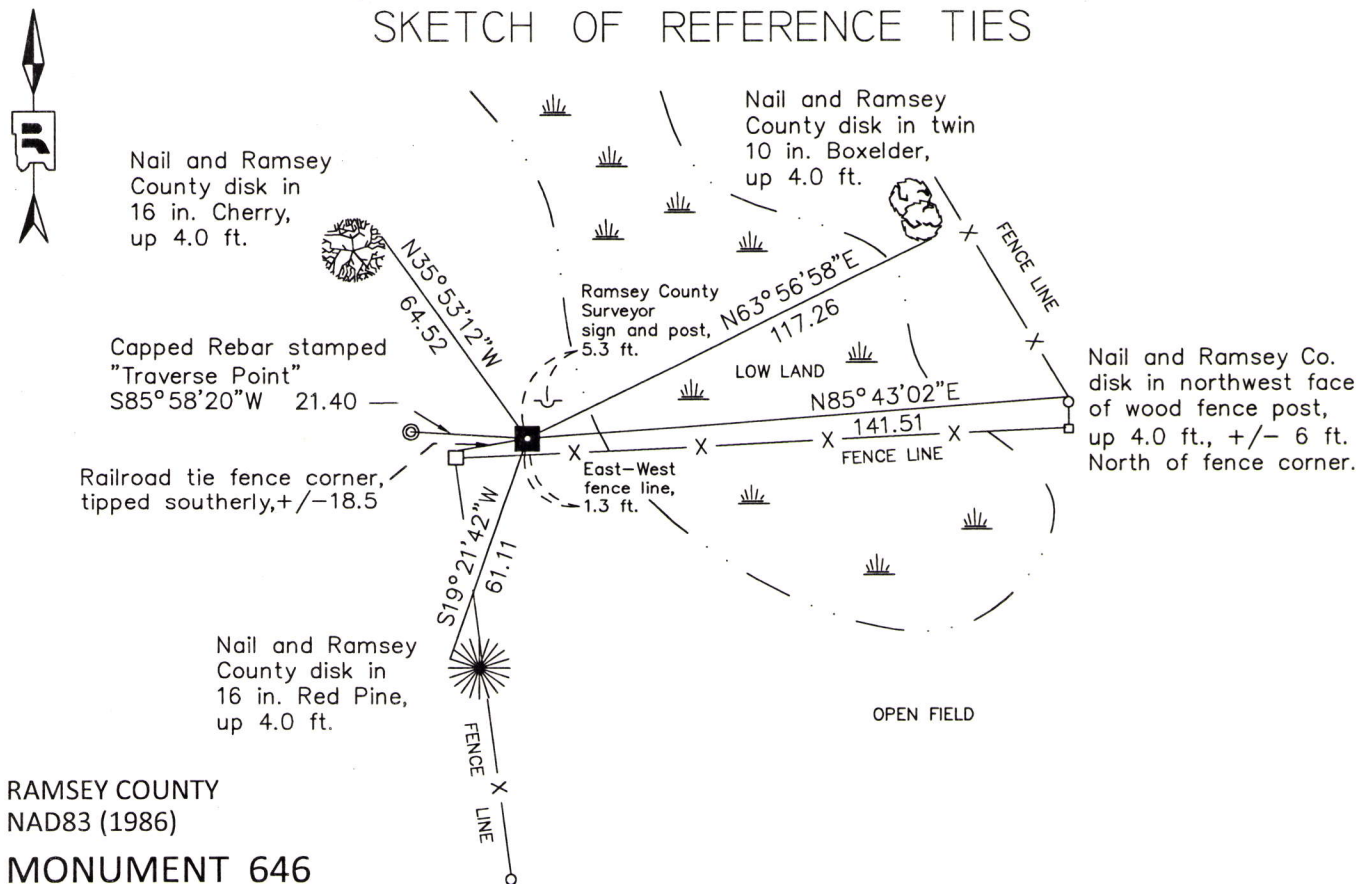
At the corner location shown on the sketch

On May 7, 2013 found an 8 inch square granite monument with drill hole, up 0.75 ft. tipped and leaning easterly ±0.5 ft.

left monument as found       raised/lowered monument       removed monument (explain)

On May 8, 2013 straightened granite monument to location per historical traverse; reinforced monument with concrete and a metal "u" sign post on the east side. Established reference ties.

### SKETCH OF REFERENCE TIES



RAMSEY COUNTY  
NAD83 (1986)

### MONUMENT 646

X= 600663.107 (Easting)  
Y= 152348.229 (Northing)

ALL DISTANCES ARE SHOWN IN U.S. SURVEY FEET.  
BEARINGS ARE FOR TIE REFERENCE PURPOSES ONLY.

Statements of evidence relative to this corner are on the following page.

I hereby certify that this document was prepared by me or under my direct supervision and that I am a duly Licensed Land Surveyor under the laws of the State of Minnesota.

Daniel D. Baar      9-25-13  
Daniel D. Baar      Date  
Minnesota License No. 45816

County Surveyor       Land Surveyor  
 Deputy County Surveyor

OFFICE OF COUNTY SURVEYOR  
County of Ramsey

I hereby certify that this document was filed in the County Surveyor's office this 25th day of September, 20 13.

Craig W. Hinzman  
Craig W. Hinzman, L.S.  
Ramsey County Surveyor

# MONUMENT 646

North Quarter Corner of Section 12, Township 28 North, Range 22 West.

Set 1/4 Section Corner, Black Oak 14 N35°W 63; Bur Oak 14 S21°E 67,  
October 24, 1847.

In establishing the 1/4 Corner between Sections 1 and 12, found old stake,  
Government trees gone, fixed Corner and tied it, June 30, 1897; set monument,  
August 12, 1897.

Found granite monument flush and tied, August 2, 1974.

Checked monument, September 22, 1988.

Retied granite monument, up 1 ft.; set sign and post 5.2 ft. northeast of granite  
monument, August 28, 1996.

Retied monument, October 6, 2006.

Found 8 in. by 8 in. granite monument up 0.75 feet leaning easterly +/-0.5 ft. (No  
ties remained from October 6, 2006 ties), May 7, 2013.

Based on historical reference tie comparisons to an Oak tree dating back to 1939, it  
appears the granite monument was disturbed (and the Oak reference tie destroyed)  
sometime after October 2006.

October 1939 tie to 6 in. Oak = 31.70.

October 2006 tie to 12 in. Oak = 31.73.

The undisturbed granite monument was located by conventional survey traverse  
methods, and coordinates established, as part of the county wide traverse in  
+/-1990. Analyzed, checked and tied into the conventional survey traverse network  
to verify the published coordinates of the monument prior to being disturbed.  
Straightened and reset granite monument to coordinate location prior to being  
disturbed and established reference ties as shown hereon, May 8, 2013.

Checked position of straightened monument relative to 1990 traverse points using  
static GPS, May 10, 2013.