

MONUMENT 63

CERTIFICATE OF LOCATION OF GOVERNMENT CORNER

Northeast Corner of Section 12, Township 30 North, Range 23 West, County of Ramsey, State of Minnesota.

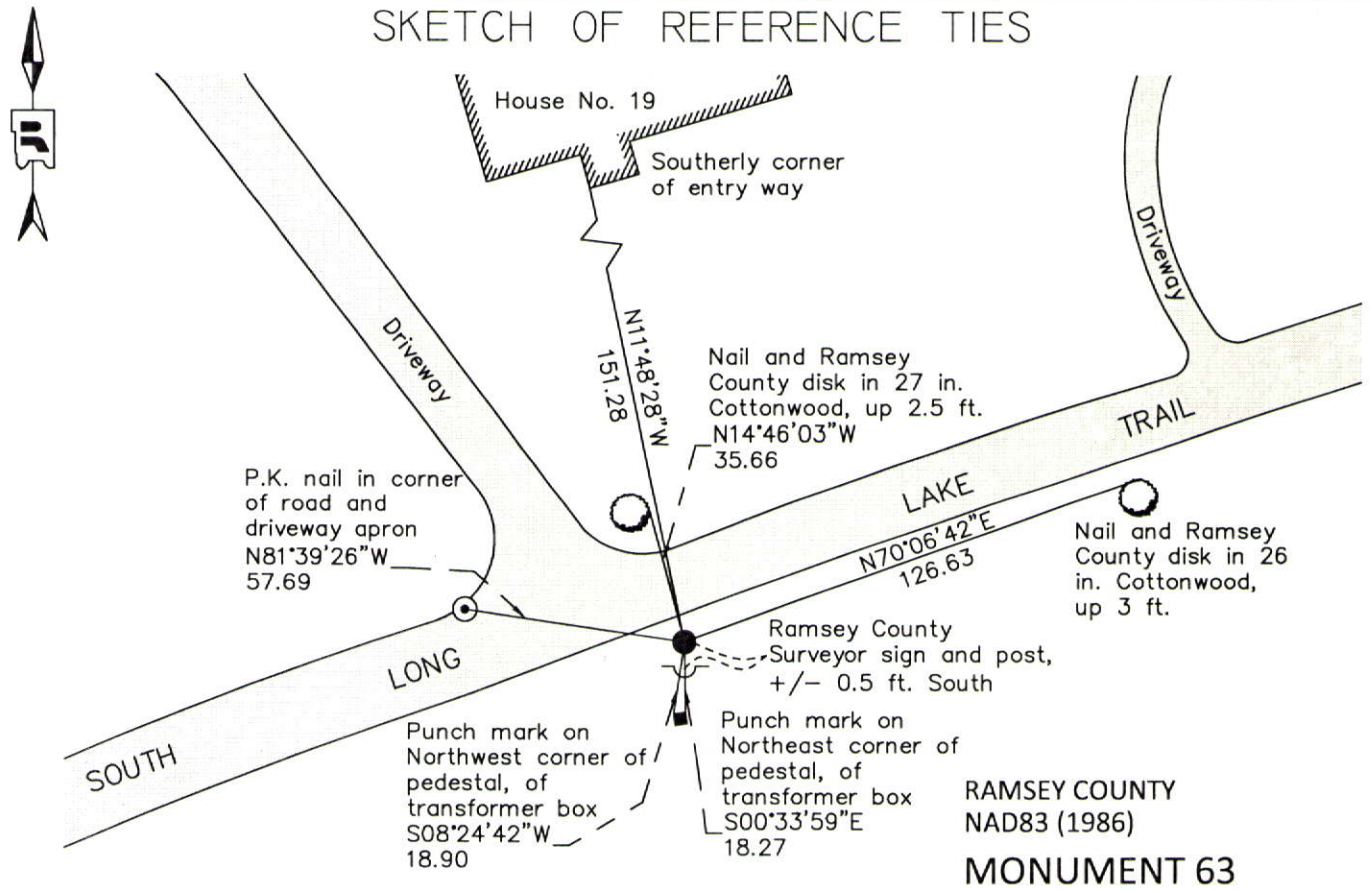
At the corner location shown on the sketch

On July 20, 2012 found a 3/4 in. inner diameter open iron pipe, down 0.4 ft in grassy area.

left monument as found raised/lowered monument removed monument (explain)

On _____ placed a _____

SKETCH OF REFERENCE TIES



ALL DISTANCES ARE SHOWN IN U.S. SURVEY FEET.
BEARINGS ARE FOR TIE REFERENCE PURPOSES ONLY.

RAMSEY COUNTY
NAD83 (1986)
MONUMENT 63
 X= 571396.151 (Easting)
 Y= 215786.448 (Northing)

Statements of evidence relative to this corner are on the following page.

I hereby certify that this document was prepared by me or under my direct supervision and that I am a duly Licensed Land Surveyor under the laws of the State of Minnesota.

Daniel D. Baar 12-30-14
 Daniel D. Baar Date
 Minnesota License No. 45816

County Surveyor
 Deputy County Surveyor Land Surveyor

OFFICE OF COUNTY SURVEYOR
 County of Ramsey

I hereby certify that this document was filed in the County Surveyor's office this 30th day of December, 20 14.

Craig W. Hinzman
 Craig W. Hinzman, L.S.
 Ramsey County Surveyor

MONUMENT 63

Northeast Corner of Section 12, Township 30 North, Range 23 West

Set post at Corner to Sections 1, 6, 7, & 12, B. Oak 8 S10°E 16, B. Oak 18 N16°E 50, B. Oak 10 S25°W 45, B. Oak 8 S25°W 9, October 19, 1847.

In establishing NE cor., E 1/4 cor., SE cor., Meander Corners #1, #2, and #3, ran straight line North along Range Line between Ranges 22 and 23 from SE cor. of Sec. 13 to E 1/4 of Sec. 1. Government witness trees gone. Established corners by single proportionment between the known corners mentioned above, February 1, 1950.

Found an iron in concrete, 1985.

Tied monument, April 14, 1987.

Set sign and post and retied monument, July 18, 2001.

Retied monument, June 29, 2007.

Checked 3/4 in. open iron pipe in concrete and tie conditions, July 20, 2012.