

# MONUMENT 621

## CERTIFICATE OF LOCATION OF GOVERNMENT CORNER

Center of Section 2, Township 28 North, Range 22 West, County of Ramsey,  
State of Minnesota.

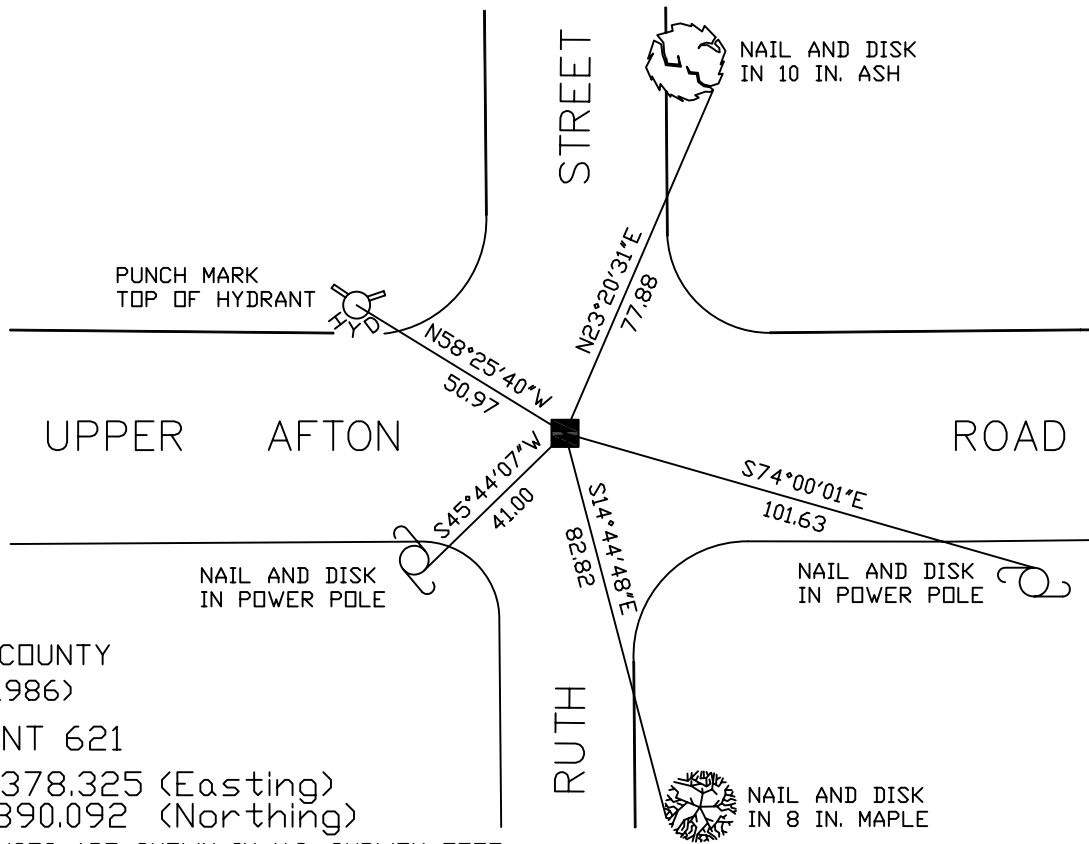
At the corner location shown on the sketch

On August 4, 2006 found a granite monument within a cast iron manhole  
assembly.

left monument as found     lowered monument     removed monument (explain)

On \_\_\_\_\_ placed a \_\_\_\_\_

### SKETCH OF REFERENCE TIES



RAMSEY COUNTY  
NAD83 (1986)  
MONUMENT 621

X = 595378.325 (Easting)  
Y = 154890.092 (Northing)

ALL DISTANCES ARE SHOWN IN U.S. SURVEY FEET.  
BEARINGS ARE FOR TIE REFERENCE PURPOSES ONLY.

Statements of evidence relative to this corner are on the following page(s).

I hereby certify that this document and the data contained herein was prepared by me or under my direct supervision this \_\_\_\_\_ day of \_\_\_\_\_, 20\_\_\_\_.

SIGNATURE

Minnesota License No. \_\_\_\_\_

- County Surveyor  
 Deputy County Surveyor     Land Surveyor

OFFICE OF COUNTY SURVEYOR  
County of Ramsey

I hereby certify that this document was filed in the County Surveyor's office on the \_\_\_\_ day of \_\_\_\_\_, 20\_\_\_\_.

David D. Claypool, P.L.S., County Surveyor

By \_\_\_\_\_, Deputy

# MONUMENT 621

Found a short cast iron monument over a granite monument, down +/- 8 inches. Granite monument location is 0.03 ft. east of cast iron monument; tied granite monument, May 18, 1998.

Placed a 12 in. cast iron manhole assembly over granite monument, September 23, 1998.

Retied monument, August 4, 2006.