

MONUMENT 61

CERTIFICATE OF LOCATION OF GOVERNMENT CORNER

Northeast Corner of Section 11, Township 30 North, Range 23 West, County of Ramsey, State of Minnesota.

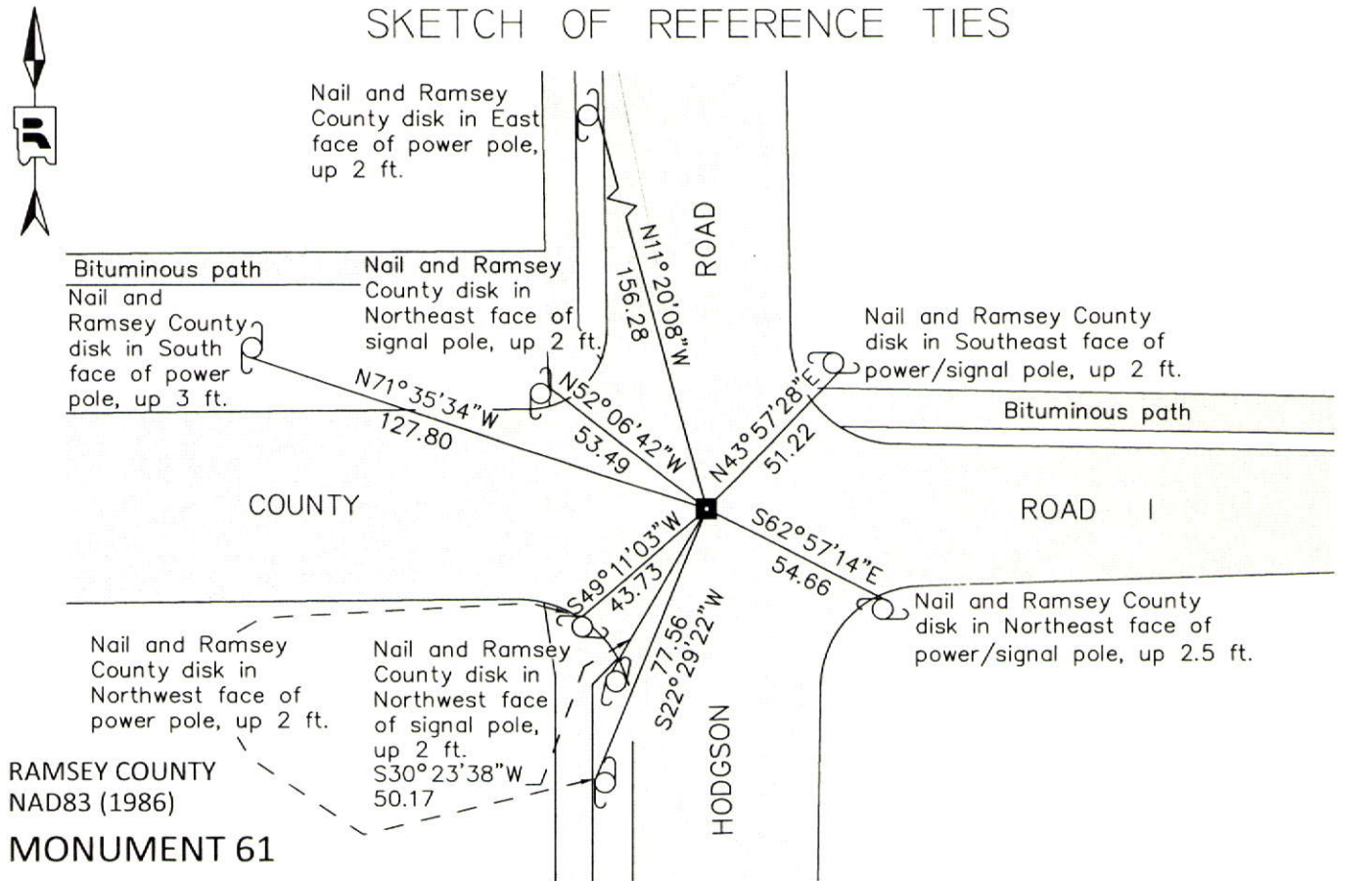
At the corner location shown on the sketch

On August 25, 2014 found a "RAMSEY COUNTY" cast iron monument in bituminous road, down 0.3 ft.

left monument as found raised/lowered monument removed monument (explain)

On August 25, 2014 Removed cast iron monument. Found an 8 inch by 8 inch granite monument down 0.8 feet. Installed a cast iron manhole assembly over granite monument and tied out.

SKETCH OF REFERENCE TIES



ALL DISTANCES ARE SHOWN IN U.S. SURVEY FEET. BEARINGS ARE FOR TIE REFERENCE PURPOSES ONLY.

Statements of evidence relative to this corner are on the following page.

I hereby certify that this document was prepared by me or under my direct supervision and that I am a duly Licensed Land Surveyor under the laws of the State of Minnesota.

Daniel D. Baar 12-16-14
Daniel D. Baar Date
Minnesota License No. 45816

County Surveyor Land Surveyor
 Deputy County Surveyor

OFFICE OF COUNTY SURVEYOR
County of Ramsey

I hereby certify that this document was filed in the County Surveyor's office this 16th day of December, 20 14.

Craig W. Hinzman
Craig W. Hinzman, L.S.
Ramsey County Surveyor

MONUMENT 61

Northeast Corner of Section 11, Township 30 North, Range 23 West

December 16, 1847	Set post corner to Sections 1, 2, 11, & 12, B. Oak 10 S54°E 74, "Do" (B. Oak) 11 N55°W 118, Isaac Higbee, Deputy Surveyor.
July 20, 1896	In establishing the Northeast Corner of Section 11, Government witness tree standing, fixed corner and retied, Ramsey County Resurvey.
August 9, 1897	Set monument, Ramsey County Resurvey.
December, 1943	Checked monument, Ramsey County Engineer's Office.
January, 1946	Checked monument, Ramsey County Engineer's Office.
March, 1952	Checked monument, Ramsey County Engineer's Office.
February, 1954	Checked monument, Ramsey County Engineer's Office.
July 24, 1975	Found a granite monument, down 0.59 ft.; placed a short (4-5/8 in.) cast iron monument, Ramsey County Surveyor's Office.
January 23, 1976	Tied monument, Ramsey County Surveyor's Office.
February 14, 1992	Retied monument, Ramsey County Surveyor's Office.
July 1, 2003	Retied monument, Ramsey County Surveyor's Office.
October 3, 2008	Retied monument, Ramsey County Surveyor's Office.
April 30, 2013	Checked "RAMSEY COUNTY" cast iron monument in bituminous road, down 0.3 ft., and checked condition of local ties, Ramsey County Surveyor's Office.
May 14, 2014	Tied out cast iron monument for removal during road reconstruction, Ramsey County Surveyor's Office
August 25, 2014	Removed cast iron monument. Found an 8inch by 8 inch granite monument down 0.8 feet. Installed a cast iron manhole assembly over granite monument. Retied monument, Ramsey County Surveyor's Office.