

CERTIFICATE OF LOCATION OF GOVERNMENT CORNER

Northeast Corner of Section 2, Township 28 North, Range 23 West, County of Ramsey, State of Minnesota.

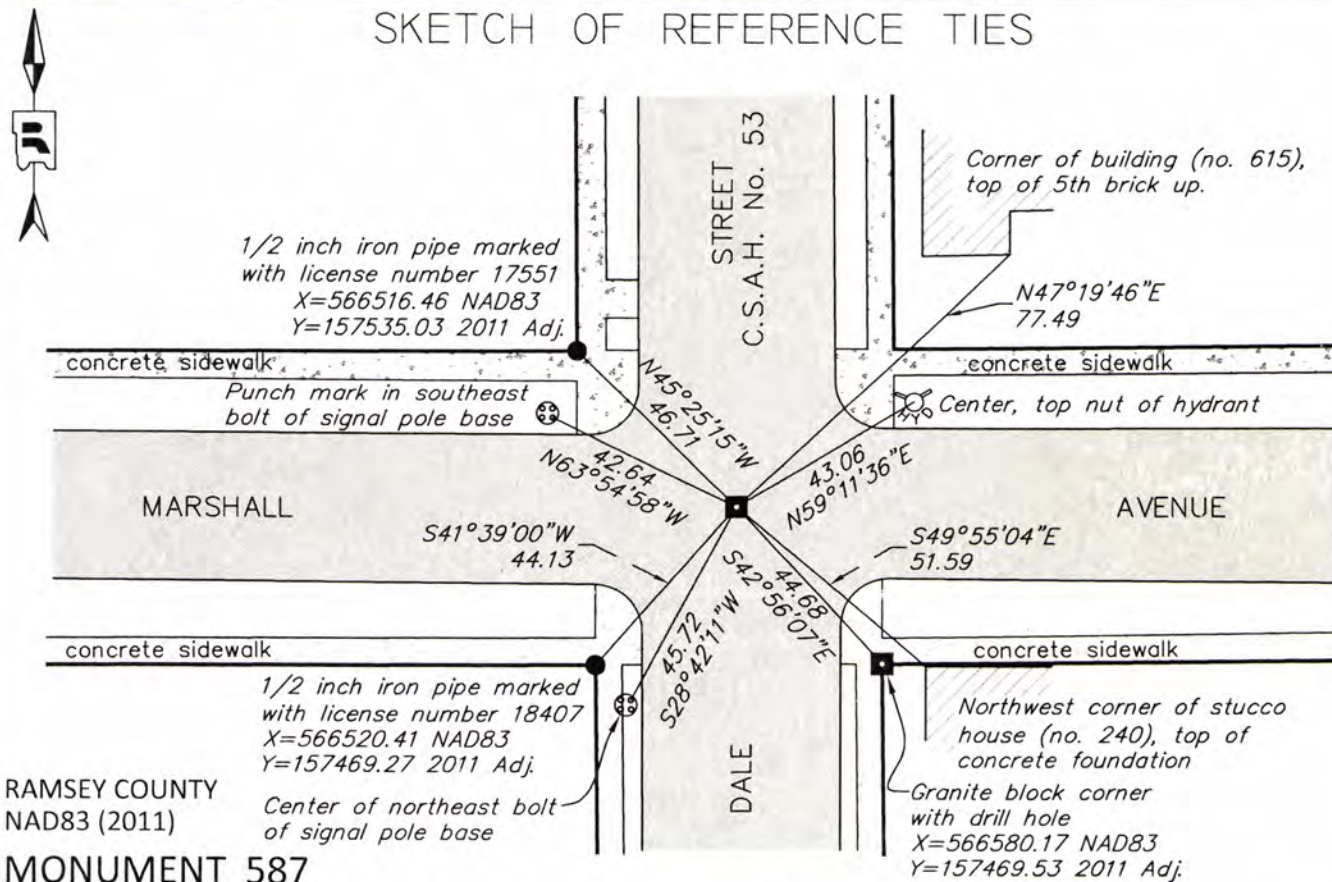
At the corner location shown on the sketch

On May 26, 2016 found a granite monument with a drill hole, down 0.5 feet, in bituminous road.

left monument as found raised/lowered monument removed monument (explain)

On _____ located _____

SKETCH OF REFERENCE TIES



RAMSEY COUNTY
NAD83 (2011)

MONUMENT 587

X= 566549.735 (Easting)
Y= 157502.245 (Northing)

ALL DISTANCES ARE SHOWN IN U.S. SURVEY FEET.
BEARINGS ARE FOR TIE REFERENCE PURPOSES ONLY.

Statements of evidence relative to this corner are on the following page.

I hereby certify that this survey, plan, or report was prepared by me or under my direct supervision, that I am a duly Licensed Land Surveyor under the laws of the state of Minnesota, and that this certificate is correct and complete to the best of my knowledge and belief.

Daniel D. Baar 9-12-16
Date
Daniel D. Baar
Deputy County Surveyor
Minnesota License No. 45816

OFFICE OF COUNTY SURVEYOR
County of Ramsey

I hereby certify that this document was filed in the County Surveyor's office this 12th day of September, 20 16.

Craig W. Hinzman
Craig W. Hinzman, L.S.
Ramsey County Surveyor

MONUMENT 587

Northeast Corner of Section 2, Township 28, Range 23

- October 7, 1847 Set post as corner to sections 1, 2, 35 & 36. (Br Oak 12 N26°E 5, Br Oak 13 S45°E 7, Br Oak 13 S28°W 6) James M. Marsh, Deputy Surveyor
- August 13, 1883 Plat of SWIFT'S SUB'D'N OF LOTS 10 & 11 SMITH AND LOTT'S' OUT LOTS shows a "stone monument" at this position
- June 30, 1972 Found granite monument and patched around manhole. See FB 1689A pg. 21
City of Saint Paul Surveyor's Office
- March 1, 1987 Found granite monument 0.2 feet below grade. Exact day in March, 1987 unknown.
City of Saint Paul Surveyor's Office
- March 25, 1993 Found granite monument 0.3 feet below grade. Left as found. Placed ties. See CofL 0135-0101-A. City of Saint Paul Surveyor's Office
- June 3, 1993 Used granite monument for traverse control. See FB 1549L pg. 14
City of Saint Paul Surveyor's Office
- September 21, 1995 Found granite monument. Marked for painting target for 1995 aerial.
City of Saint Paul Surveyor's Office
- March 1, 2000 Found granite monument 0.35 feet below grade. Placed 4 2' straddles. Marked for painting target for 2000 aerial. Exact day in March, 2000 unknown. City of Saint Paul Surveyor's Office
- October 1, 2013 Unable to locate monument after street was milled. Anecdotal evidence put its location below milling level. 5 out of 6 tie objects remain in place. (Hydrant in NE corner has been replaced.) City of Saint Paul Surveyor's Office
- May 26, 2016 Exposed granite monument with drill hole, down 0.5 feet, in bituminous roadway. Measured ties and reference monuments. (Building corner ties from historic certificates of location were unable to be measured due to vegetation growth). Ramsey County Surveyor's Office