

MONUMENT 578

CERTIFICATE OF LOCATION OF GOVERNMENT CORNER

East Quarter Corner of Section 36, Township 29 North, Range 22 West, County of Ramsey, State of Minnesota.

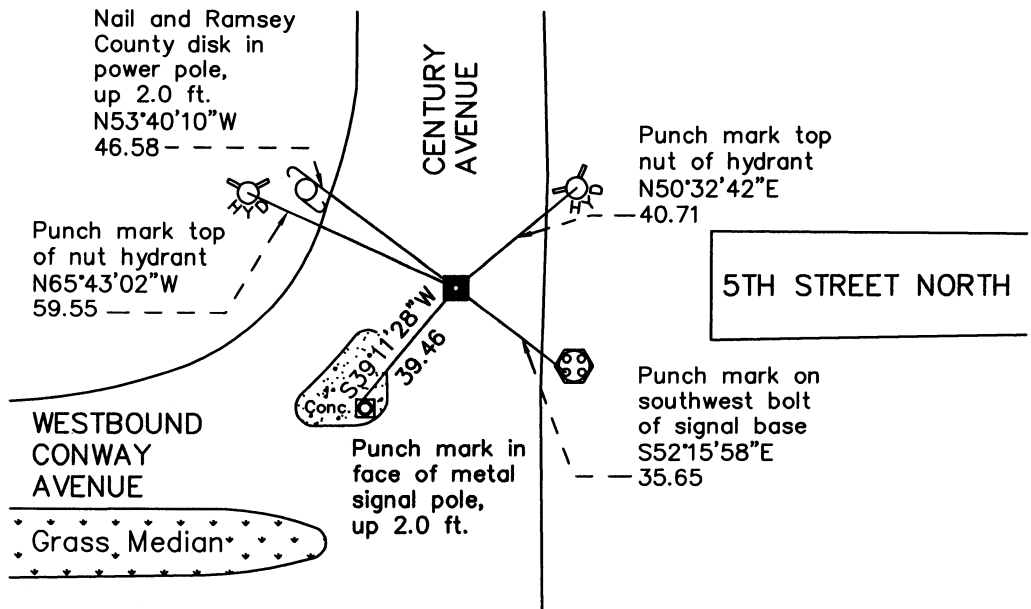
At the corner location shown on the sketch

On June 7, 2011 found a granite monument, within a cast iron manhole assembly.

left monument as found raised/lowered monument removed monument (explain)

On _____ placed a _____

SKETCH OF REFERENCE TIES



RAMSEY COUNTY
NAD83 (1986)

MONUMENT 578

X= 603201.172 (Easting)
Y= 160362.358 (Northing)

ALL DISTANCES ARE SHOWN IN U.S. SURVEY FEET.
BEARINGS ARE FOR TIE REFERENCE PURPOSES ONLY.

Statements of evidence relative to this corner are on the following page.

I hereby certify that this document was prepared by me or under my direct supervision and that I am a duly Licensed Land Surveyor under the laws of the State of Minnesota.

Daniel D. Baar 9-6-12
Daniel D. Baar Date
Minnesota License No. 45816

County Surveyor Land Surveyor
 Deputy County Surveyor

OFFICE OF COUNTY SURVEYOR
County of Ramsey

I hereby certify that this document was filed in the County Surveyor's office this 5th day of September, 2012.

Craig W. Hinzman
Craig W. Hinzman, L.S.
Ramsey County Surveyor

MONUMENT 578

East Quarter Corner of Section 36, Township 29 North, Range 22 West

Set post at qr. Section corner, W.Oak 8 N66°W 40, Blk. Oak 8 S50°E 12, October 15, 1847.

In establishing the 1/4 Corner on east side of Section 36, ran straight line from Northeast Corner to Southeast Corner of Section 36, and fixed 1/4 Corner 1/2 way, Government Witness trees gone, June 24, 1897; set monument August 11, 1897.

Found a granite monument down 6 1/2 in; placed a short (4 5/8 in.) cast iron monument, July 8, 1975.

Tied monument, February 20, 1976.

Retied monument, down 0.17 ft., September 24, 1993.

Monument down 2 in., October 1, 1999.

Removed short cast iron monument and placed a cast iron manhole assembly over granite monument, down 0.9 ft., June 28, 2005.

Tied monument, July 20, 2006.

Retied granite monument, within a cast iron manhole assembly, June 7, 2011.