

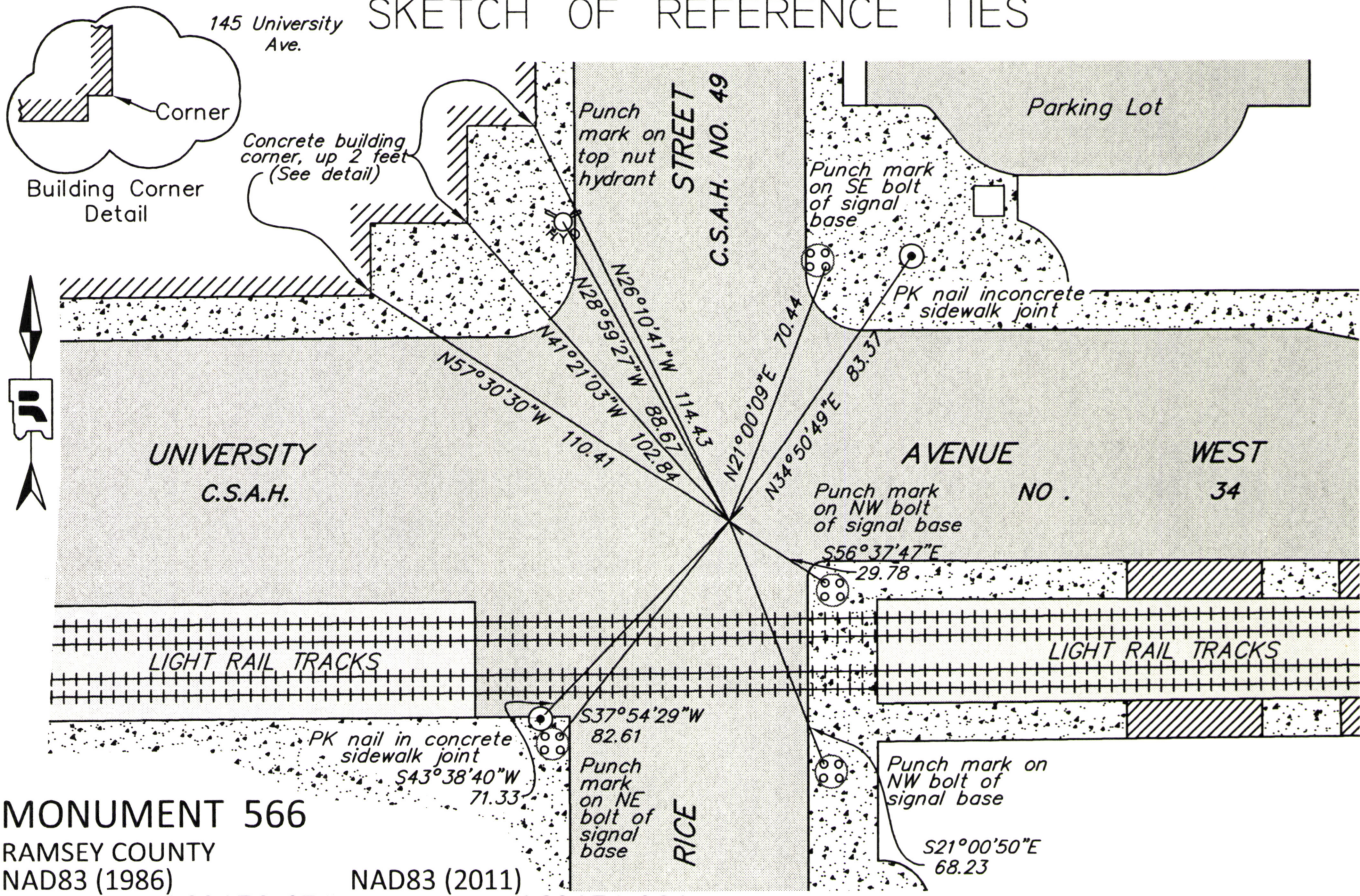
CERTIFICATE OF LOCATION OF PERPETUATED MONUMENT

East Quarter Corner of Section 36, Township 29 North, Range 23 West, County of Ramsey, State of Minnesota.

At the corner location shown on the sketch

- On September 14, 2016 found and located reference ties remaining from Certificate of Location signed by Michael Murphy, dated 11-29-04
- left monument as found raised/lowered monument removed monument (explain)
- On February 2, 2017 placed new reference ties placed for perpetuated monument position by using Static GPS positions on PK nails.

SKETCH OF REFERENCE TIES



MONUMENT 566

RAMSEY COUNTY
 NAD83 (1986) NAD83 (2011)
 Northing = 160170.671 Northing = 160171.281
 Easting = 571823.169 Easting = 571822.827

ALL DISTANCES ARE SHOWN IN U.S. SURVEY FEET.
 BEARINGS ARE FOR TIE REFERENCE PURPOSES ONLY.

Statements of evidence relative to this corner are on the following page.

I hereby certify that this survey, plan, or report was prepared by me or under my direct supervision, that I am a duly Licensed Land Surveyor under the laws of the state of Minnesota, and that this certificate is correct and complete to the best of my knowledge and belief.

Daniel D. Baar 7-17-17
 Daniel D. Baar Date
 Deputy County Surveyor
 Minnesota License No. 45816

OFFICE OF COUNTY SURVEYOR
 County of Ramsey

I hereby certify that this document was filed in the County Surveyor's office this 17th day of July, 20 17.

Craig W. Hinzman
 Craig W. Hinzman, L.S.
 Ramsey County Surveyor

MONUMENT 566

City Index No. 0116

	East Quarter Corner of Section 36, Township 29, Range 23
October 8, 1847	Set post at Quarter Section Corner. Lind 19N68E 119; Lind 17N69W 132. James M. Marsh, Deputy Surveyor
February 16, 1972	Monument out per notes at the St. Paul Surveyor's Office
March, 1991	Found granite monument 0.6 feet below street grade. City of St. Paul Surveyor's Office
March 13, 1991	Found granite monument 0.5 feet below asphalt street grade. Placed ties. City of St. Paul Surveyor's Office
March, 2000	Placed PK nail from coordinates and marked as target for 2000 aerial imagery. City of St. Paul Surveyor's Office
March 7, 2002	Placed elevation on PK nail at asphalt surface. City of St. Paul Surveyor's Office
November 6, 2004	Photos taken before placing casting. City of St. Paul Surveyor's Office
November 13, 2004	Placed casting over granite monument. Granite monument 0.44 feet below street grade. Placed ties. City of St. Paul Surveyor's Office
November 20, 2004	Photos taken after placing casting over granite monument. City of St. Paul Surveyor's Office
January 11, 2005	Position on granite monument established by RTK-VRS GPS. City of St. Paul Surveyor's Office
March 15, 2006	Position on granite monument established by RTK-VRS GPS. City of St. Paul Surveyor's Office
September 14, 2016	University Avenue has been completely reconstructed and two light rail tracks have been constructed down University Avenue. The Ramsey County Surveyor's Office located the remaining reference ties shown on the Certificate of location signed by Michael Murphy on November 29, 2004. A least squares adjustment was completed to re-establish the former position of this monument. The computed position was compared to pre-construction measurements taken by MN/DOT and the Metropolitan Council prior to construction of the light rail. These comparisons concurred with the new computed position. The new position also concurred with County record distances to adjacent PLSS monuments. Ramsey County Surveyor's Office
February 2, 2017	Set new ties to perpetuated position using Static GPS positions on the PK nails in concrete joints. These positions can and should be used to determine the position of the obliterated monument. The actual position of this corner cannot be monumented as it falls in an impractical and unsafe location. Ramsey County Surveyor's Office