

MONUMENT 564

CERTIFICATE OF LOCATION OF PERPETUATED MONUMENT

East Quarter Corner of Section 35, Township 29 North, Range 23 West, County of Ramsey, State of Minnesota.

At the corner location shown on the sketch

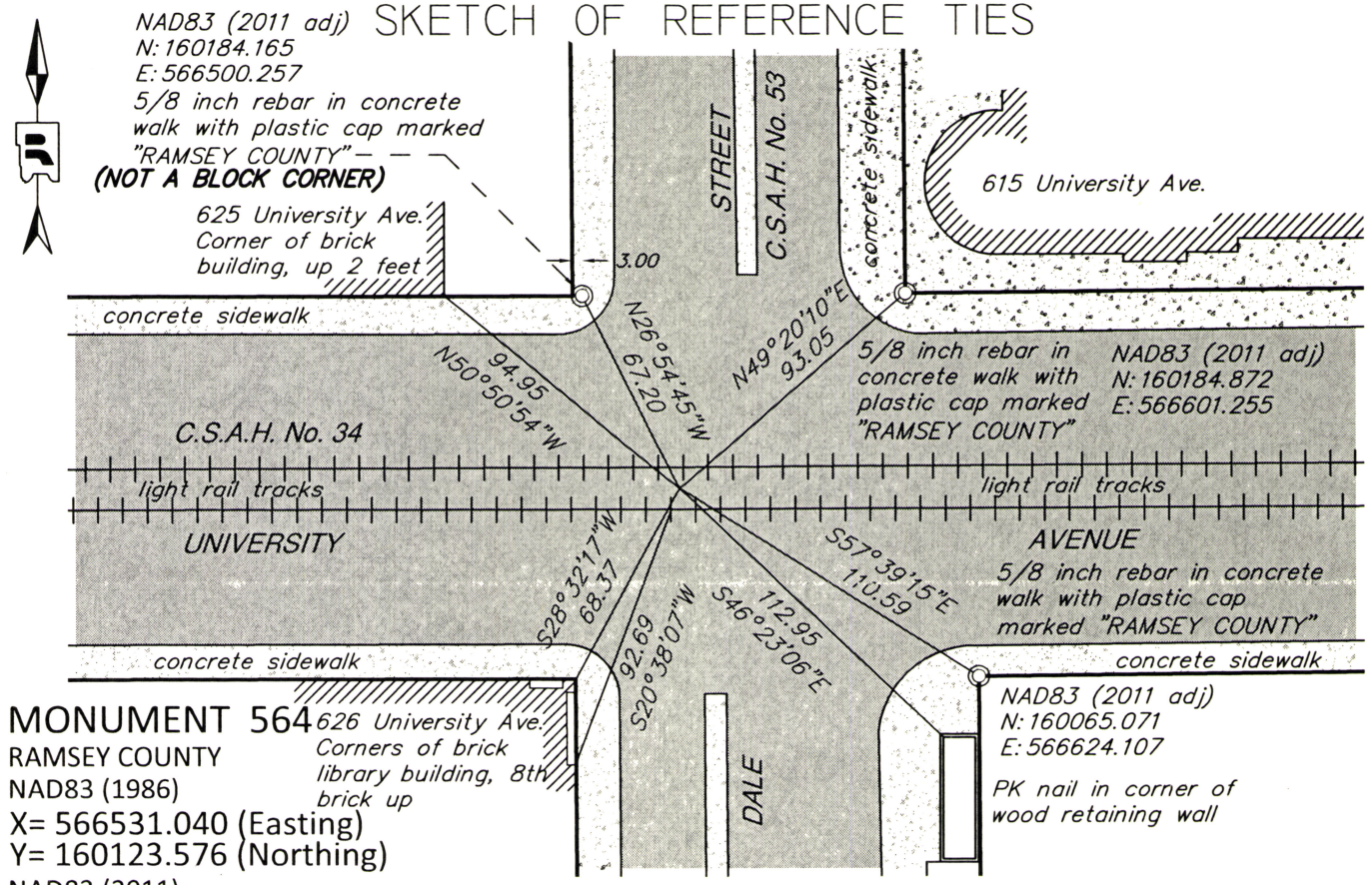
On August 17, 2015 found and located reference ties remaining from Certificate of Location

signed by Michael Murphy, dated 3-17-06

left monument as found raised/lowered monument removed monument (explain)

On August 17, 2015 placed 3 reference monuments and measured local reference ties.

SKETCH OF REFERENCE TIES



MONUMENT 564
 626 University Ave.
 RAMSEY COUNTY
 NAD83 (1986)
 X= 566531.040 (Easting)
 Y= 160123.576 (Northing)
 NAD83 (2011)
 X= 566530.675 (Easting)
 Y= 160124.241 (Northing)

ALL DISTANCES ARE SHOWN IN U.S. SURVEY FEET.
 BEARINGS ARE FOR TIE REFERENCE PURPOSES ONLY.

Statements of evidence relative to this corner are on the following page.

I hereby certify that this survey, plan, or report was prepared by me or under my direct supervision, that I am a duly Licensed Land Surveyor under the laws of the state of Minnesota, and that this certificate is correct and complete to the best of my knowledge and belief.

Daniel D. Baar 8-11-16
 Daniel D. Baar Date
 Deputy County Surveyor
 Minnesota License No. 45816

OFFICE OF COUNTY SURVEYOR
 County of Ramsey

I hereby certify that this document was filed in the County Surveyor's office this 11th day of August, 20 16.

Craig W. Hinzman
 Craig W. Hinzman, L.S.
 Ramsey County Surveyor

MONUMENT 564

East Quarter Corner of Section 35, Township 29, Range 23

- November, 1847 Set Quarter Section Post, Bur Oak 12 N8°E 243;
Isaac Higbee, Deputy Surveyor
- September, 1886 Notes from St. Paul Surveyor's Office show a stone monument.
- November, 1972 Monument falls on sanitary sewer manhole; St. Paul Surveyor's Office
Note: There is a large gap in the history of this monument. The origin of the position on the manhole is unknown as of the date of this Certificate.
- March, 2002 Placed 4 straddles (offsets) at 2 feet; St. Paul Surveyor's Office
- March 9, 2006 Tied position on manhole. Certificate of location signed by Michael Murphy on March 17, 2006; St. Paul Surveyor's Office
- August 17, 2015 University Avenue has been completely reconstructed and two light rail tracks have been constructed down the center of University Avenue. The Ramsey County Surveyor's Office located the remaining reference ties shown on the Certificate of location signed by Michael Murphy on March 17, 2006. A least squares adjustment was completed to re-establish the former position of this monument. The computed position was compared to measurements taken by MN/DOT and the Metropolitan Council prior to construction of the light rail. These comparisons concurred with the new computed position.
- October 10, 2016 Set 3 reference monuments (5/8 inch rebar with plastic cap marked "RAMSEY COUNTY") in the concrete in the NW, NE and SE quadrants of the intersection. These reference monuments can be used to re-establish the monument position. The actual position of this corner cannot be monumented as it falls in an impracticable and unsafe location.