

MONUMENT 56

CERTIFICATE OF LOCATION OF GOVERNMENT CORNER

North Quarter of Section 9, Township 30 North, Range 23 West, County of Ramsey,
State of Minnesota.

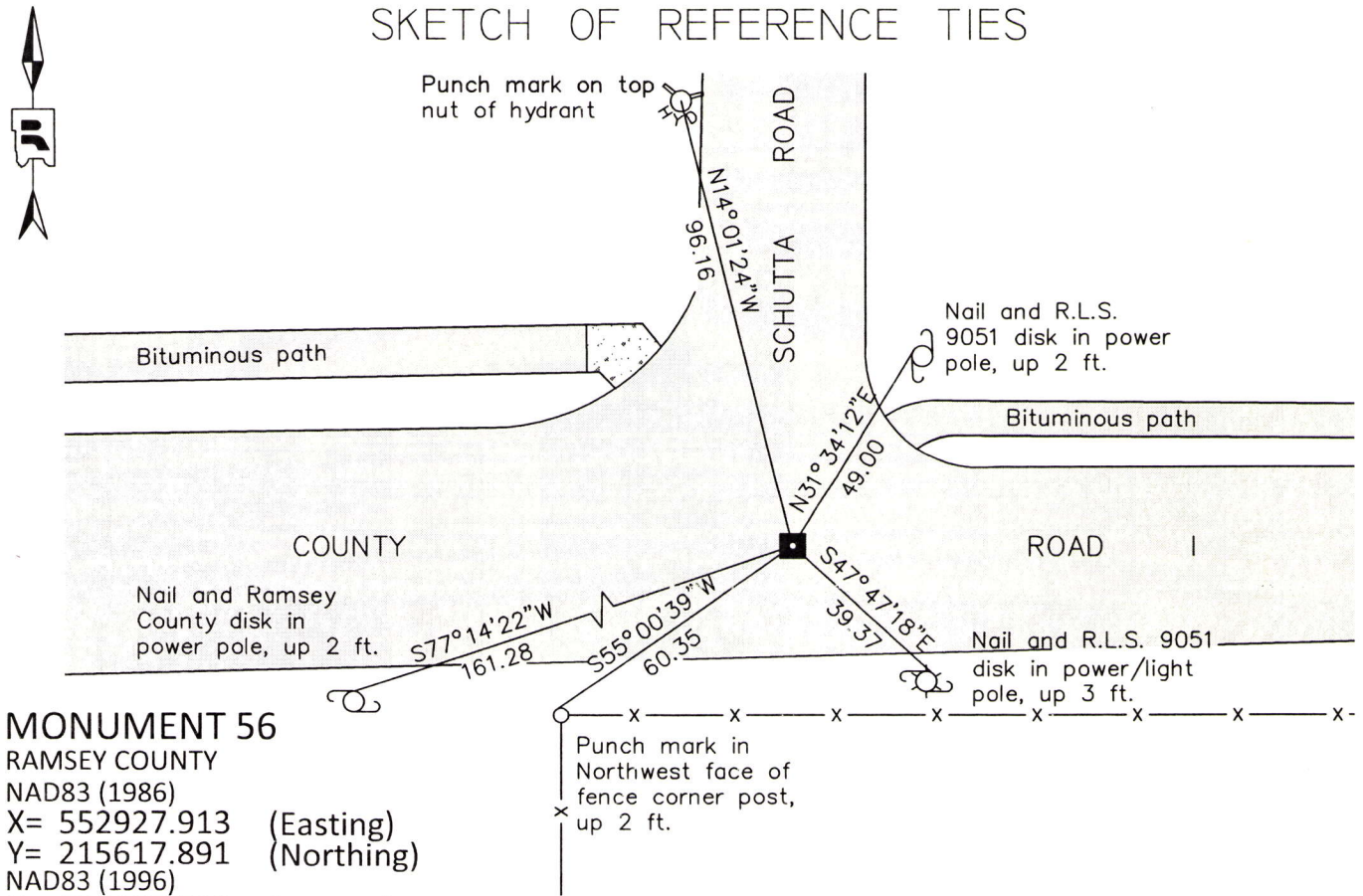
At the corner location shown on the sketch

On June 17, 2014 found an 8 inch square granite monument within a cast iron manhole assembly.

left monument as found
 raised/lowered monument
 removed monument (explain)

On _____ placed a _____

SKETCH OF REFERENCE TIES



MONUMENT 56
 RAMSEY COUNTY
 NAD83 (1986)
 X= 552927.913 (Easting)
 Y= 215617.891 (Northing)
 NAD83 (1996)
 X= 552927.520 (Easting)
 Y= 215618.531 (Northing)

ALL DISTANCES ARE SHOWN IN U.S. SURVEY FEET.
 BEARINGS ARE FOR TIE REFERENCE PURPOSES ONLY.

Statements of evidence relative to this corner are on the following page.

I hereby certify that this survey, plan, or report was prepared by me or under my direct supervision, that I am a duly Licensed Land Surveyor under the laws of the state of Minnesota, and that this certificate is correct and complete to the best of my knowledge and belief.

Daniel D. Baar 6-10-15
 Daniel D. Baar Date
 Deputy County Surveyor
 Minnesota License No. 45816

OFFICE OF COUNTY SURVEYOR
 County of Ramsey

I hereby certify that this document was filed in the County Surveyor's office this 10th day of June, 2015.

Craig W. Hinzman
 Craig W. Hinzman, L.S.
 Ramsey County Surveyor

MONUMENT 56

North Quarter of Section 9, Township 30 North, Range 23 West

December 16, 1847	Set 1/4 Section post, Bur Oak 7 S40°W 11, "Do" (Bur Oak) 7 N2°E 35, Isaac N. Higbee, Deputy Surveyor.
June 16, 1898	In establishing the 1/4 Corner between Sections 4 and 9, ran straight line from Corner to Corner and fixed 1/4 Corner 1/2 way. Government witness trees gone, Ramsey County Resurvey.
July 11, 1898	Set monument, Ramsey County Resurvey.
March, 1952	Checked monument, Ramsey County Surveyor's Office.
October 22, 1975	Found a granite monument down 0.95 ft; set a 10 in. cast iron monument flush, Ramsey County Surveyor's Office.
January 28, 1976	Tied monument, Ramsey County Surveyor's Office.
February 2, 1993	Retied monument, Ramsey County Surveyor's Office.
July 2, 2003	Retied monument, Ramsey County Surveyor's Office.
April 18, 2005	Cast iron monument removed for road milling project, Ramsey County Surveyor's Office.
June 20, 2005	Set cast iron manhole casting over granite monument, Ramsey County Surveyor's Office.
June 21, 2007	Found a granite monument within a cast iron manhole assembly and tied out, Ramsey County Surveyor's Office.
July 17, 2012	Checked granite monument within a manhole assembly and conditions of ties, Ramsey County Surveyor's Office.
June 10, 2014	Performed a static GPS observation, Ramsey County Surveyor's Office.
June 17, 2014	Checked granite monument within a manhole assembly and conditions of ties; performed RTK GPS observations, Ramsey County Surveyor's Office.