

MONUMENT 554

CERTIFICATE OF LOCATION OF GOVERNMENT CORNER

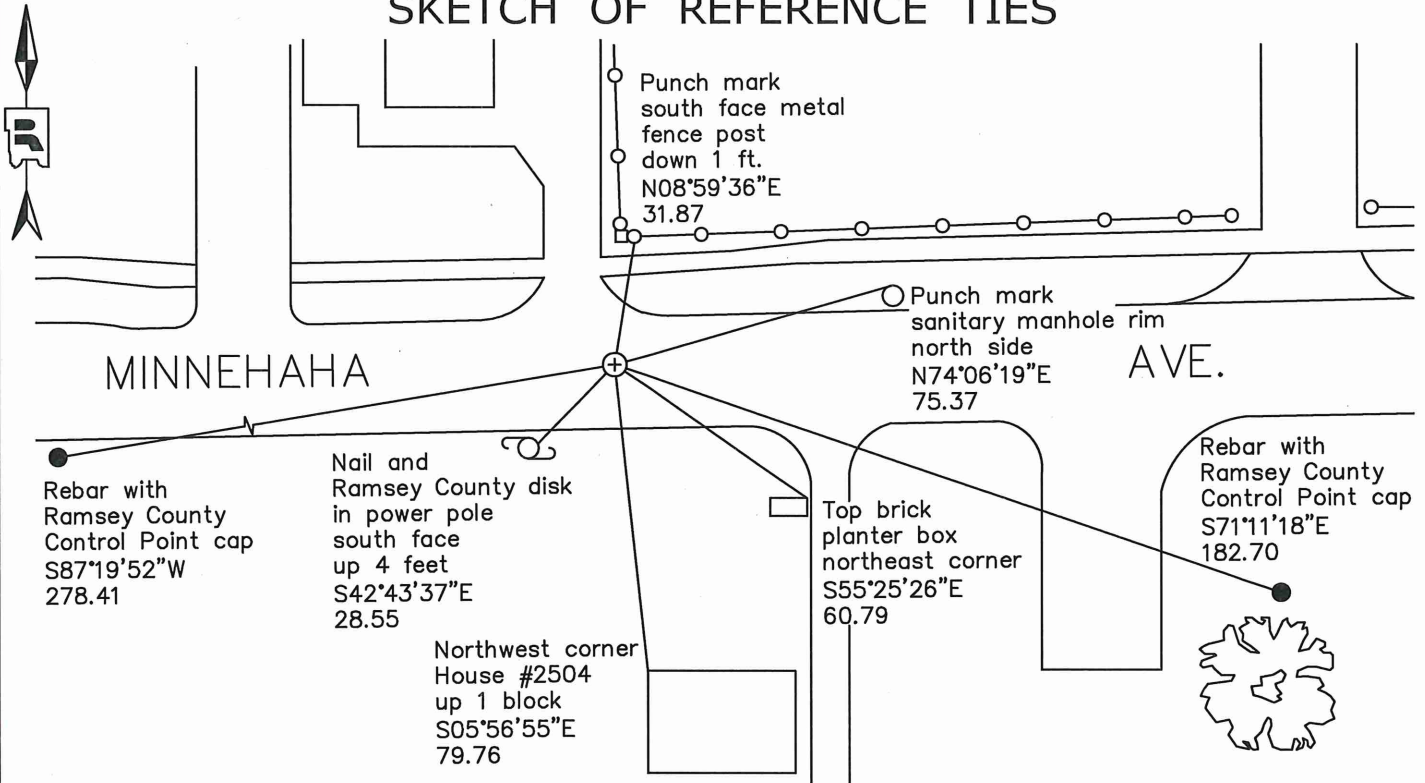
North 1/4 Corner of Section 36, Township 29 North, Range 22 West, County of Ramsey,
State of Minnesota.

At the corner location shown on the sketch

On July 20, 2021 found a "Ramsey County" cast iron monument.

On August 6, 2021 placed a 5/8 inch by 14 inch rebar with 3 inch aluminum cap
stamped " Ramsey County Surveyor".

SKETCH OF REFERENCE TIES



Monument 554
Ramsey County

NAD83 (1986)
Northing = 162956.037
Easting = 600544.214

NAD83 (2011)
Northing = 162956.68
Easting = 600543.84

All distances are shown in U.S. Survey Feet.
Bearings are for tie reference purposes only.

Statements of evidence relative to this corner are on the following page.

I hereby certify that this survey, plan, or report was prepared by me or under my direct supervision, that I am a duly Licensed Land Surveyor under the laws of the state of Minnesota, and that this certificate is correct and complete to the best of my knowledge and belief.

Devin R. Ball 1/27/22

Devin R. Ball
Deputy County Surveyor
Minnesota License No. 56023

OFFICE OF COUNTY SURVEYOR
County of Ramsey

I hereby certify that this document was filed in the County Surveyor's office this 31st day of January, 20 22.

Daniel D. Baar

Daniel D. Baar
Ramsey County Surveyor
Minnesota License No. 45816

MONUMENT 554

North 1/4 Corner of Section 36, Township 29, Range 22

November 24, 1847	Along West Corrected between Sections 25 and 36, at 40.04 1/2 chains set Quarter Section post. B. Oak 20 N40°W 110. Isaac N. Higbee, Deputy Surveyor
June 22, 1897	In establishing the Quarter Corner between Sections 25 and 36, found old stake at Cemetery. Government witness trees gone, fixed corner and tied it. Ramsey County Resurvey
August 11, 1897	Set monument. Ramsey County Resurvey
November 1933	Checked monument. Ramsey County Engineer's Office
December 1966	Checked iron pin. Ramsey County Engineer's Office
August 26, 1976	Found a 2 1/2 in. solid iron, down 4 inches.; dug +/- 4 ft. and found nothing. Set a cast iron monument. Ramsey County Surveyor's Office
April 17, 1990	Tied monument. Ramsey County Surveyor's Office
September 1990	Monument broken by maintenance project. Ramsey County Surveyor's Office
November 2, 1990	Placed a 20 in. cast iron monument. Ramsey County Surveyor's Office.
April 15, 2003	Retied monument, flush. Ramsey County Surveyor's Office
October 27, 2008	Retied monument, down 0.05 ft. Ramsey County Surveyor's Office
April 25, 2013	Found a "Ramsey County" cast iron monument, flush in bituminous road, and inspected local ties. Ramsey County Surveyor's Office
June 30, 2017	Found a cast iron monument, down 0.05 ft. and inspected local ties. Ramsey County Surveyor's Office
July 20, 2021	Found a "Ramsey County" cast iron monument. Established offsets prior to removal during road construction. Ramsey County Surveyor's Office
August 6, 2021	Placed a 5/8 inch by 14 inch rebar with 3 inch aluminum cap stamped "Ramsey County Surveyor" following road construction using offsets. Recorded local ties. Ramsey County Surveyor's Office