

MONUMENT 531

CERTIFICATE OF LOCATION OF FOUND MONUMENT

Center of Section 25, Township 29 North, Range 22 West, County of Ramsey, State of Minnesota.

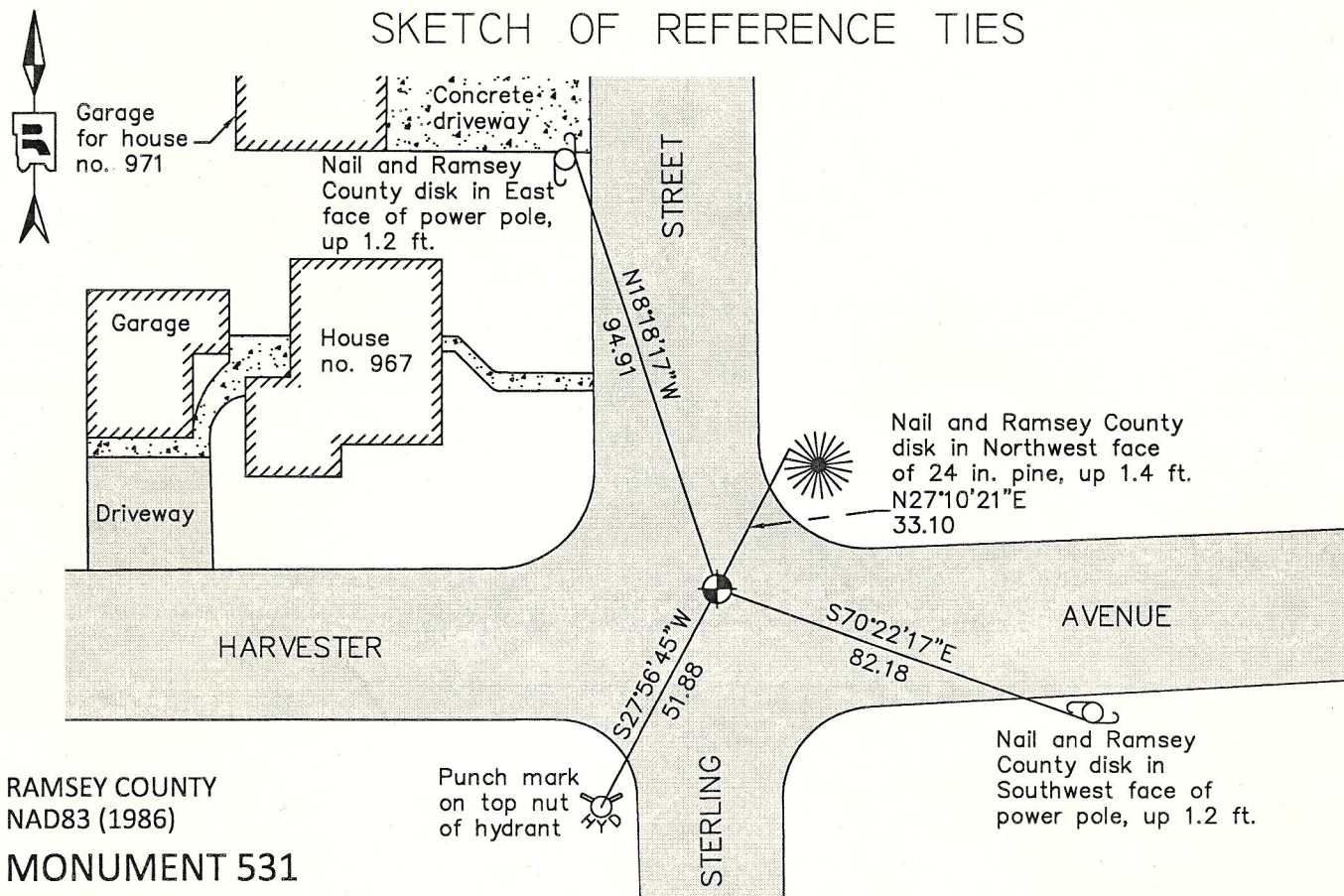
At the corner location shown on the sketch

On June 11, 2012 found a "RAMSEY COUNTY" cast iron monument within a cast iron manhole assembly.

left monument as found raised/lowered monument removed monument (explain)

On _____ placed a _____

SKETCH OF REFERENCE TIES



RAMSEY COUNTY
NAD83 (1986)

MONUMENT 531

X= 600535.656 (Easting)
Y= 165609.084 (Northing)

ALL DISTANCES ARE SHOWN IN U.S. SURVEY FEET.
BEARINGS ARE FOR TIE REFERENCE PURPOSES ONLY.

Statements of evidence relative to this corner are on the following page.

I hereby certify that this document was prepared by me or under my direct supervision and that I am a duly Licensed Land Surveyor under the laws of the State of Minnesota.

Daniel D. Baar 2-20-13
Date
Daniel D. Baar
Minnesota License No. 45816

- County Surveyor
 Deputy County Surveyor Land Surveyor

OFFICE OF COUNTY SURVEYOR
County of Ramsey

I hereby certify that this document was filed in the County Surveyor's office this 20th day of February, 20 13.

Craig W. Hinzman
Craig W. Hinzman, L.S.
Ramsey County Surveyor

MONUMENT 531

Center of Section 25, Township 29 North, Range 22 West

Fixed the Center of Section 25 by intersection and set monument, April, 1900.

Found a 6 in. railroad spike flush; found a 1/2 in. inner diameter by 6 in. long iron, down 0.25 ft.; dug down 4 to 4.5 ft. and found nothing more; placed a 1-1/2 in. diameter by +/-2 ft. long iron temporarily. No date given in field book.

Set a cast iron monument, July 6, 1976.

Tied monument, April 17, 1990.

Reset 20 in. cast iron monument, down 14 in., after City of Maplewood rebuilt streets, September 16, 1999.

Set a cast iron manhole assembly over monument and retied, June 13, 2002.

Retied monument, August 29, 2007.

Checked condition of Cast iron monument within cast iron manhole assembly and ties, June 11, 2012.