

MONUMENT 53

CERTIFICATE OF LOCATION OF FOUND MONUMENT

Northeast Corner of Section 7, Township 30 North, Range 23 West, County of Ramsey, State of Minnesota.

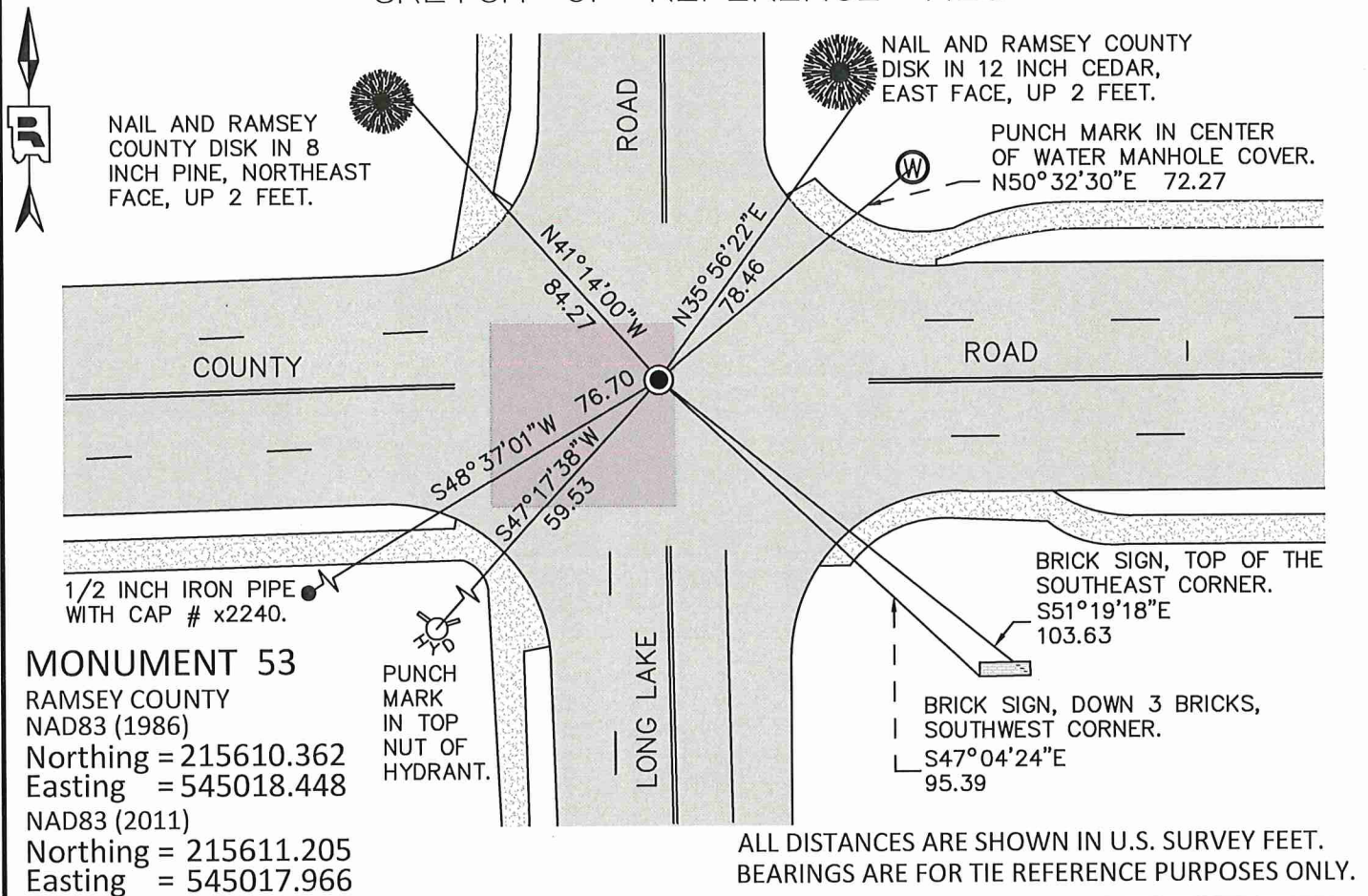
At the corner location shown on the sketch

On _____ found _____

left monument as found raised/lowered monument removed monument (explain)

On August 23, 2017 placed a 14 inch by 5/8 inch rebar with Ramsey County cap using _____ construction offsets.

SKETCH OF REFERENCE TIES



Statements of evidence relative to this corner are on the following page.

I hereby certify that this survey, plan, or report was prepared by me or under my direct supervision, that I am a duly Licensed Land Surveyor under the laws of the state of Minnesota, and that this certificate is correct and complete to the best of my knowledge and belief.

Daniel D. Baar 9-30-21
 Daniel D. Baar Date
 Ramsey County Surveyor
 Minnesota License No. 45816

OFFICE OF COUNTY SURVEYOR
 County of Ramsey

I hereby certify that this document was filed in the County Surveyor's office this 30th day of September, 2021.

Daniel D. Baar
 Daniel D. Baar, L.S.
 Ramsey County Surveyor

MONUMENT 53

Northeast Corner of Section 7, Township 30, Range 23 West

December 8, 1847	At 80.00 chains set post corner to sections 5,6,7 & 8. Tied to two bearing trees; Bur Oak 14 S47 W74 and Bur Oak 12 N50 E106. Isaac Higbee Deputy Surveyor.
January 21, 1903	In establishing the NW corner of Section 8, prorated North and South, and fixed Section Corner. No Government trees. Set monument. Ramsey County Re-monumentation Survey.
January, 1946	Checked monument. Ramsey County Engineer's Office.
March, 1952	Checked monument. Ramsey County Engineer's Office.
April, 1965	Checked monument. Ramsey County Engineer's Office.
August 8, 1974	Found a cast iron monument, down 0.1 feet and retied. Ramsey County Surveyor's Office.
June 7, 1988	Monument destroyed by construction. Replaced with short 4 5/8 inch cast iron monument and cemented into place. Ramsey County Surveyor's Office.
February 4, 1993	Retied monument. Ramsey County Surveyor's Office.
February 22, 1999	Retied monument. Ramsey County Surveyor's Office.
December 29, 2004	Retied monument. Ramsey County Surveyor's Office.
October 19, 2009	Found a cast iron monument in concrete road, flush. Retied monument. Ramsey County Surveyor's Office.
July 23, 2014	Found a cast iron monument, flush. Checked local ties using Certificate of Location dated October 19, 2009. All ties present and in good condition. Ramsey County Surveyor's Office.
June 10, 2015	Performed Static GPS observation on monument to obtain NAD83 (2011) coordinates. Ramsey County Surveyor's Office.
June 17, 2015	Checked monument. Monument appears to be leaning northerly. Checked ties to see how far monument has moved. Left monument in place. Ramsey County Surveyor's Office.
June 8, 2016	Set monument offsets for upcoming road construction. Ramsey County Surveyor's Office.
Summer, 2016	4 5/8 inch cast iron monument removed by contractor due to road construction. Exact date unknown. Ramsey County Surveyor's Office.
August 23, 2017	Placed a 14 inch by 5/8 inch rebar with Ramsey County cap using construction offsets and tied. Ramsey County Surveyor's Office.
July 27, 2020	Checked monument and ties; all in and in good condition. Ramsey County Surveyor's Office