

MONUMENT 52

CERTIFICATE OF LOCATION OF GOVERNMENT CORNER

South Quarter Corner of Section 6, Township 30 North, Range 23 West, County of Ramsey, State of Minnesota.

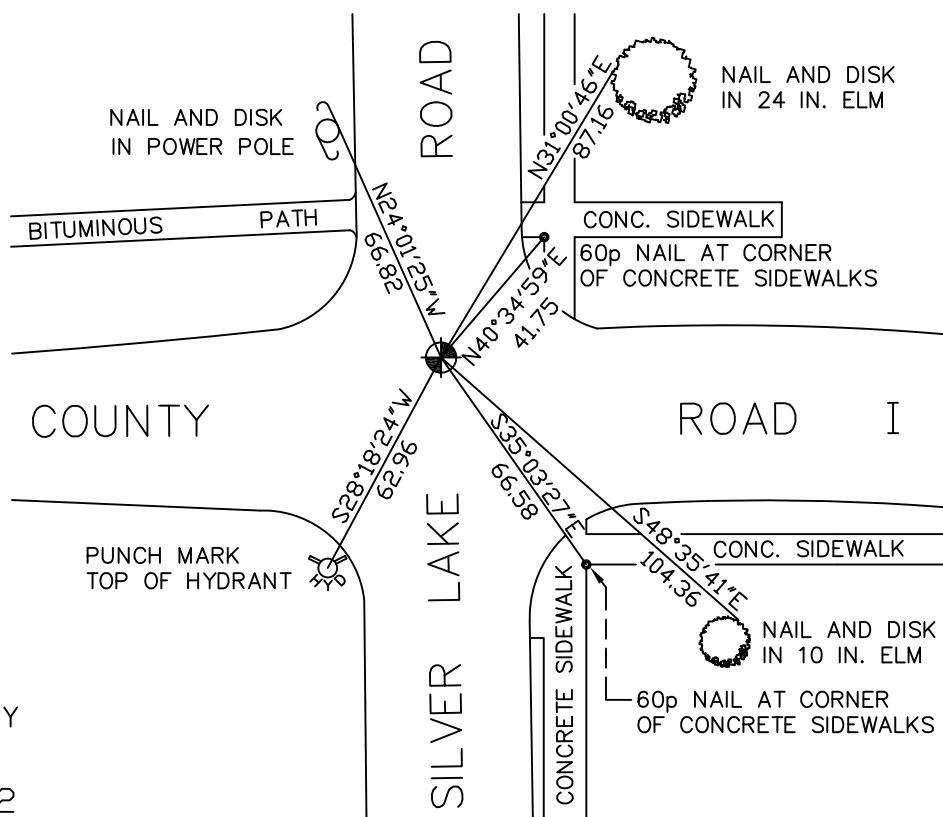
At the corner location shown on the sketch

On October 19, 2009 found a cast iron monument, within a cast iron manhole assembly.

left monument as found lowered monument removed monument (explain)

On _____ placed a _____

SKETCH OF REFERENCE TIES



RAMSEY COUNTY
NAD83 (1986)
MONUMENT 52

X= 542379.123 (Easting)
Y= 215533.516 (Northing)

ALL DISTANCES ARE SHOWN IN U.S. SURVEY FEET.
BEARINGS ARE FOR TIE REFERENCE PURPOSES ONLY.

Statements of evidence relative to this corner are on the following page(s).

I hereby certify that this document and the data contained herein was prepared by me or under my direct supervision this _____ day of _____, 20____.

SIGNATURE

Minnesota License No. _____

- County Surveyor
 Deputy County Surveyor Land Surveyor

OFFICE OF COUNTY SURVEYOR
County of Ramsey

I hereby certify that this document was filed in the County Surveyor's office on the _____ day of _____, 20____.

SIGNATURE

Michael D. Fiebiger, P.L.S.
Ramsey County Surveyor

MONUMENT 52

Found a cast iron monument flush, and retied, August 8, 1974.

Retied monument, down 0.15 ft., February 4, 1993.

Retied monument, September 5, 2003.

Cast iron monument lowered for milling operation, August 3, 2004.

Cast iron manhole assembly was placed over monument, September 1, 2004.

Tied monument, December 29, 2004.

Retied monument, October 19, 2009.