

# MONUMENT 519

## CERTIFICATE OF LOCATION OF FOUND MONUMENT

Center of Section 25, Township 29 North, Range 23 West, County of Ramsey, State of Minnesota.

At the corner location shown on the sketch

On October 14, 2015 found a solid iron rod with the top bent after road mill and overlay.

left monument as found     
  raised/lowered monument     
  removed monument (explain)

On October 15, 2015 placed a 14 in. by 5/8 in. Rebar with cap inscribed "Ramsey County" and tied.

### MONUMENT 519 SKETCH OF REFERENCE TIES

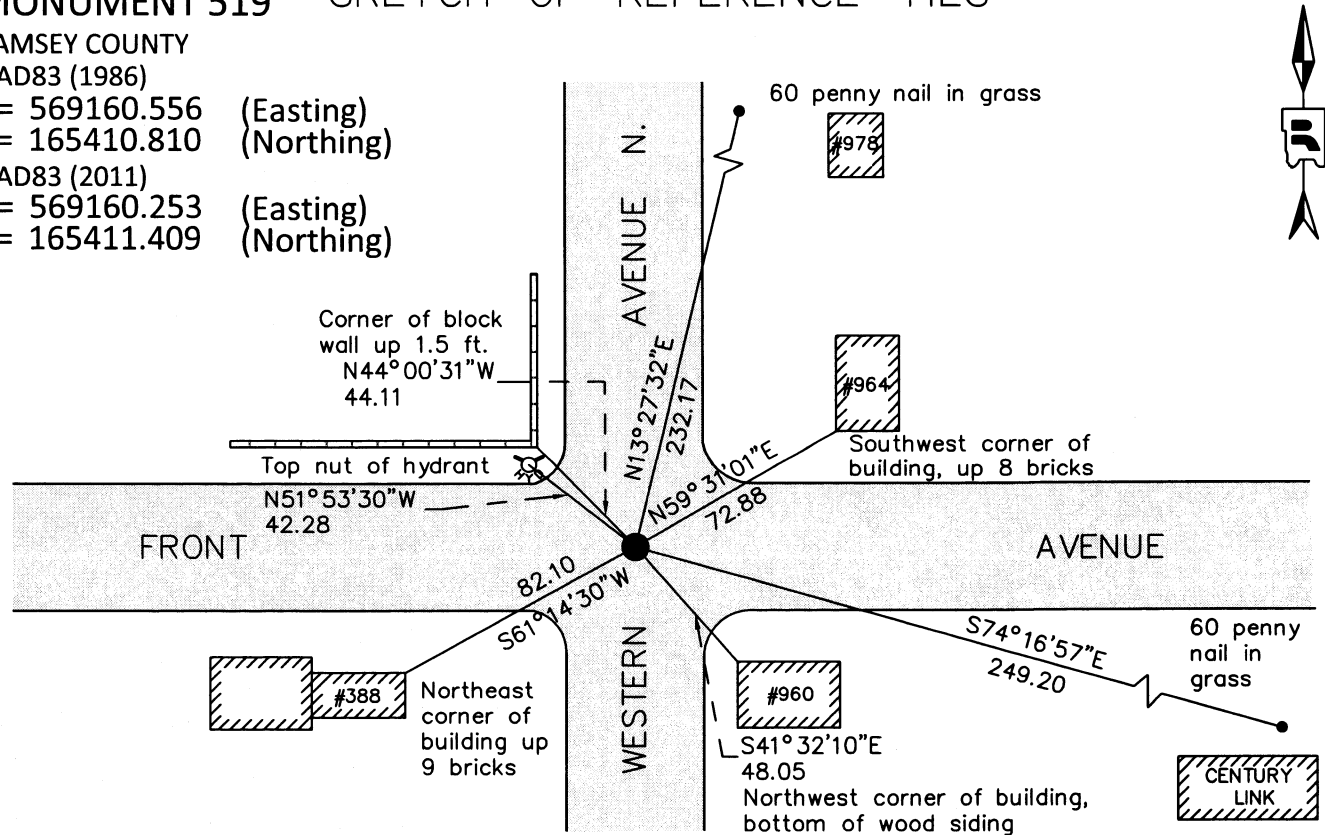
RAMSEY COUNTY

NAD83 (1986)

X= 569160.556 (Easting)  
Y= 165410.810 (Northing)

NAD83 (2011)

X= 569160.253 (Easting)  
Y= 165411.409 (Northing)



ALL DISTANCES ARE SHOWN IN U.S. SURVEY FEET.  
BEARINGS ARE FOR TIE REFERENCE PURPOSES ONLY.

Statements of evidence relative to this corner are on the following page.

I hereby certify that this survey, plan, or report was prepared by me or under my direct supervision, that I am a duly Licensed Land Surveyor under the laws of the state of Minnesota, and that this certificate is correct and complete to the best of my knowledge and belief.

Daniel D. Baar      10-4-16  
 Daniel D. Baar      Date  
 Deputy County Surveyor  
 Minnesota License No. 45816

OFFICE OF COUNTY SURVEYOR  
County of Ramsey

I hereby certify that this document was filed in the County Surveyor's office this 4th day of October, 20 16.

Craig W. Hinzman  
 Craig W. Hinzman, L.S.  
 Ramsey County Surveyor

# MONUMENT 519

Center of Section 25, Township 29 North, Range 23 West

January, 1887	Monument reset by McCoy after grading Western Ave. City of Saint Paul Surveyor's office
April 18, 1972	Three ties checked. Hydrant, house and wall. See FB 1689A pg. 11. City of Saint Paul Surveyor's office
March, 1987	Iron Pin placed to grade. City of Saint Paul Surveyor's office
July, 1991	Found steel pin at grade and tied. See Cofl. 0073-0037-A City of Saint Paul Surveyor's office
September 21, 1995	Found steel pin 3.9' North of centerline sewer manhole. City of Saint Paul Surveyor's office
March, 2000	Found pin at grade. City of Saint Paul Surveyor's office
March 8, 2002	Found iron pin at asphalt surface. See FB 1736 pg. 36 City of Saint Paul Surveyor's Office
August 29, 2002	Used iron pin for traverse control. See FB 1735 pg. 21 City of Saint Paul Surveyor's Office
June 26, 2004	Found iron pin at street grade. Painted pin. Left monument as found. City of Saint Paul Surveyor's Office
May 28, 2015	Found solid iron rod and tied for removal during road reconstruction. Ramsey County Surveyor's Office
October 14, 2015	Found solid iron rod with top bent after road mill and overlay. Ramsey County Surveyor's Office
October 15, 2015	Removed solid iron rod. Replaced with 14 in. by 5/8 in. rebar with cap inscribed "Ramsey County" and tied. Ramsey County Surveyor's Office