

# MONUMENT 517

## CERTIFICATE OF LOCATION OF FOUND MONUMENT

Center of Section 26, Township 29 North, Range 23 West, County of Ramsey, State of Minnesota.

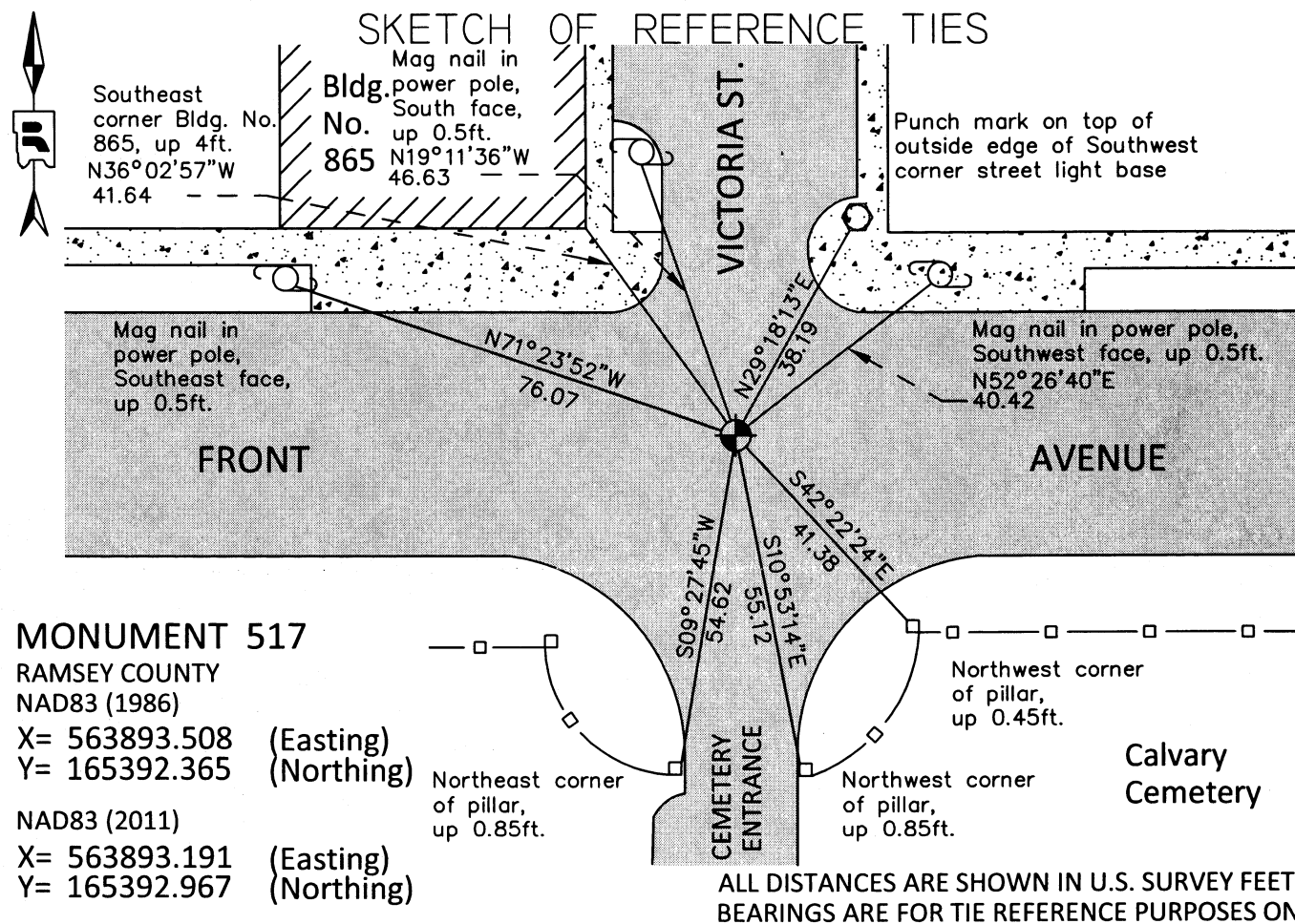
At the corner location shown on the sketch

On July 29, 2014 found a PK nail at street grade.

left monument as found       raised/lowered monument       removed monument (explain)

On October 7, 2015 placed a 20 inch "Ramsey County" cast iron monument.

Cast iron manhole assembly to be set by others during construction.



Statements of evidence relative to this corner are on the following page.

I hereby certify that this survey, plan, or report was prepared by me or under my direct supervision, that I am a duly Licensed Land Surveyor under the laws of the state of Minnesota, and that this certificate is correct and complete to the best of my knowledge and belief.

Daniel D. Baar      10-4-16  
 Daniel D. Baar      Date  
 Deputy County Surveyor  
 Minnesota License No. 45816

OFFICE OF COUNTY SURVEYOR  
 County of Ramsey

I hereby certify that this document was filed in the County Surveyor's office this 4th day of October, 2016.

Craig W. Hinzman  
 Craig W. Hinzman, L.S.  
 Ramsey County Surveyor

# MONUMENT 517

Center of Section 26, Township 29 North, Range 23 West

According to the notes from the City of St. Paul, it is unclear how this monument was set. There are notes from J.B. Irvine showing the center of section in undated field notes.

June 6, 1972	Found Granite Monument 0.6 feet below grade. Set Cast Iron Monument over granite monument. City of St. Paul Surveyor's Office
February, 1987	Found Cast Iron Monument over Granite Monument, under asphalt lift. City of St. Paul Surveyor's Office
September 21, 1995	Found PK straddles. Marked intersection for aerial photography flight. City of St. Paul Surveyor's Office
March, 2000	Placed four 2ft. straddles from ties. Marked as aerial target for 2000 spring flight. City of St. Paul Surveyor's Office
March 6, 2002	Set small PK nail from ties at asphalt surface. City of St. Paul Surveyor's Office
February 1, 2008	Set PK nail by coordinates. Position on PK nail established by GPS RTK-VRS. Photos taken. City of St. Paul Surveyor's Office
October 18, 2011	Found PK nail at street grade. City of St. Paul Surveyor's Office
November 19, 2012	Position of PK nail established using RTK-VRS GPS. EDM ties placed using Sokkia Set 5. City of St. Paul Surveyor's Office
July 29, 2015	Found PK nail at street grade and checked ties established by the City of St. Paul on Certificate of Location dated November 19, 2012. Set construction offsets for removal during road construction. Ramsey County Surveyor's Office
October 7, 2015	Set 20 inch "Ramsey County" cast iron monument; cast iron manhole to be set by others. Monument set using construction offsets and local ties. Retied monument. Performed 50-minute static observation on monument. Ramsey County Surveyor's Office
September 29, 2016	Searched for 1/16th corner monument south of Center of Section, and for monuments at the intersections of railroad right of way and the 1/4 section line south of the Center of Section. Found a 1/2 inch iron pipe with an unreadable plastic cap at the intersection of the southerly railroad right of way line and the 1/4 section line. The Ramsey County NAD83 (2011 adjusted) coordinates of the found monument are: Northing = 163910.97, Easting = 563894.04. Ramsey County Surveyor's Office