

# MONUMENT 5

## CERTIFICATE OF LOCATION OF GOVERNMENT CORNER

**NOTE: TWO LOCATIONS FOR THIS CORNER HAVE BEEN PERPETUATED (SEE BELOW)**

North East Corner of Section 5, Township 30 North, Range 23 West, County of Ramsey, State of Minnesota.

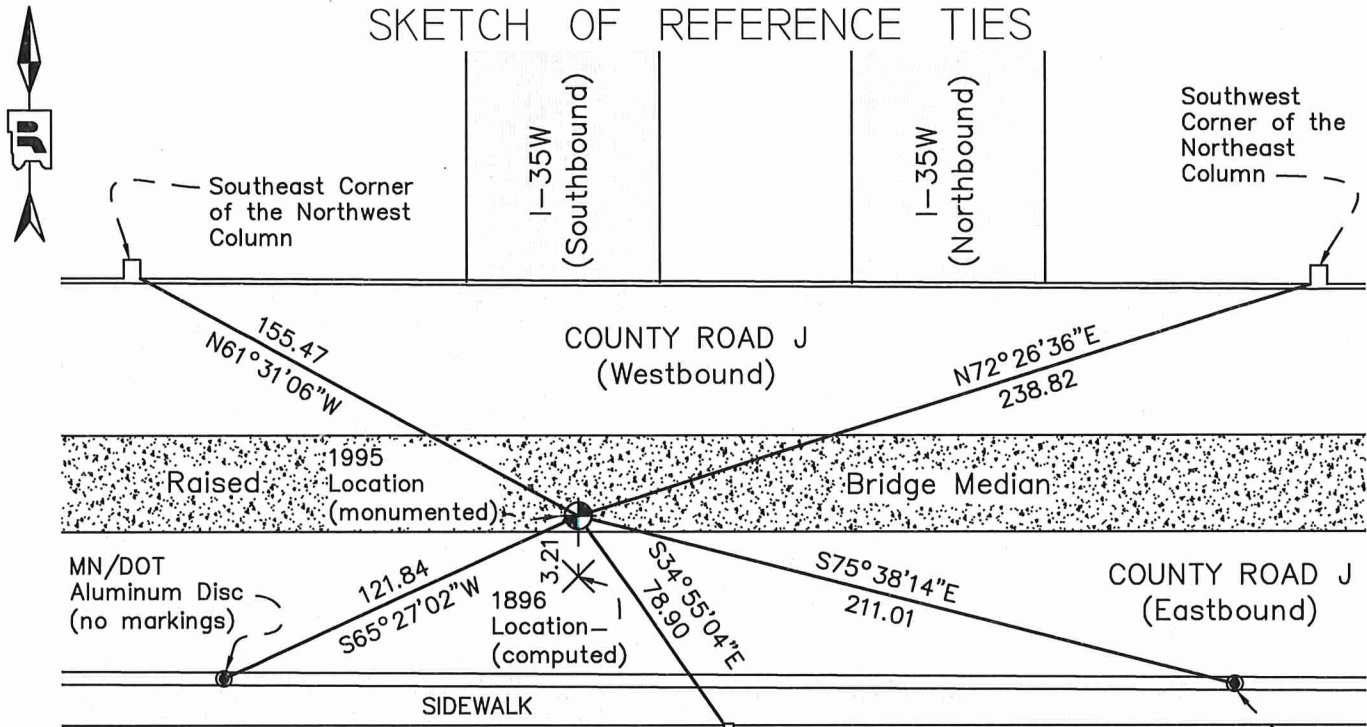
At the corner location shown on the sketch

On \_\_\_\_\_ found \_\_\_\_\_

left monument as found       raised/lowered monument       removed monument (explain)

On August 17, 2011 placed a 4 3/8 inch cast iron monument, flush in raised concrete median.

### SKETCH OF REFERENCE TIES



**MONUMENT 5** 1995 Location  
 NAD83 (1986)  
 X= 550237.473 (Easting)  
 Y= 221564.320 (Northing)  
 NAD83 (2011)  
 X= 550237.009 (Easting)  
 Y= 221565.004 (Northing)

Northwest corner conc. bridge wall pillar, up 8 ft.

MN/DOT Aluminum Disc 0280X 2007

ALL DISTANCES ARE SHOWN IN U.S. SURVEY FEET. BEARINGS ARE FOR TIE REFERENCE PURPOSES ONLY.

Statements of evidence relative to this corner are on the following page.

I hereby certify that this document was prepared by me or under my direct supervision and that I am a duly Licensed Land Surveyor under the laws of the State of Minnesota.

Daniel D. Baar 8/10/12  
 Daniel D. Baar Date  
 Minnesota License No. 45816

- County Surveyor  
 Deputy County Surveyor       Land Surveyor

OFFICE OF COUNTY SURVEYOR  
 County of Ramsey

I hereby certify that this document was filed in the County Surveyor's office this 10<sup>th</sup> day of February, 20 21.

Daniel D. Baar  
 Daniel D. Baar, L.S.  
 Ramsey County Surveyor

## MONUMENT 5

Intersected Third Correction Line, 49.82 chains north of the 1/4 corner between Sections 4 and 5, Township 30, Range 23, 17.30 chains West of the corner to Sections 34 and 35, Township 31, Range 23 and set post corner to Sections 4 and 5, December 12, 1847.

Established the Northeast Corner of Section 5, Township 30, Range 23, August 17, 1896.

Set monument, September 15, 1900

Monument tied, December, 1943.

Monument tied, January, 1946.

Monument tied, November, 1950.

Monument tied, March, 1952.

Minnesota Department of Transportation Right of Way Map Number 4-61 TH 35W shows a granite monument at this location, date unknown.

Minnesota Department of Transportation Right of Way Map Number 17-8 (Supersedes Map 4-61) TH 35W shows a granite monument at this location, date unknown.

Minnesota Department of Transportation Right of Way Map Number 17-9 TH 35W shows a granite monument at this location, October 30, 1961.

Monument tied, October 1965 (last apparent evidence of the physical monument at this location after the construction of TH 35W).

The Ramsey County Surveyor's Office established monuments along the third correction line which placed this section corner 3.21 feet north of the 1896 corner location, 1995.

Set a 4 3/8 inch cast iron monument flush in County Road J bridge deck concrete median (over Interstate 35W) at the computed location (1995) for the Northeast Corner of Section 5, Township 30, Range 23; tied cast iron monument, August 17, 2011.