

MONUMENT 499

CERTIFICATE OF LOCATION OF GOVERNMENT CORNER

Northeast Corner of Section 30, Township 29 North, Range 22 West, County of Ramsey, State of Minnesota.

At the corner location shown on the sketch

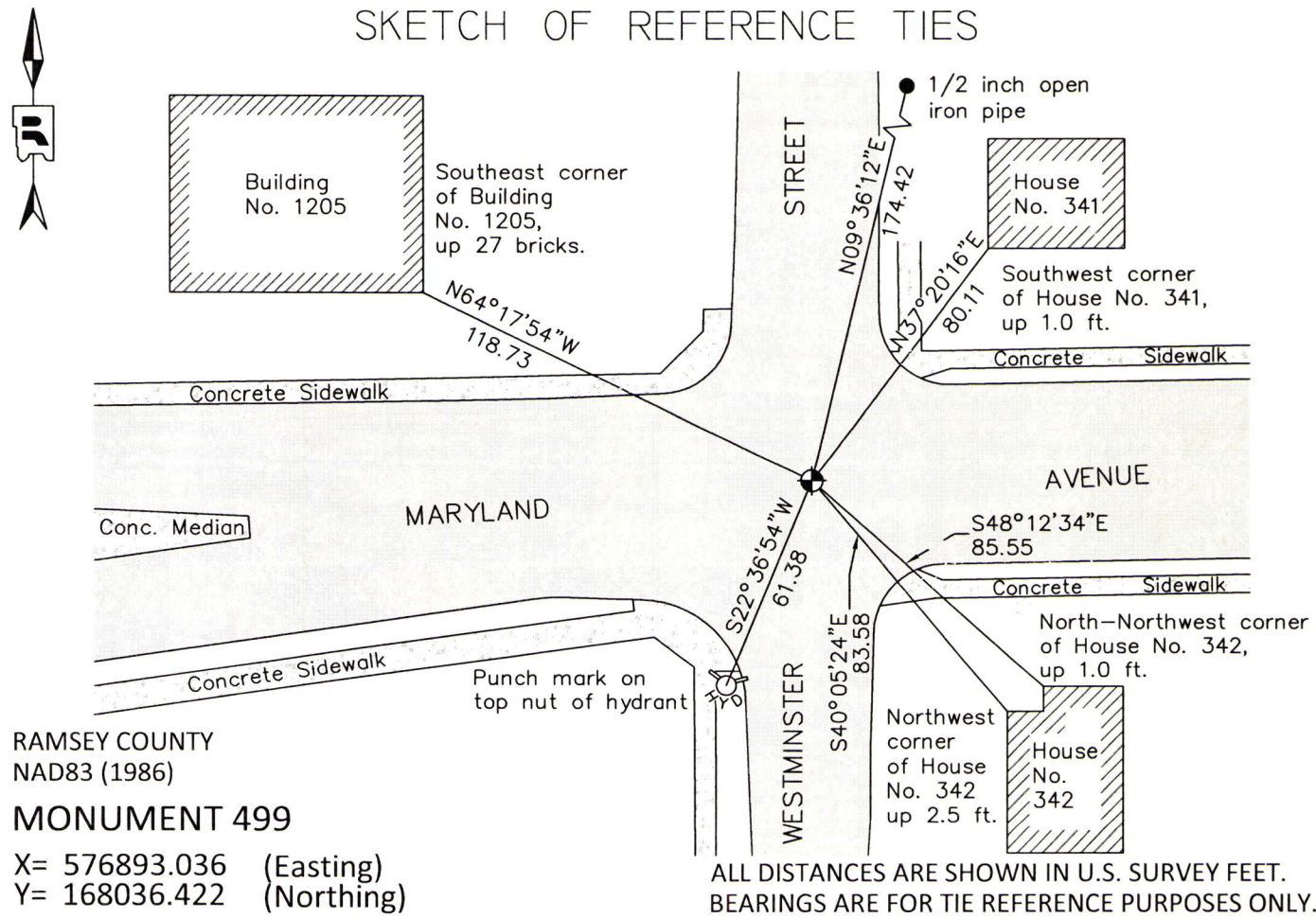
On August 20, 2012 found cast iron monument, down 0.15 ft. in bituminous road.

Tied out monument for removal during road re-construction.

left monument as found raised/lowered monument removed monument (explain)

On October 31, 2013 placed a "Ramsey County" cast iron monument within a cast iron manhole assembly; tied monument.

SKETCH OF REFERENCE TIES



RAMSEY COUNTY
NAD83 (1986)
MONUMENT 499

X= 576893.036 (Easting)
Y= 168036.422 (Northing)

ALL DISTANCES ARE SHOWN IN U.S. SURVEY FEET.
BEARINGS ARE FOR TIE REFERENCE PURPOSES ONLY.

Statements of evidence relative to this corner are on the following page.

I hereby certify that this document was prepared by me or under my direct supervision and that I am a duly Licensed Land Surveyor under the laws of the State of Minnesota.

Daniel D. Baar 12-12-14
Date

Daniel D. Baar
Minnesota License No. 45816

County Surveyor
 Deputy County Surveyor Land Surveyor

OFFICE OF COUNTY SURVEYOR
County of Ramsey

I hereby certify that this document was filed in the County Surveyor's office this 12th day of December, 20 14.

Craig W. Hinzman
Craig W. Hinzman, L.S.
Ramsey County Surveyor

MONUMENT 499

Northeast Corner of Section 30, Township 29 North, Range 22 West

Set post Corner to Sections 19, 20, 29 and 30, Bur Oak 12 S65°E 21, "Do" (Bur Oak) 13 N70°W 52, November 1, 1847.

One bearing tree in, September, 1876. (City of St. Paul Surveyor's Office)

Monument reset J.H. Armstrong after grading of Maryland Street, September 6, 1888. (City of St. Paul Surveyor's Office)

Placed ties on stone monument, November, 1943. (City of St. Paul Surveyor's Office)

Found cast iron monument in place, June 18, 1980. (City of St. Paul Surveyor's Office)

Cast iron monument found with top sheared off, July 1, 1989. (City of St. Paul Surveyor's Office)

Found cast iron monument top broken off, found 2 ft. straddles (marked for painting target for 2000 Aerial), March 17, 2000. (City of St. Paul Surveyor's Office)

Found cast iron monument, August 7, 2000. (City of St. Paul Surveyor's Office)

Found broken cast iron monument 0.14 ft. below asphalt surface, March 28, 2002. (City of St. Paul Surveyor's Office)

City of Saint Paul Surveyor found a broken off cast iron monument 0.10 ft. below asphalt grade with four 2 ft. straddles. Removed broken cast iron monument. Probed 3.5 ft. from street surface, no granite monument found. City of Saint Paul Surveyor placed a cast iron monument stamped "Section Corner" 0.03 ft. below asphalt grade in concrete, July 24, 2004. (City of St. Paul Surveyor's Office)

Tied "Section Corner" cast iron monument, in bituminous road, for removal during road re-construction, August 20, 2012.

Removed "Section Corner" cast iron monument. Placed a new "RAMSEY COUNTY" cast iron monument within a cast iron manhole assembly; tied monument, October 31, 2013.