

# MONUMENT 493

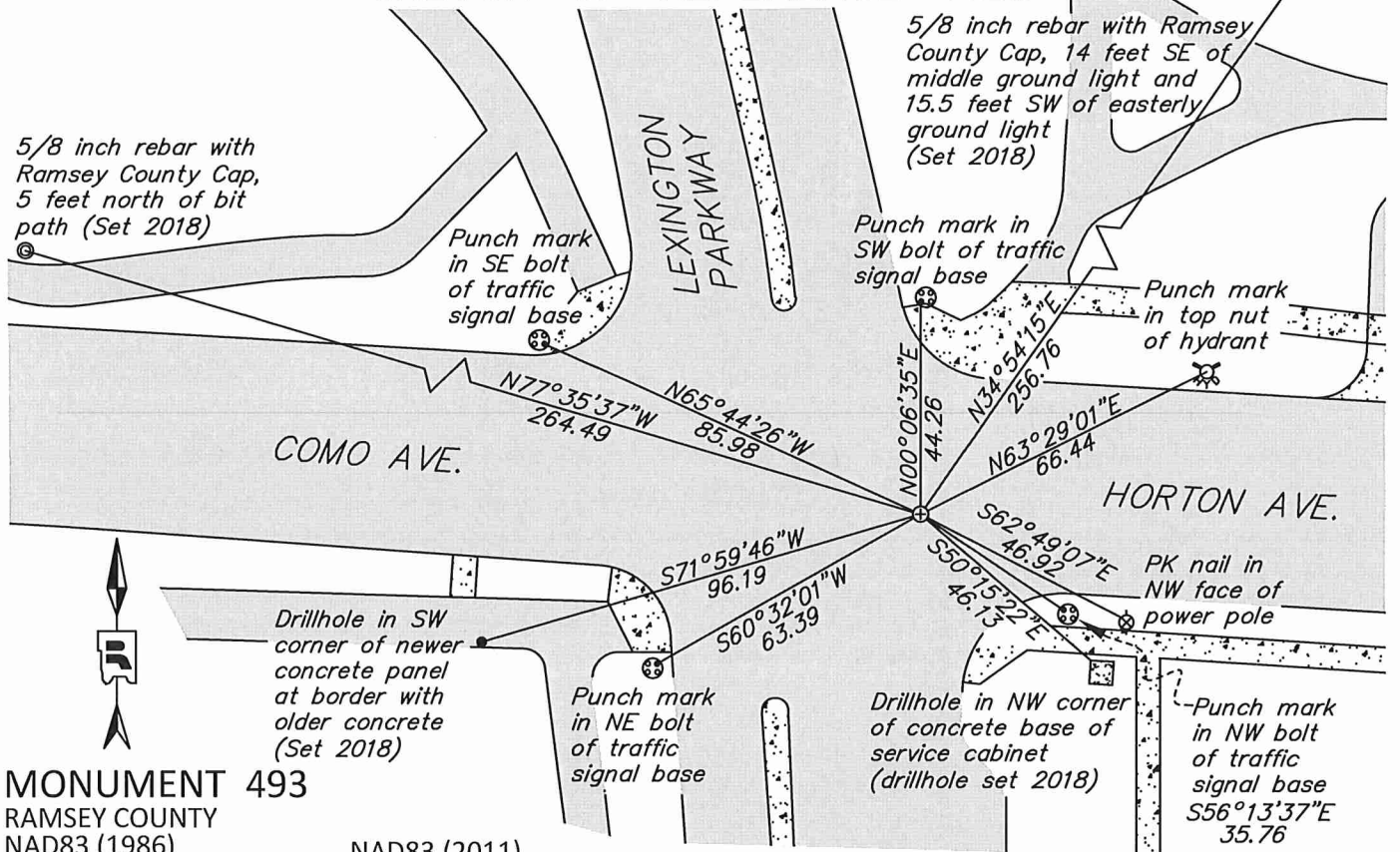
## CERTIFICATE OF LOCATION OF GOVERNMENT CORNER

Northeast Corner of Section 27, Township 29 North, Range 23 West, County of Ramsey, State of Minnesota.

At the corner location shown on the sketch

- On September 13, 2018 found a cast iron monument encased in concrete, down 0.10 feet in bituminous roadway. After checking ties and establishing construction offsets, road contractor removed CIM.
- left monument as found     
  raised/lowered monument     
  removed monument (explain)
- On September 25, 2018 placed a 5/8 inch x 14 inch rebar with 3 inch Aluminum Cap stamped "Ramsey County Surveyor", flush in new bituminous roadway.

### SKETCH OF REFERENCE TIES



**MONUMENT 493**  
 RAMSEY COUNTY  
 NAD83 (1986)      Northing = 168024.25      Easting = 561278.13  
 NAD83 (2011)      Northing = 168024.819      Easting = 561277.723

ALL DISTANCES ARE SHOWN IN U.S. SURVEY FEET. BEARINGS ARE FOR TIE REFERENCE PURPOSES ONLY.

Statements of evidence relative to this corner are on the following page.

I hereby certify that this survey, plan, or report was prepared by me or under my direct supervision, that I am a duly Licensed Land Surveyor under the laws of the state of Minnesota, and that this certificate is correct and complete to the best of my knowledge and belief.

*Daniel D. Baar*      5/20/21  
 Daniel D. Baar      Date  
 Ramsey County Surveyor  
 Minnesota License No. 45816

OFFICE OF COUNTY SURVEYOR  
 County of Ramsey

I hereby certify that this document was filed in the County Surveyor's office this 20<sup>th</sup> day of May, 20 21.

*Daniel D. Baar*  
 Daniel D. Baar, L.S.  
 Ramsey County Surveyor

# MONUMENT 493

Northeast Corner of Section 27, Township 29N, Range 23W

- |                    |   |
|--------------------|---|
| November 1, 1847   | At 80.00 chains, while running north between Sections 26 and 27, set post corner to Sections 22, 23, 26, and 27. Bur Oak 10-inch N19°E 3.47, Bur Oak 12-inch N84°W 2.43. Isaac N Higbee, Deputy Surveyor.                               |
| November 1, 1847   | At 79.81 chains, while running west corrected between Sections 23 and 26, arrived at Section Corner. Isaac N Higbee, Deputy Surveyor.   |
| March 21, 1870     | Bearing Stump in. City of Saint Paul Surveyor's Office  |
| August 18, 1889    | Monument set after grading by Chas Hunt. See Old Index Book, Entry 9. City of Saint Paul Surveyor's Office  |
| August 19, 1889    | Monument reset after grading by Chas Hunt. City of Saint Paul Surveyor's Office   |
| October 1972       | CIM set in concrete base, approximately 5 feet west of MH. Yellow Tie Book. City of Saint Paul Surveyor's Office. Exact date unknown.   |
| February 1984      | Placed iron pin at correct Section Corner location. Used ties from FB 1470 p.19. PK is 0.8 feet west and 0.3 feet north of present CIM location. W. Cutting. Yellow Tie Book. City of Saint Paul Surveyor's Office. Exact date unknown. |
| February 24, 1987  | Found Iron pin. W.C. Yellow Tie Book. City of Saint Paul Surveyor's Office  |
| 1988               | New full monument. D.K. Yellow Tie Book. City of Saint Paul Surveyor's Office. Exact date unknown.  |
| September 1992     | Recovered CIM. City of Saint Paul Surveyor's Office. Exact date unknown.  |
| September 19, 1995 | Recovered CIM 0.10 ft. below grade & placed ties. See CofL 0049-0009-A. City of Saint Paul Surveyor's Office  |
| September 21, 1995 | Found CIM (marked for painting target for 1995 aerial). City of Saint Paul Surveyor's Office  |
| March 22, 1996     | Found and Painted CIM 0.10 feet below grade. RW, KM, and PL. Yellow Tie Book. City of Saint Paul Surveyor's Office  |
| March 17, 2000     | Found CIM 0.10 feet below grade (marked for painting target for 2000 aerial). City of Saint Paul Surveyor's Office  |
| March 6, 2002      | Found CIM 0.12 feet below asphalt surface. Used for level run. See FB 1736 p.34. City of Saint Paul Surveyor's Office   |
| July 9, 2009       | Sewer Department found CIM 0.2 feet below grade when performing sewer maintenance. City of Saint Paul Surveyor's Office   |

# MONUMENT 493

Northeast Corner of Section 27, Township 29N, Range 23W

- |                    |   |
|--------------------|---|
| December 10, 2015  | Found a Cast Iron Monument down 0.2 feet. Field personnel occupied CIM and performed static GPS observation to establish NAD83 (2011 Adj.) Horizontal Control. Ramsey County Surveyor's Office  |
| September 13, 2018 | Found Cast Iron Monument encased in concrete in bituminous road, down 0.10 feet. Checked ties using City of St. Paul Certificate of Location (0049-0009-A) and established offsets prior to removal during road construction. Ramsey County Surveyor's Office |
| September 25, 2018 | Placed a 5/8 inch x 14 inch rebar with 3 inch Aluminum Cap stamped "Ramsey County Surveyor", flush in new bituminous roadway using construction offsets and recorded ties. Ramsey County Surveyor's Office  |