

MONUMENT 485S

CERTIFICATE OF LOCATION OF GOVERNMENT CORNER

Witness Monument to the Center of Section 24, Township 29 North, Range 22 West, County of Ramsey, State of Minnesota.

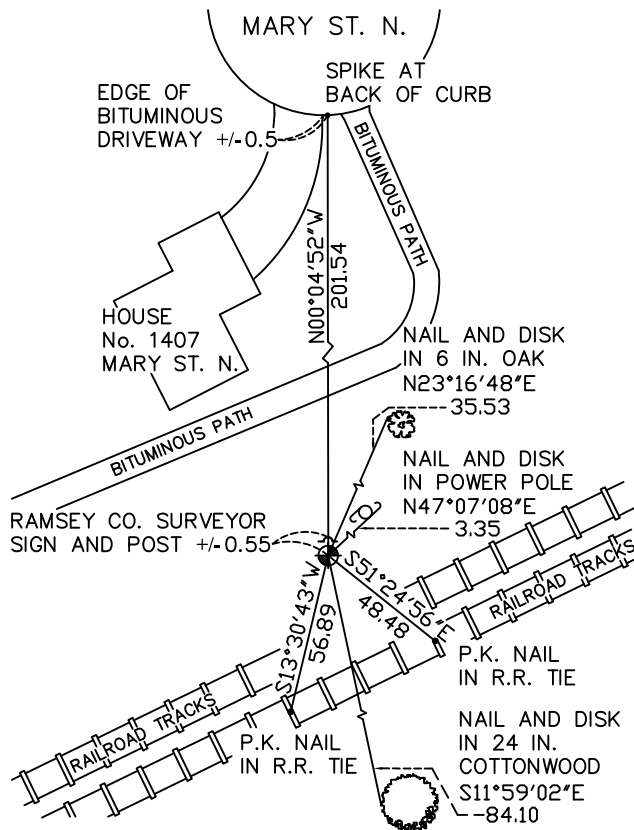
At the corner location shown on the sketch

On August 16, 2010 found a cast iron monument, flush.

left monument as found lowered monument removed monument (explain)

On _____ placed a _____

SKETCH OF REFERENCE TIES



RAMSEY COUNTY
NAD83 (1986)
MONUMENT 485S

X= 600515.228 (Easting)
Y= 170733.179 (Northing)

ALL DISTANCES ARE SHOWN IN U.S. SURVEY FEET.
BEARINGS ARE FOR TIE REFERENCE PURPOSES ONLY.

Statements of evidence relative to this corner are on the following page(s).

I hereby certify that this document and the data contained herein was prepared by me or under my direct supervision this _____ day of _____, 20____.

SIGNATURE

Minnesota License No. _____

- County Surveyor
 Deputy County Surveyor Land Surveyor

OFFICE OF COUNTY SURVEYOR
County of Ramsey

I hereby certify that this document was filed in the County Surveyor's office on the _____ day of _____, 20____.

SIGNATURE

Michael D. Fiebiger, P.L.S.
Ramsey County Surveyor

MONUMENT 485S

Found a granite monument, no date given in field book.

Granite monument destroyed by grading. Located a point on the north-south quarter line and set a 20 in. cast iron monument. Monument set 162.00 ft. south of center of section. Sign and post set +/-0.5 ft. northwest of monument, May 5, 1997.

Tied monument, August 16, 2010.