

MONUMENT 481

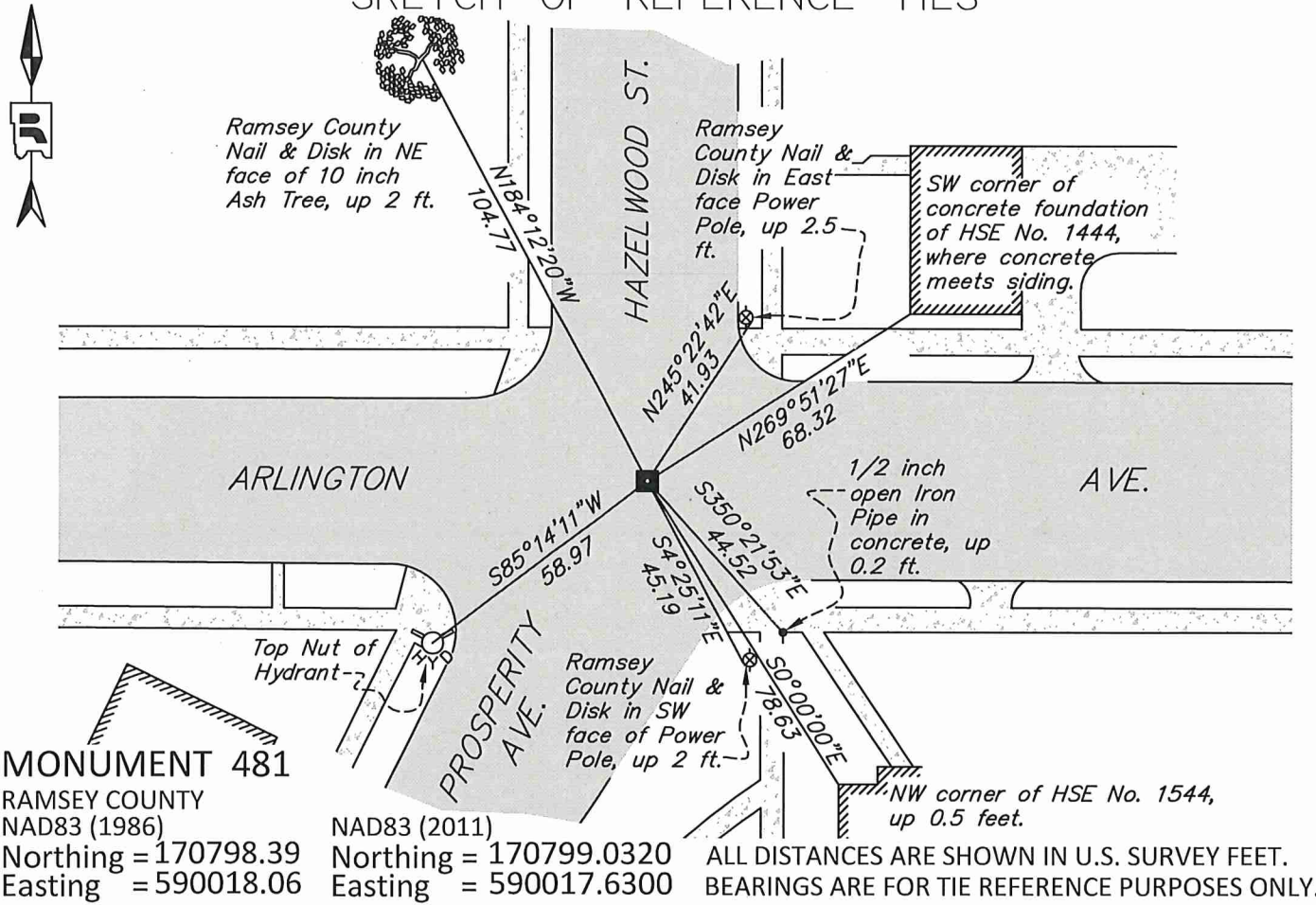
CERTIFICATE OF LOCATION OF GOVERNMENT CORNER

Center of Section 22, Township 29 North, Range 22 West, County of Ramsey, State of Minnesota.

At the corner location shown on the sketch

- On June 22, 2018 Found a broken Granite monument with a 3/4 inch rebar in the center of it
during road milling.
- left monument as found
 raised/lowered monument
 removed monument (explain)
- On June 25, 2018 Cut 3/4 inch rebar flush with top of broken granite; cast iron manhole
placed over granite by others.

SKETCH OF REFERENCE TIES



Statements of evidence relative to this corner are on the following page.

I hereby certify that this survey, plan, or report was prepared by me or under my direct supervision, that I am a duly Licensed Land Surveyor under the laws of the state of Minnesota, and that this certificate is correct and complete to the best of my knowledge and belief.

Daniel D. Baar 9-8-20
 Daniel D. Baar Date
 Deputy County Surveyor
 Minnesota License No. 45816

OFFICE OF COUNTY SURVEYOR
 County of Ramsey

I hereby certify that this document was filed in the County Surveyor's office this 8th day of September, 2020.

Daniel D. Baar
 Daniel D. Baar, L.S.
 Ramsey County Surveyor

MONUMENT 481

X

Center of Section 22, Township 29, Range 22

| | |
|--------------------|---|
| March 27, 1890 | Monument set by J H Armstrong. City of St. Paul Surveyor's Office |
| August, 1951 | Placed ties. City of St. Paul Surveyor's Office |
| May 2, 1972 | Set Cast Iron Monument Cap over Granite Monument to bring to grade. Cast Iron Monument is set in concrete. City of St. Paul Surveyor's Office |
| February, 1987 | Found Iron Pin at Grade. Building ties and P.P. tie fall on N.E. corner of Pin. City of St. Paul Surveyor's Office |
| January, 1990 | Iron pin at grade. City of St. Paul Surveyor's Office |
| January 29, 1990 | Ties checked and corrected. City of St. Paul Surveyor's Office |
| July 31, 1991 | Recovered 3/4 inch rebar at pavement grade. City of St. Paul Surveyor's Office |
| October 22, 1992 | Found Granite Monument with Steel Pin in it. Moved Steel Pin to proper position, sealed with concrete. City of St. Paul Surveyor's Office |
| September 26, 1995 | Found and Painted Steel Pin at Grade. City of St. Paul Surveyor's Office |
| March 22, 1996 | Found and Painted Iron Pin at Grade. City of St. Paul Surveyor's Office |
| March 17, 2000 | Found Steel Pin at grade. City of St. Paul Surveyor's Office |
| January 2, 2002 | Monument 039 Steel pin is at asphalt grade. City of St. Paul Surveyor's Office |
| October 31, 2012 | Found Iron Pin at street grade. City of St. Paul Surveyor's Office |
| June 4, 2018 | Found Iron Pin at bituminous grade. Measured local ties using Certificate of Location dated October 23, 1992 (three existing and three new ties). Set two offsets consisting of 5/8 inch x 14 inch rebar with traverse point cap in preparation for road construction, measured offsets. Ramsey County Surveyor's Office |
| June 22, 2018 | Milling exposed top of broken Granite Monument with 3/4 inch rebar in center. G.M. +/- 0.5 feet below finished grade. Ramsey County Surveyor's Office |
| June 25, 2018 | Cut rebar flush with top of broken Granite Monument. Measured existing ties to center and retied monument. Ramsey County Surveyor's Office |
| July 2, 2018 | Following the placement of cast iron manhole by others, the top 0.4 feet of Granite Monument cracked into multiple loose pieces around 3/4 inch rebar center piece. Remeasured offsets and ties, rebar appears to be unaffected by cracking, and securely set in G.M., as no new movement was measured. Ramsey County Surveyor's Office |