

MONUMENT 48

CERTIFICATE OF LOCATION OF GOVERNMENT CORNER

West Quarter Corner of Section 1, Township 30 North, Range 22
West, County of Ramsey, State of Minnesota.

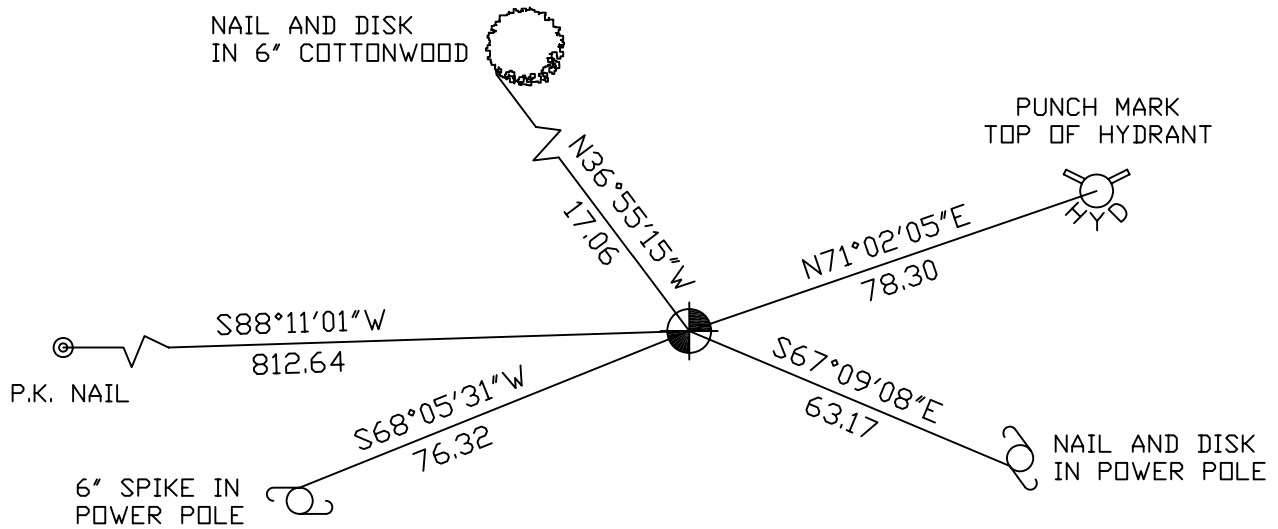
At the corner location shown on the sketch

On November 1, 2004 found a cast iron monument.

left monument as found, lowered monument, removed monument (explain)

On _____ placed a _____

SKETCH OF REFERENCE TIES



RAMSEY COUNTY
NAD83 (1986) DATUM
MONUMENT 48

X=597682.690 (Easting)
Y=218596.307 (Northing)

ALL DISTANCES ARE SHOWN IN U.S. SURVEY FEET.
BEARINGS ARE FOR TIE REFERENCE PURPOSES ONLY.

Statements of evidence relative to this corner are on the following page(s).

I hereby certify that this document and the data contained herein was prepared by me or under my direct supervision this _____ day of _____, 20____.

SIGNATURE

Minnesota License No. _____

- Land Surveyor Professional Engineer
 County Surveyor County Engineer

OFFICE OF COUNTY SURVEYOR

County of Ramsey

I hereby certify that this document was filed in the County Surveyor's office on the _____ day of _____, 20____.

David D. Claypool, P.L.S., County Surveyor

By _____, Deputy

MONUMENT 48

Found cast iron monument and retied in May, 1974.

Checked monument, July 19, 1990.

Placed guard post and sign, July 24, 1990.

Responded to surveyor, short cast iron monument gone and top of old cast iron missing; tied out what was left of monument (down 0.8 ft.). Park is under construction, July 22, 1999.

Set a 20 in. cast iron monument down 4 in., on top of broken off cast iron. Placed sign and post 10 in. north of monument and retied, October 22, 1999.

Retied monument, November 1, 2004.