

# MONUMENT 466

## CERTIFICATE OF LOCATION OF GOVERNMENT CORNER

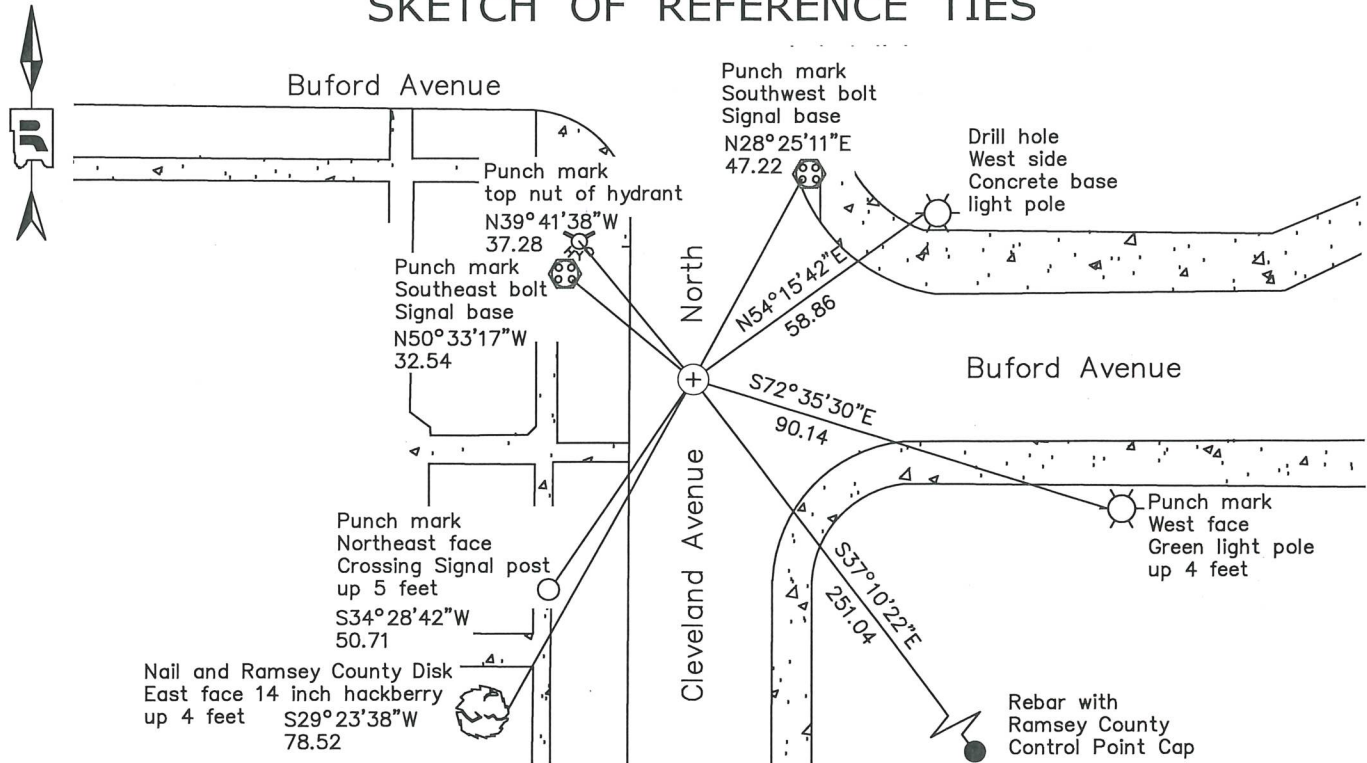
West Quarter Corner of Section 21, Township 29 North, Range 23 West, County of Ramsey, State of Minnesota.

At the corner location shown on the sketch

On August 2, 2022 found a granite monument with a drill hole.

On October 27, 2023 placed a 5/8 inch by 14 inch rebar with 3 inch aluminum cap  
stamped "Ramsey County Surveyor".

### SKETCH OF REFERENCE TIES



Monument 466		
Ramsey County		
NAD83 (1986)	NAD83 (2011)	
Northing = 170563.20	Northing = 170563.86	All distances are shown in U.S. Survey Feet.
Easting = 550746.26	Easting = 550745.87	Bearings are for tie reference purposes only.

Statements of evidence relative to this corner are on the following page.

I hereby certify that this survey, plan, or report was prepared by me or under my direct supervision, that I am a duly Licensed Land Surveyor under the laws of the state of Minnesota, and that this certificate is correct and complete to the best of my knowledge and belief.

*Devin R. Ball* 5/3/24

Devin R. Ball Date  
 Deputy County Surveyor  
 Minnesota License No. 56023

OFFICE OF COUNTY SURVEYOR  
 County of Ramsey

I hereby certify that this document was filed in the County Surveyor's office this 4<sup>th</sup> day of June, 20 24.

*Daniel D. Baar*

Daniel D. Baar  
 Ramsey County Surveyor  
 Minnesota License No. 45816

# MONUMENT 466

West Quarter Corner of Section 21, Township 29 North, Range 23 West

November 3, 1847	North between Sections 20 and 21. At 40.00 chains, set 1/4 Section post. Bur Oak 16 S52°E 46 Do 12 N23°W 78 Isaac N. Higbee, Deputy Surveyor
January, 1889	Granite monument set at 1/4 corner E line Section 20-29-23. R.J. Johnson
February 13, 1934	Tied monument. St. Paul Surveyor's Office
August 13, 1973	Cast iron cap set to grade. St. Paul Surveyor's Office
1982	Found CIM with cap missing. St. Paul Surveyor's Office
January, 1985	Found CIM with cap missing. St. Paul Surveyor's Office
February, 1987	Found PK at grade and checked ties. St. Paul Surveyor's Office
September 21, 1995	Found small PK nail. St. Paul Surveyor's Office
March 21, 1996	Found PK nail at grade. St. Paul Surveyor's Office
June 16, 1997	Found granite monument 0.15 feet below grade and place ties. St. Paul Surveyor's Office
July 24, 1997	Checked ties. St. Paul Surveyor's Office
March 17, 2000	Found granite monument 0.20 feet below grade. St. Paul Surveyor's Office
August 2, 2022	Found a granite monument with drill hole. Established offsets and checked local ties prior to removal during road construction. Ramsey County Surveyor's Office
October 27, 2023	Placed a 5/8 inch by 14 inch rebar with 3 inch aluminum cap stamped "Ramsey County Surveyor" following road construction using offsets. Recorded local ties. Ramsey County Surveyor's Office